



PRICED AT
\$637,900

 2552 Sq Ft

 4 Beds

 3.5 Baths

 2 Car Garage

 3.0 Story

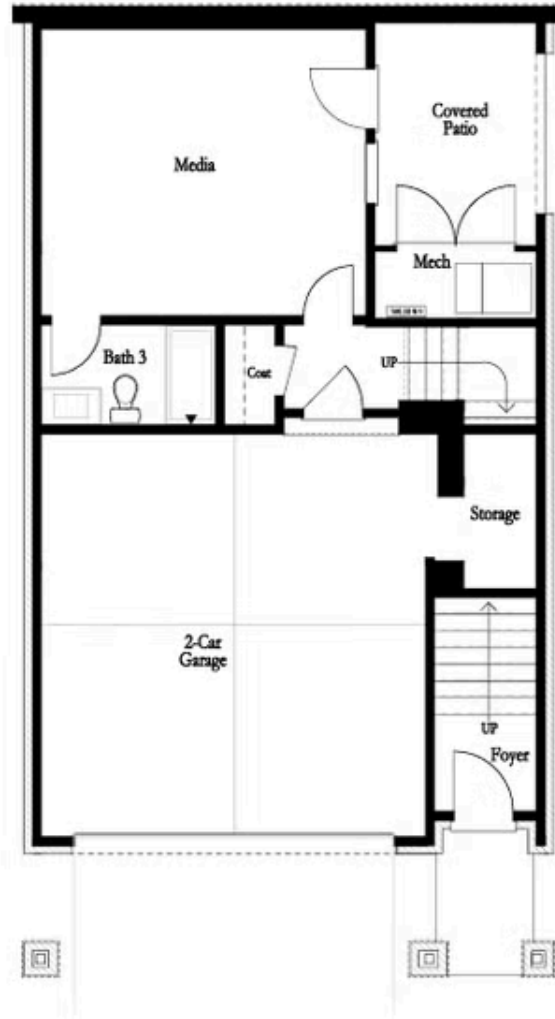
Discover the The Aspen by The Providence Group. Step into a lifestyle of elegance, comfort, and convenience at Palisades—an exclusive community known for its peaceful charm and impressive views. Presenting a beautifully designed, three-story new construction home featuring 4 bedrooms and 3.5 bathrooms, ideal for those who desire thoughtful design and plenty of room to live, entertain, and unwind. The terrace level offers a secluded guest suite complete with a full bath, a private covered patio, and a fenced courtyard—perfect for visiting family, long-term guests, or creating a quiet home office or studio space. It’s a welcoming and functional extension of the home with its own sense of retreat. Light-Filled Living, Crafted for Comfort The main level embraces open-concept living, with oversized windows that let natural light pour in, creating an airy and inviting atmosphere. The spacious family room flows effortlessly to a classic Charleston-inspired front porch, ideal for evening conversations or morning relaxation. In the center of this level, a chef-style kitchen takes center stage with 42” soft-close cabinets, quartz countertops, under-cabinet lighting, and premium stainless steel appliances. The adjacent dining space opens to a covered back deck—perfect for outdoor meals or a quiet evening overlooking the landscaped backyard. ...

**Want to Know More
About This Home?**

CONTACT OUR COMMUNITY SALES MANAGER

NONE

Call Us @ 470.456.9551



BASEMENT

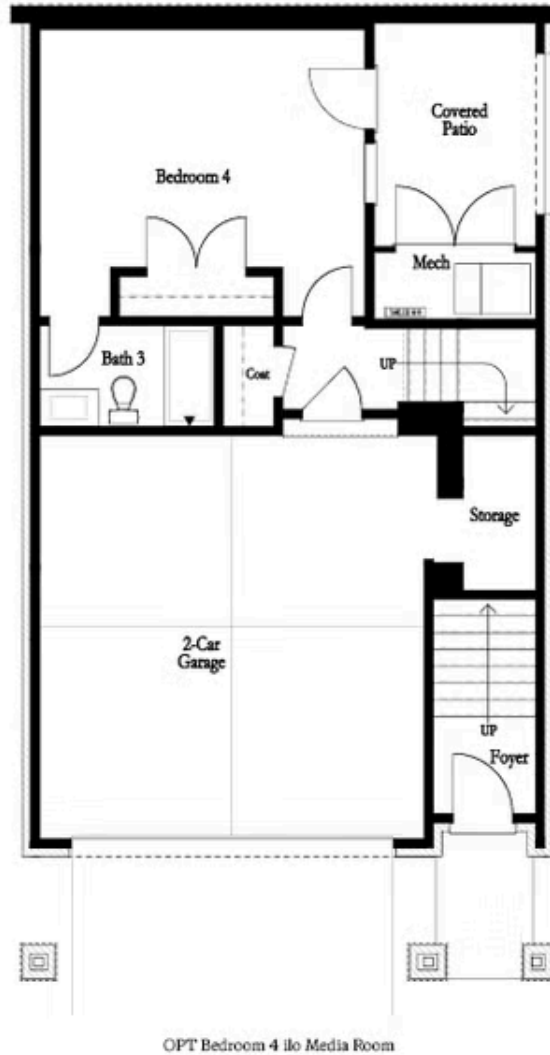
Elevation G & H

Want to Know More
About This Home?

CONTACT OUR COMMUNITY SALES MANAGER

NONE

Call Us @ 470.456.9551



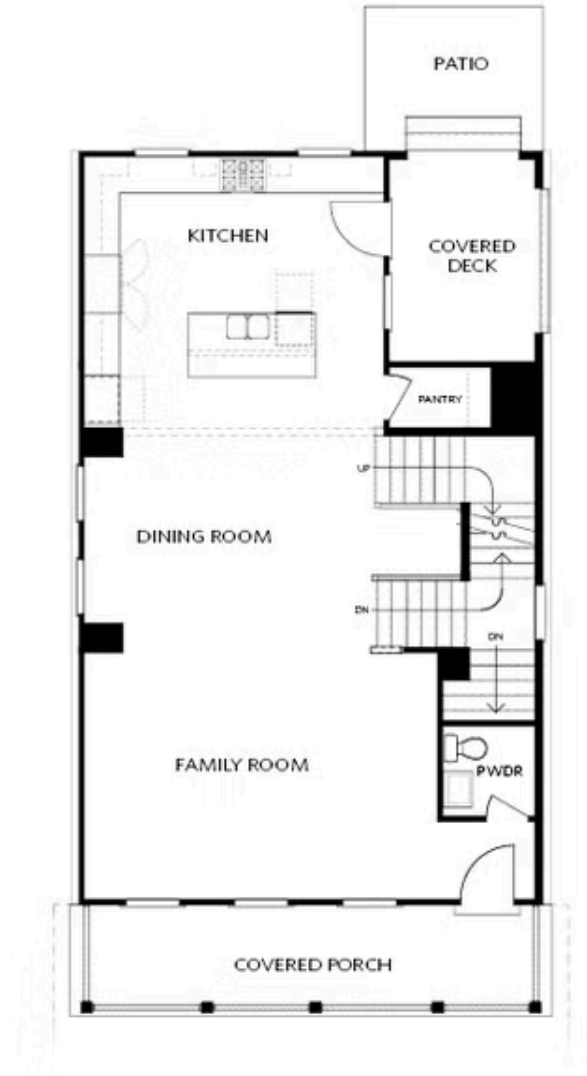
OPTIONAL BASEMENT

Want to Know More
About This Home?

CONTACT OUR COMMUNITY SALES MANAGER

NONE

Call Us @ 470.456.9551



FIRST FLOOR
KITCHEN REAR

Elevation G & H

Want to Know More
About This Home?

CONTACT OUR COMMUNITY SALES MANAGER

NONE

Call Us @ 470.456.9551



FIRST FLOOR
KITCHEN MIDDLE

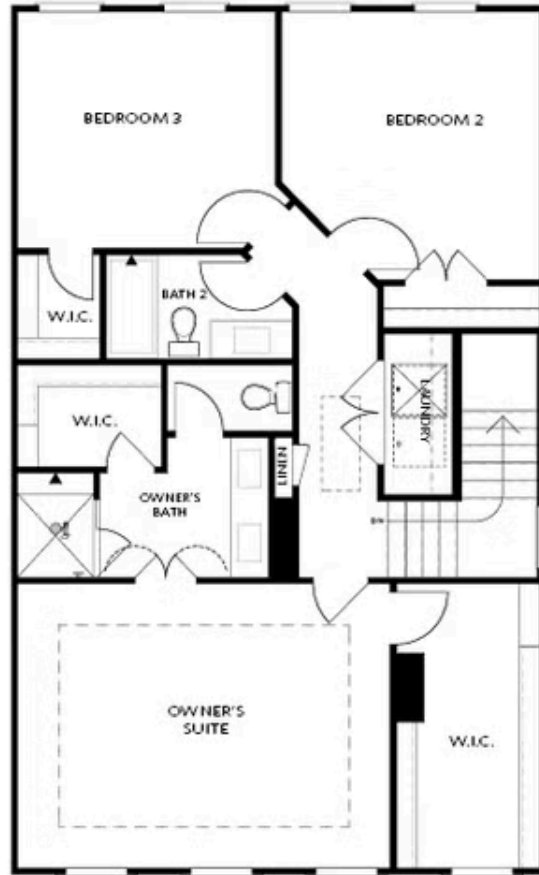
Elevation G & H

Want to Know More
About This Home?

CONTACT OUR COMMUNITY SALES MANAGER

NONE

Call Us @ 470.456.9551



SECOND FLOOR

Elevation G & H

Want to Know More
About This Home?

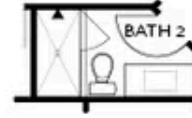
CONTACT OUR COMMUNITY SALES MANAGER

NONE

Call Us @ 470.456.9551



OPT Shower on Terrace Bath 3



OPT Shower Second Floor Bath 2



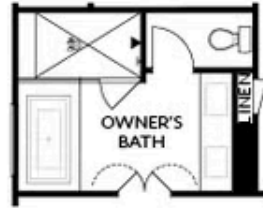
OPT Walk-In Shower



OPT linear Fireplace



OPT Fireplace



OPT Tub/Shower Combo

OPTIONS

Want to Know More
 About This Home?

CONTACT OUR COMMUNITY SALES MANAGER

NONE

Call Us @ 470.456.9551