



PRICED AT  
**\$711,785**

 2552 Sq Ft

 4 Beds

 3.5 Baths

 2 Car Garage

 3.0 Story

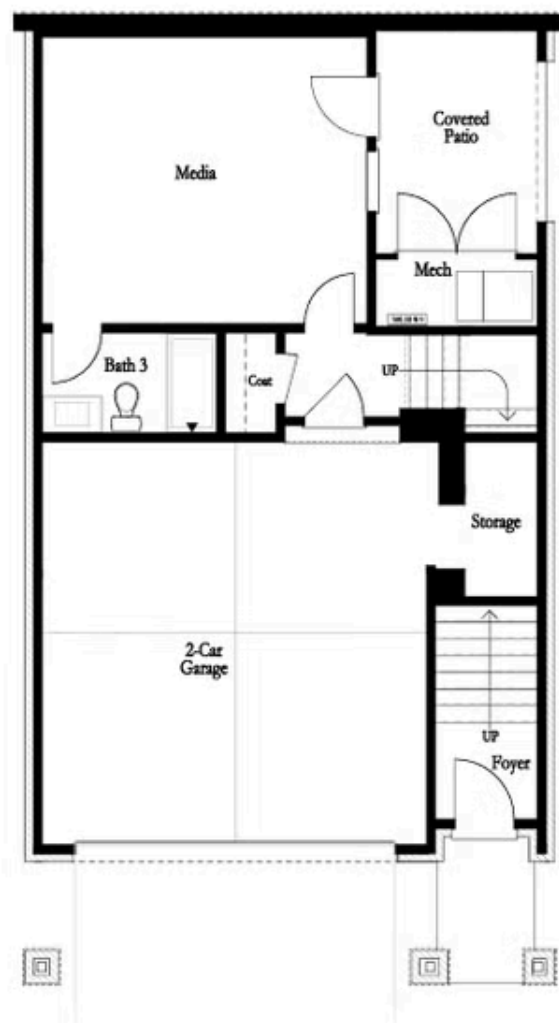
Discover The Aspen II at Palisades—a premier mountaintop enclave where upscale design meets breathtaking views and peaceful living. This brand-new, three-story, 4-bedroom, 3.5-bath home offers an exceptional blend of modern elegance and mountain serenity, perfectly tailored for those seeking space, style, and a scenic escape. Perched above the town of Cumming, this home is thoughtfully designed to maximize its sweeping vistas of Sawnee Mountain and beyond. The terrace level includes a private guest suite with a full bath, its own covered patio, and access to a fenced courtyard—ideal for visitors or multigenerational living, with privacy and comfort in mind. On the main floor, expansive windows flood the open-concept layout with natural light. The family room extends to a charming Charleston-style front porch, offering a seamless indoor-outdoor experience. At the rear, the chef-inspired kitchen features 42" soft-close cabinets, quartz countertops, stainless steel appliances, a cooktop with a wall oven and microwave, and under-cabinet lighting. The adjacent dining area flows effortlessly onto a covered deck that overlooks a beautifully landscaped backyard—perfect for alfresco meals and quiet mornings. Upstairs, the owner's suite is a tranquil haven with panoramic mountain views framed by oversized picture windows. This floor also includes two additional bedrooms and ...

**Want to Know More  
About This Home?**

CONTACT OUR COMMUNITY SALES MANAGER

**NONE**

Call Us @ 470.456.9551

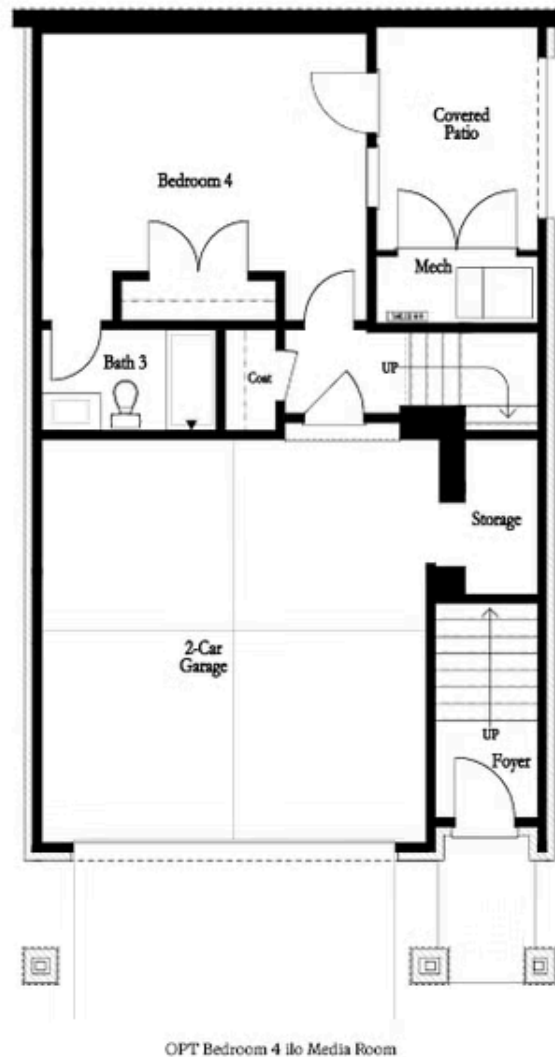


BASEMENT

Elevation G & H

Want to Know More  
About This Home?

CONTACT OUR COMMUNITY SALES MANAGER  
**NONE**  
Call Us @ 470.456.9551



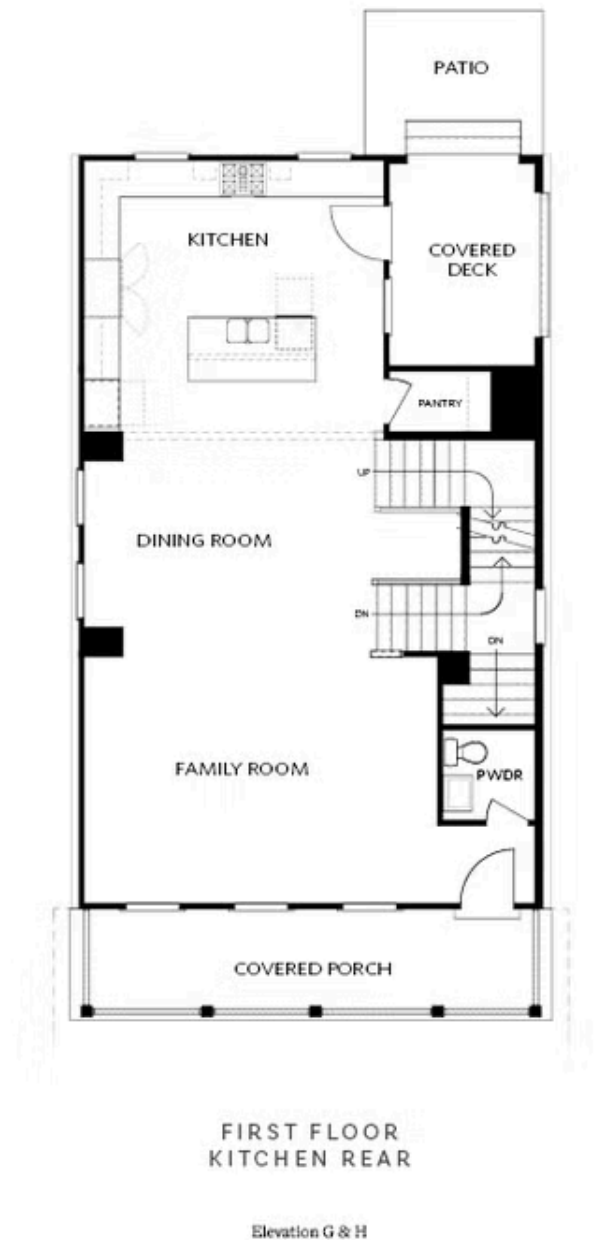
OPTIONAL BASEMENT

Want to Know More  
About This Home?

CONTACT OUR COMMUNITY SALES MANAGER

NONE

Call Us @ 470.456.9551



Want to Know More  
About This Home?

CONTACT OUR COMMUNITY SALES MANAGER  
**NONE**  
Call Us @ 470.456.9551



FIRST FLOOR  
KITCHEN MIDDLE

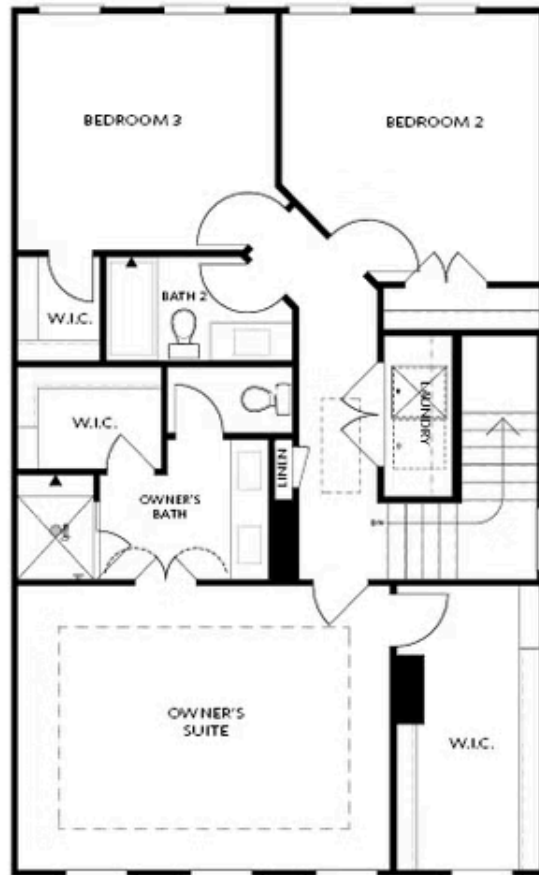
Elevation G & H

Want to Know More  
About This Home?

CONTACT OUR COMMUNITY SALES MANAGER

NONE

Call Us @ 470.456.9551



SECOND FLOOR

Elevation G & H

Want to Know More  
About This Home?

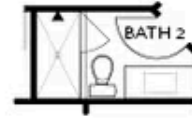
CONTACT OUR COMMUNITY SALES MANAGER

NONE

Call Us @ 470.456.9551



OPT Shower on Terrace Bath 3



OPT Shower Second Floor Bath 2



OPT Walk-In Shower



OPT Tub/Shower Combo



OPT linear Fireplace



OPT Fireplace

## OPTIONS

Want to Know More  
About This Home?

CONTACT OUR COMMUNITY SALES MANAGER

NONE

Call Us @ 470.456.9551