



PRICED AT
\$724,745

 2552 Sq Ft

 4 Beds

 3.5 Baths

 2 Car Garage

 3.0 Story

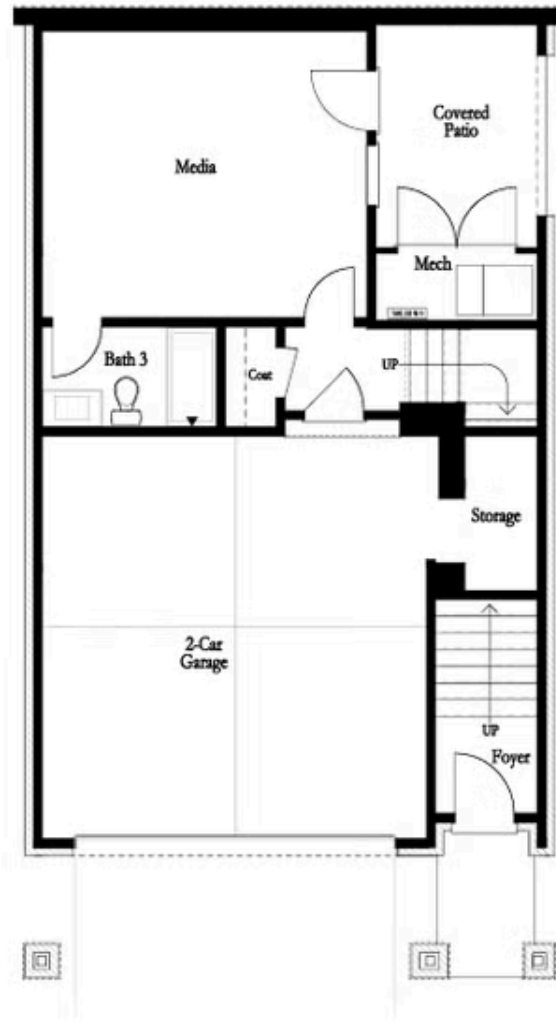
Pick Your Promotion with \$15,000 – Choose the path to homeownership that fits your life – low rates, upgrades, appliances, closing costs & more. Receive a Discover The Aspen II at Palisades—a premier enclave where upscale design meets breathtaking views and peaceful living. This brand-new, three-story, 4-bedroom, 3.5-bath home offers an exceptional blend of modern elegance and tranquil surroundings, perfectly suited for those seeking space, style, and a scenic escape. Thoughtfully designed to showcase sweeping vistas of the natural landscape, this home provides a stunning visual experience from multiple vantage points. The terrace level includes a private guest suite with a full bath, its own covered patio, and access to a fenced courtyard, offering both privacy and comfort. On the main floor, expansive windows flood the open-concept layout with natural light. The family room opens to a charming Charleston-style front porch, creating a seamless indoor-outdoor connection. At the rear, the chef-inspired kitchen features 42" soft-close cabinets, quartz countertops, stainless steel appliances, a cooktop with a wall oven and microwave, and under-cabinet lighting. The adjacent dining area flows effortlessly onto a covered deck that overlooks a beautifully landscaped backyard—perfect for alfresco meals and quiet mornings. Upstairs, the owner's suite is a ...

**Want to Know More
About This Home?**

CONTACT OUR COMMUNITY SALES MANAGER

NONE

Call Us @ 470.456.9551



BASEMENT

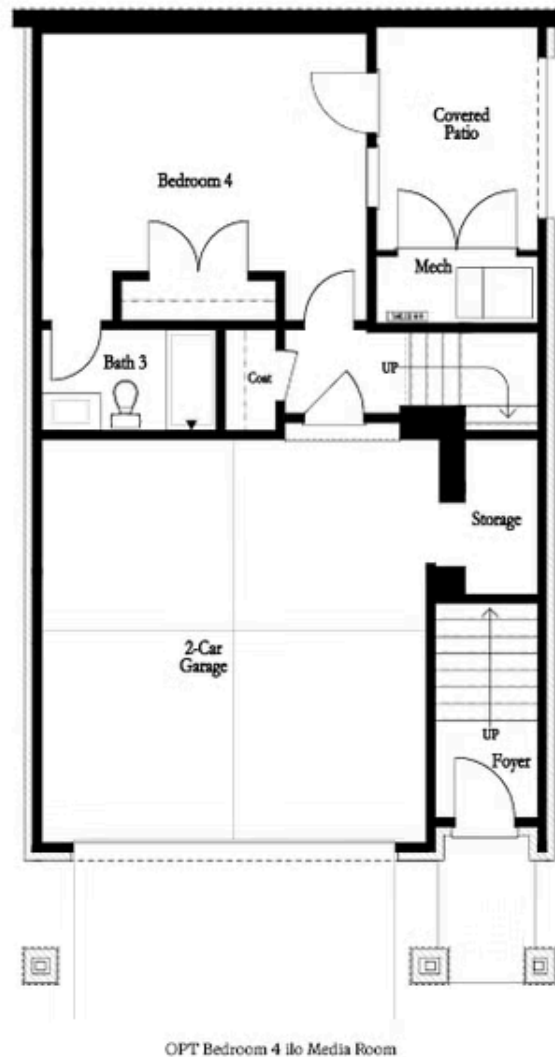
Elevation G & H

Want to Know More
About This Home?

CONTACT OUR COMMUNITY SALES MANAGER

NONE

Call Us @ 470.456.9551



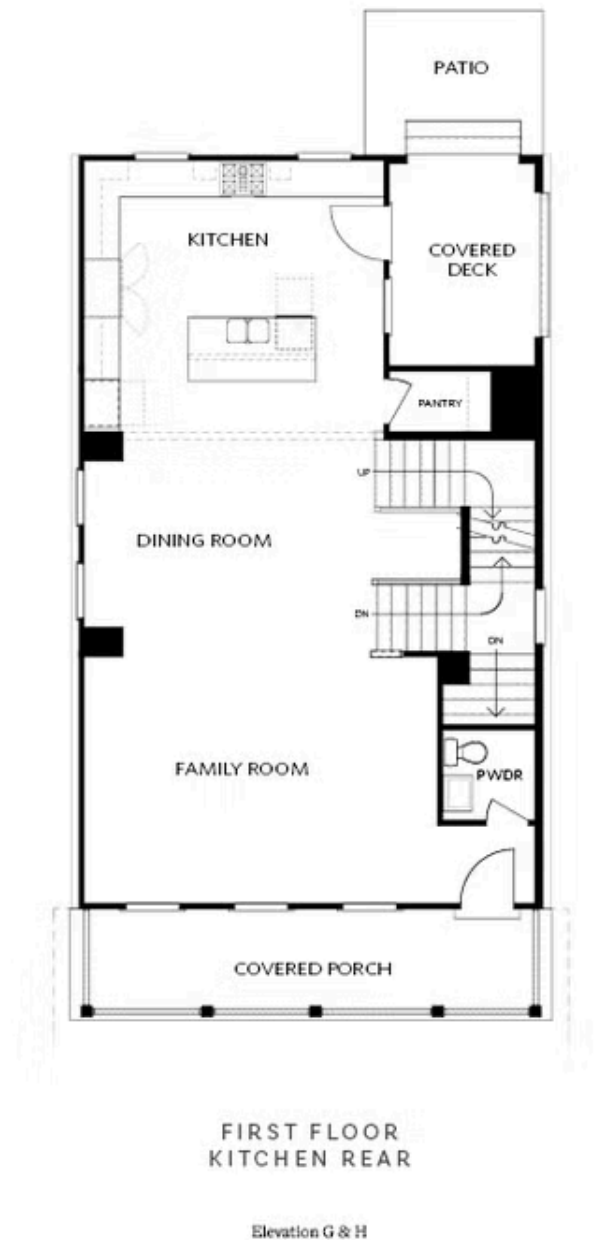
OPTIONAL BASEMENT

Want to Know More
About This Home?

CONTACT OUR COMMUNITY SALES MANAGER

NONE

Call Us @ 470.456.9551



Want to Know More
About This Home?

CONTACT OUR COMMUNITY SALES MANAGER
NONE
Call Us @ 470.456.9551



FIRST FLOOR
KITCHEN MIDDLE

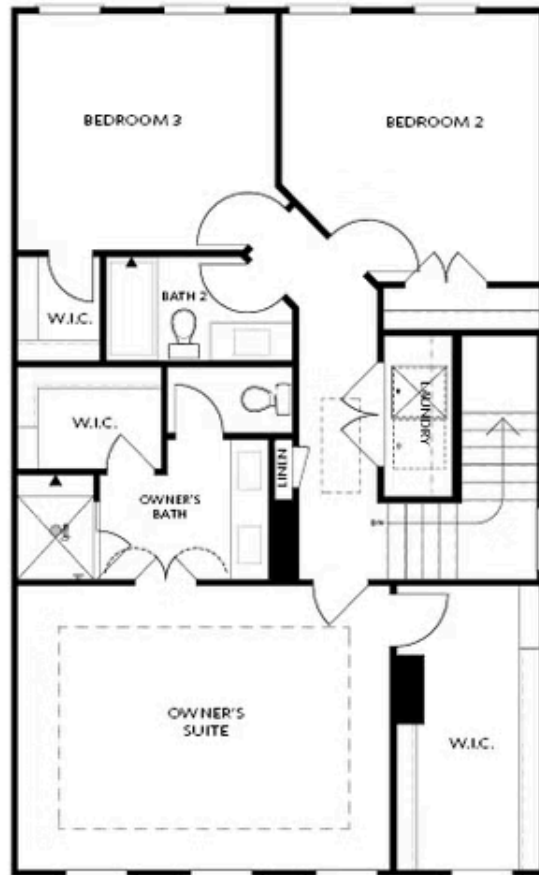
Elevation G & H

Want to Know More
About This Home?

CONTACT OUR COMMUNITY SALES MANAGER

NONE

Call Us @ 470.456.9551



SECOND FLOOR

Elevation G & H

Want to Know More
About This Home?

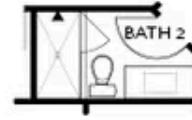
CONTACT OUR COMMUNITY SALES MANAGER

NONE

Call Us @ 470.456.9551



OPT Shower on Terrace Bath 3



OPT Shower Second Floor Bath 2



OPT Walk-In Shower



OPT Tub/Shower Combo



OPT linear Fireplace



OPT Fireplace

OPTIONS

Want to Know More
About This Home?

CONTACT OUR COMMUNITY SALES MANAGER

NONE

Call Us @ 470.456.9551