








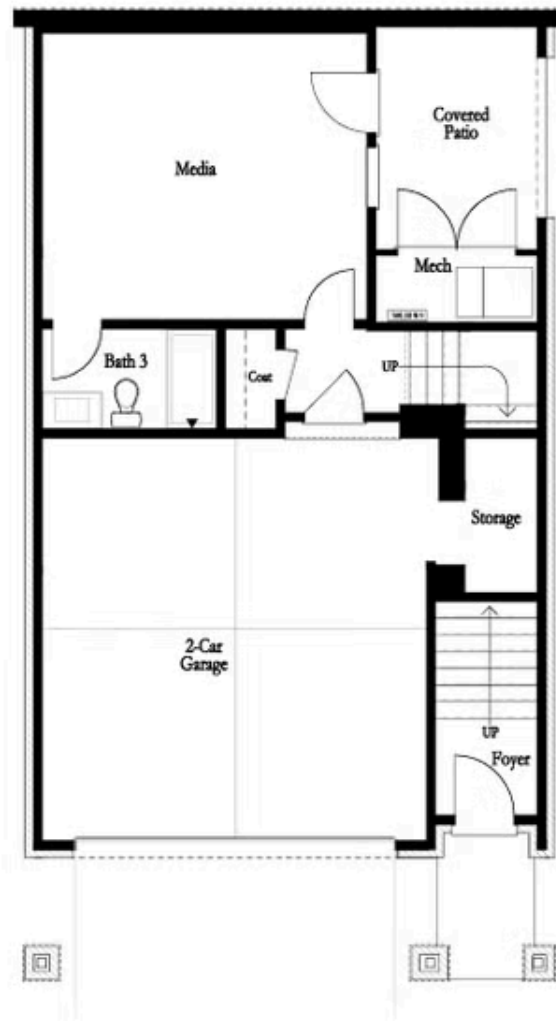
PRICED AT  
**\$659,725**

-  2552 Sq Ft
-  4 Beds
-  3.5 Baths
-  2 Car Garage
-  3.0 Story

Black Friday Special THIS WEEKEND ONLY!! Receive an additional \$7,500 in Closing Costs with a TPG preferred Lender and Loan officer on contracts written November 29th, 30th, and close by December 31st, 2025. Season of Savings- Build your Savings and Unwrap the Joy of a New Home with \$65,000 Promotion! Promotions has been applied towards a price reduction. Ends November 30, 2025. Discover the The Aspen II by The Providence Group. This home is MOVE IN READY. A premier enclave where upscale design meets breathtaking views and peaceful living. This brand-new, three-story, 4-bedroom, 3.5-bath home offers an exceptional blend of modern elegance and tranquil surroundings, perfectly suited for those seeking space, style, and a scenic escape. Thoughtfully designed to showcase sweeping vistas of the natural landscape, this home provides a stunning visual experience from multiple vantage points. The terrace level includes a private guest suite with a full bath, its own covered patio, and access to a fenced courtyard, offering both privacy and comfort. On the main floor, expansive windows flood the open-concept layout with natural light. The family room opens to a charming Charleston-style front porch, creating a seamless indoor-outdoor connection. At the rear, the chef-inspired kitchen features 42" ...

Want to Know More  
About This Home?

CONTACT OUR COMMUNITY SALES MANAGER  
**NONE**  
Call Us @ 470.456.9551



BASEMENT

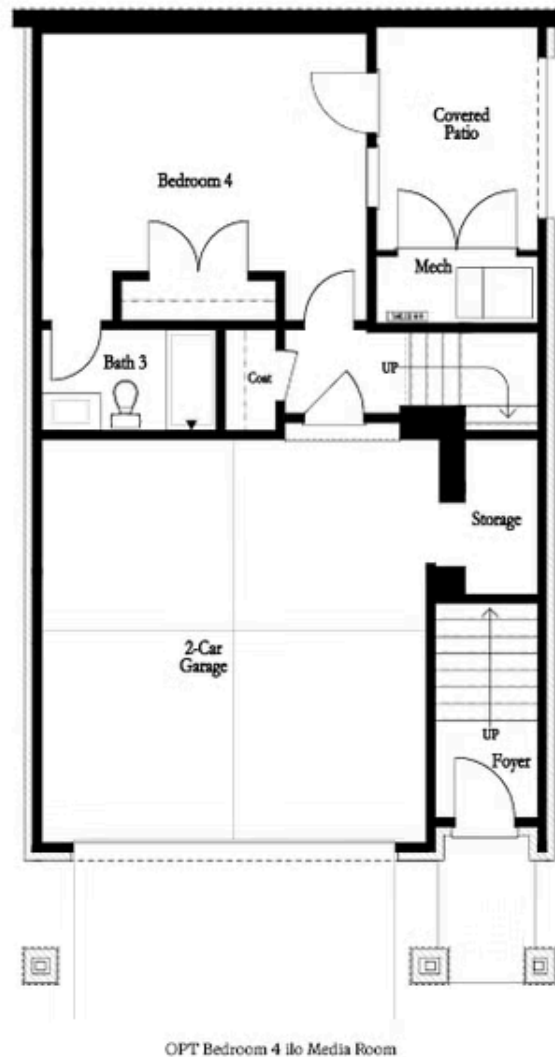
Elevation G & H

Want to Know More  
About This Home?

CONTACT OUR COMMUNITY SALES MANAGER

NONE

Call Us @ 470.456.9551



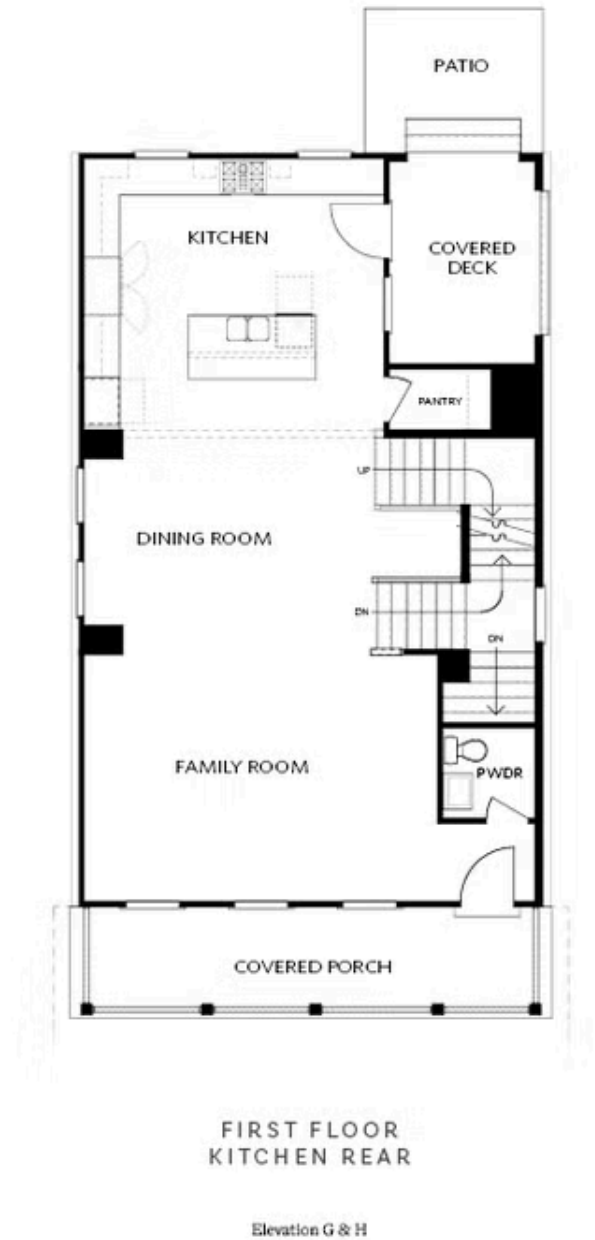
OPTIONAL BASEMENT

Want to Know More  
About This Home?

CONTACT OUR COMMUNITY SALES MANAGER

NONE

Call Us @ 470.456.9551



Want to Know More  
About This Home?

CONTACT OUR COMMUNITY SALES MANAGER  
**NONE**  
Call Us @ 470.456.9551



FIRST FLOOR  
KITCHEN MIDDLE

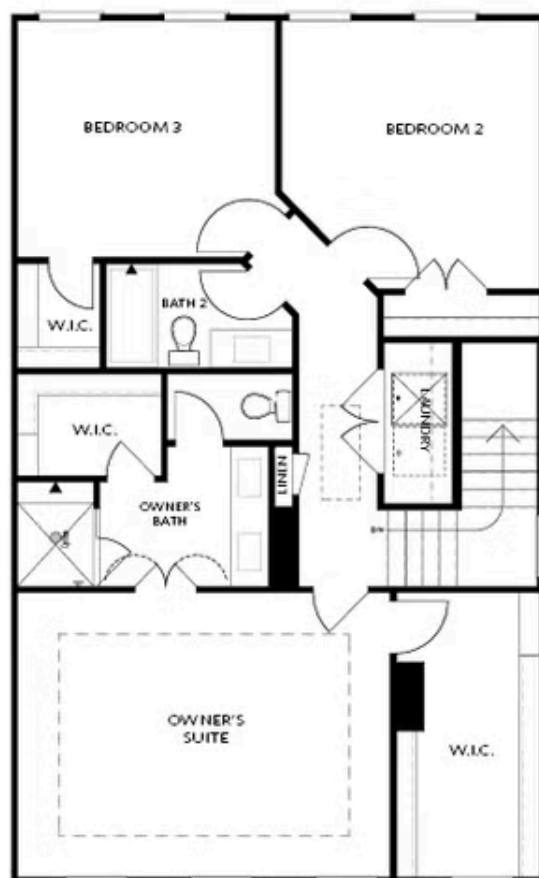
Elevation G & H

Want to Know More  
About This Home?

CONTACT OUR COMMUNITY SALES MANAGER

NONE

Call Us @ 470.456.9551



SECOND FLOOR

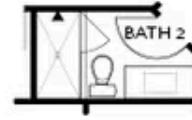
Elevation G & H

Want to Know More  
About This Home?

CONTACT OUR COMMUNITY SALES MANAGER  
**NONE**  
Call Us @ 470.456.9551



OPT Shower on Terrace Bath 3



OPT Shower Second Floor Bath 2



OPT Walk-In Shower



OPT Tub/Shower Combo



OPT linear Fireplace



OPT Fireplace

## OPTIONS

Want to Know More  
About This Home?

CONTACT OUR COMMUNITY SALES MANAGER

NONE

Call Us @ 470.456.9551