



PRICED AT  
**\$629,900**

 2552 Sq Ft

 4 Beds

 3.5 Baths

 2 Car Garage

 3.0 Story

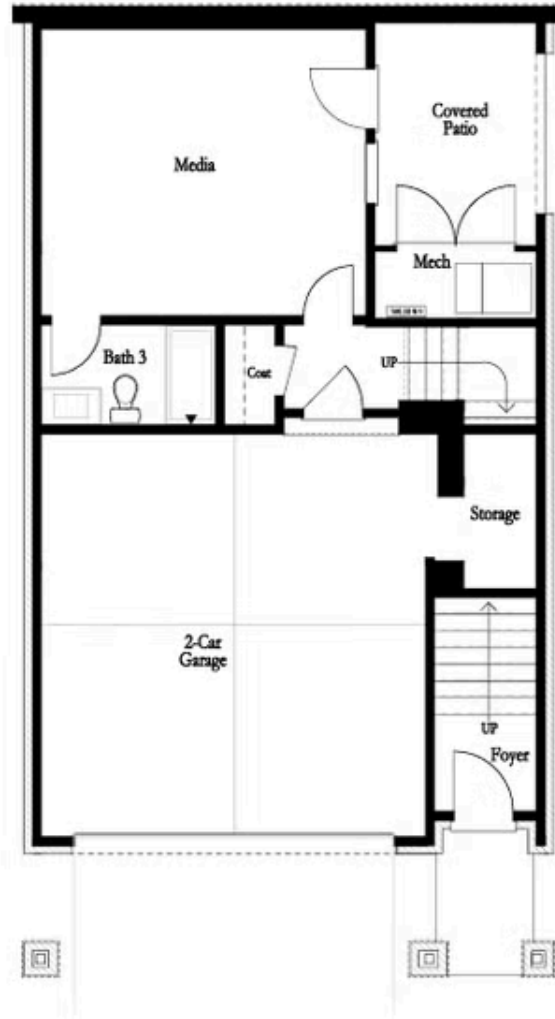
HOME OF THE MONTH - Elevate Your Savings at Palisades with Preferred Lender for the month of June! Discover the The Aspen by The Providence Group! Quick Move In Welcome to the Aspen Floor Plan. Pull into your 2 car garage with additional under stair storage. Terrace Level Bedroom with Full Bathroom with walk in shower. Oversized Guest Room includes walk out access to your private covered patio & side yard access. Fantastic option for office, gym, or playroom! Wrapped stairs lead you to an open-concept layout with soaring 10-foot ceilings on the main level, creating a light-filled, spacious atmosphere. Breathtaking West Views of the Sawnee Mountain Range is visible from your front porch directly off the living room. Entertain with ease as guest hang out on the front porch with views to the living room featuring a fireplace with smart tube wiring for mounted TV. The Dining Room separates the open concept with the oversized kitchen in the rear of home overlooking your walk out backyard. The additional covered patio makes this the ultimate outdoors home! Professionally installed turf makes for low maintenance backyard living. Wrapped stairs lead you to the upper level featuring the Owners suite in the ...

**Want to Know More  
About This Home?**

CONTACT OUR COMMUNITY SALES MANAGER

**NONE**

Call Us @ 470.456.9551



BASEMENT

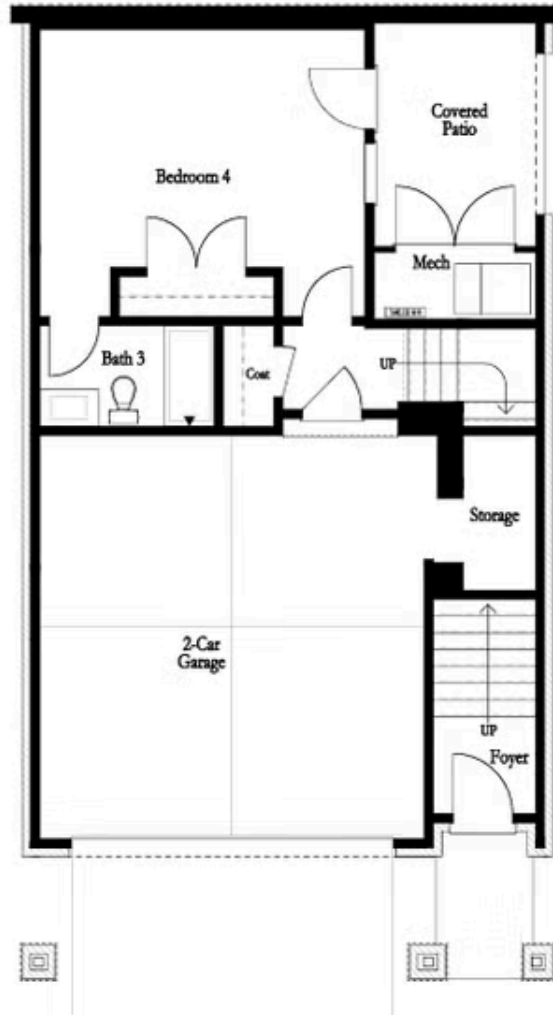
Elevation G & H

Want to Know More  
About This Home?

CONTACT OUR COMMUNITY SALES MANAGER

NONE

Call Us @ 470.456.9551



OPT Bedroom 4 ilo Media Room

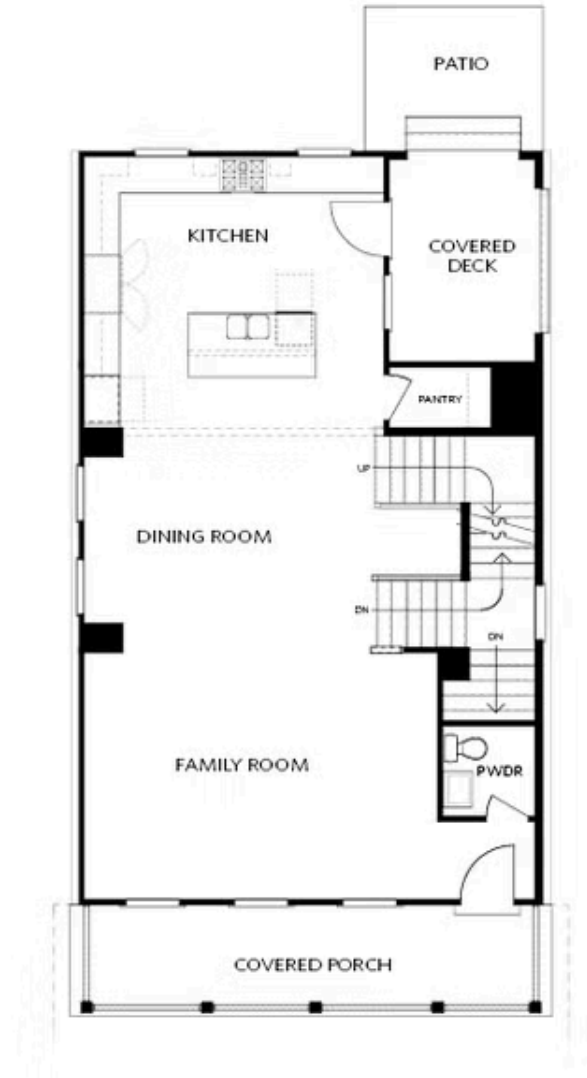
**OPTIONAL BASEMENT**

Want to Know More  
About This Home?

CONTACT OUR COMMUNITY SALES MANAGER

**NONE**

Call Us @ 470.456.9551



FIRST FLOOR  
KITCHEN REAR

Elevation G & H

Want to Know More  
About This Home?

CONTACT OUR COMMUNITY SALES MANAGER

NONE

Call Us @ 470.456.9551



FIRST FLOOR  
KITCHEN MIDDLE

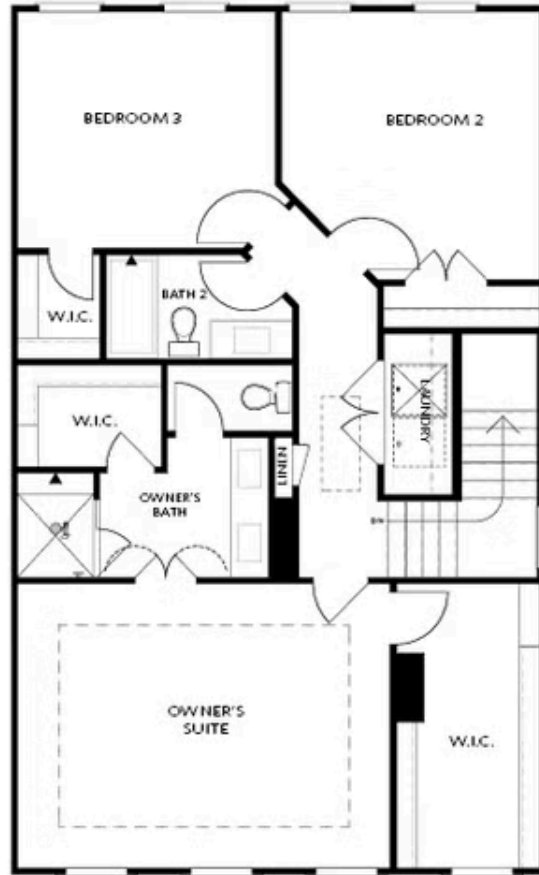
Elevation G & H

Want to Know More  
About This Home?

CONTACT OUR COMMUNITY SALES MANAGER

NONE

Call Us @ 470.456.9551



SECOND FLOOR

Elevation G & H

Want to Know More  
About This Home?

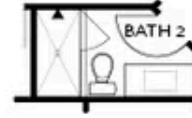
CONTACT OUR COMMUNITY SALES MANAGER

NONE

Call Us @ 470.456.9551



OPT Shower on Terrace Bath 3



OPT Shower Second Floor Bath 2



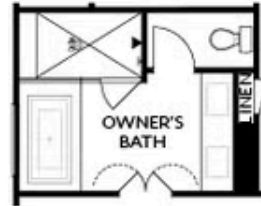
OPT Walk-In Shower



OPT linear Fireplace



OPT Fireplace



OPT Tub/Shower Combo

OPTIONS

Want to Know More  
 About This Home?

CONTACT OUR COMMUNITY SALES MANAGER

NONE

Call Us @ 470.456.9551