



PRICED FROM
\$674,900

 2,552 Sq Ft

 3 - 4 Beds

 3.5 Baths

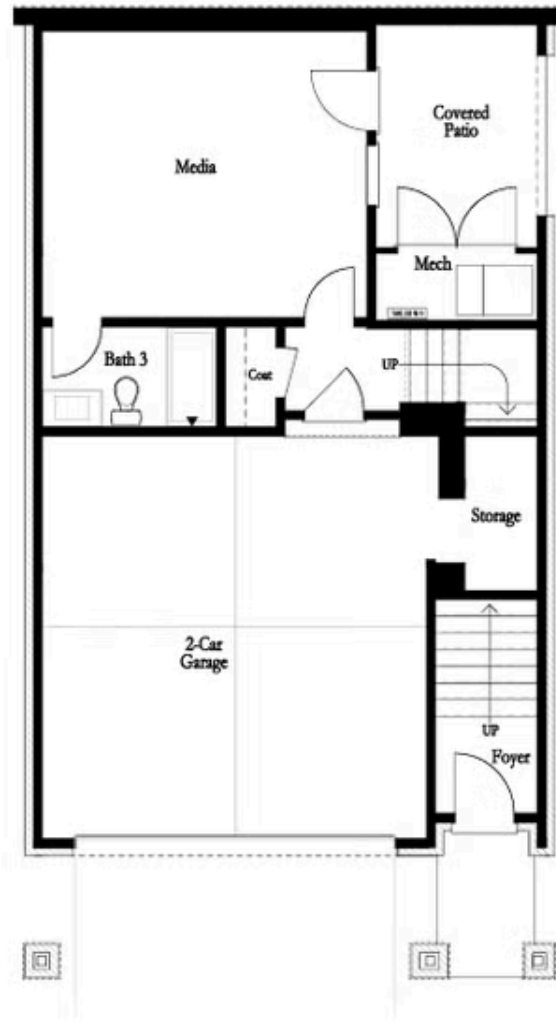
 2 Car Garage

 3.0 Story

- Media Room/Optional Bedroom with Private Access to a Covered Patio with Full Bathroom in the Basement
 - Front Covered Porch Expands the Entire Width of the House on the First Floor - Bringing Ample Natural Light into the Family Room
 - Optional Kitchen Location (Rear or Middle of the first floor)
 - Open Concept - Views from the Kitchen, Dining Room and Family Room
 - Large Covered Deck at the Rear of the First Floor
 - Spacious Owner's Suite Features a Massive Walk-In Closet with Double Doors Opening to a Large
- [Read More Online](#)

Available Elevations





BASEMENT

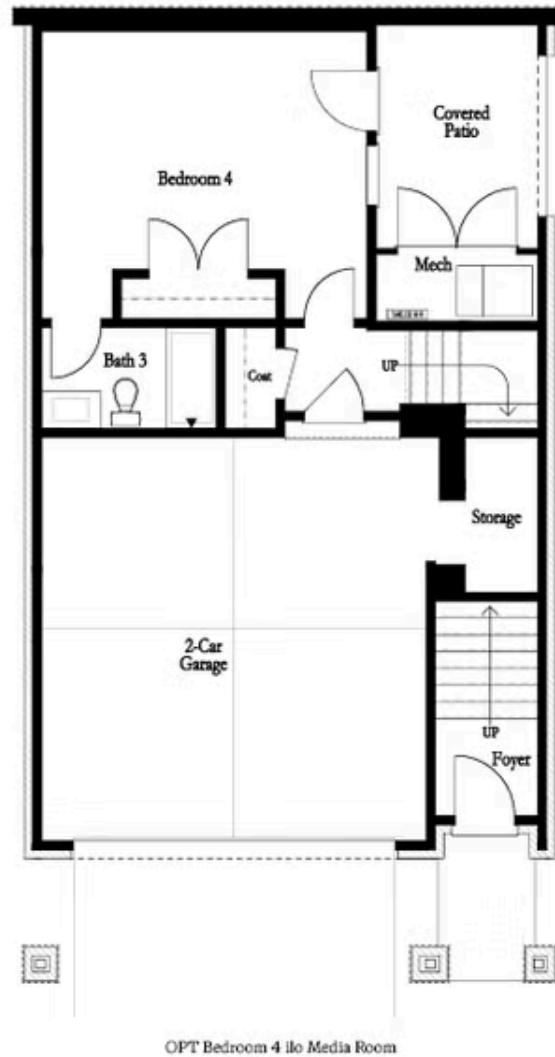
Elevation G & H

Want to Know More
About This Home?

CONTACT OUR COMMUNITY SALES MANAGER

NONE

Call Us @ 470.456.9551



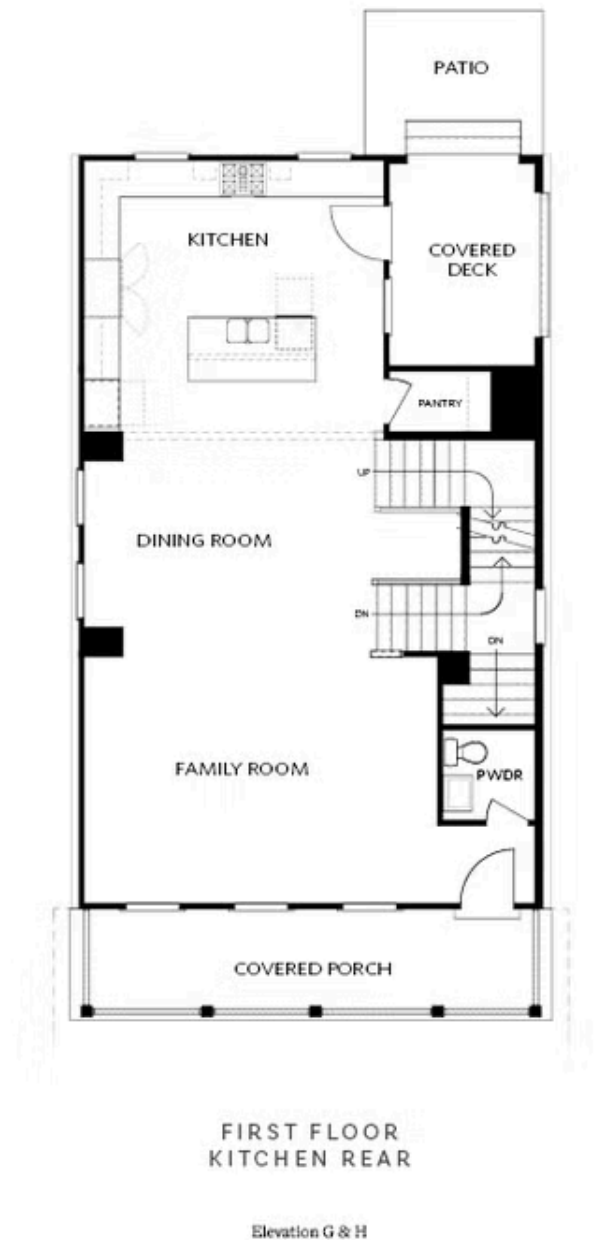
OPTIONAL BASEMENT

Want to Know More
About This Home?

CONTACT OUR COMMUNITY SALES MANAGER

NONE

Call Us @ 470.456.9551



Want to Know More
About This Home?

CONTACT OUR COMMUNITY SALES MANAGER
NONE
Call Us @ 470.456.9551



FIRST FLOOR
KITCHEN MIDDLE

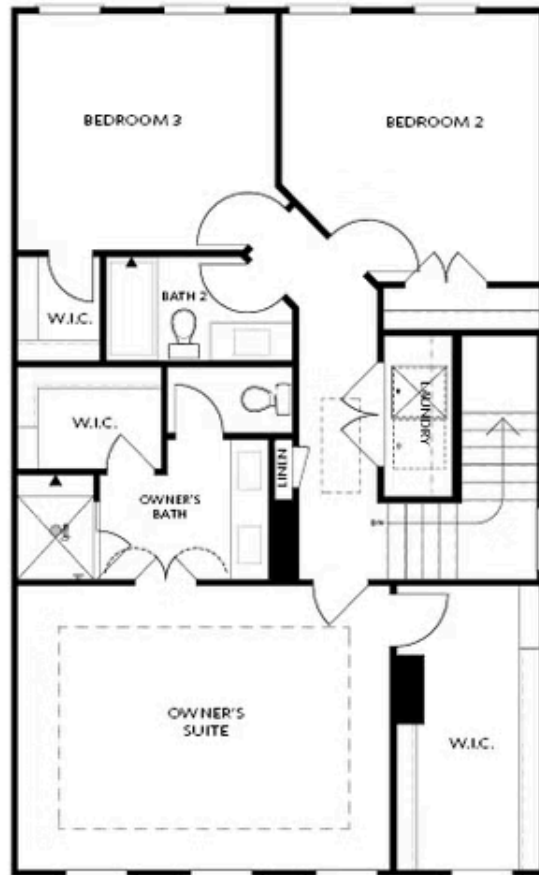
Elevation G & H

Want to Know More
About This Home?

CONTACT OUR COMMUNITY SALES MANAGER

NONE

Call Us @ 470.456.9551



SECOND FLOOR

Elevation G & H

Want to Know More
About This Home?

CONTACT OUR COMMUNITY SALES MANAGER

NONE

Call Us @ 470.456.9551



OPT Shower on Terrace Bath 3



OPT Shower Second Floor Bath 2



OPT linear Fireplace



OPT Fireplace



OPT Walk-In Shower



OPT Tub/Shower Combo

OPTIONS

Want to Know More
About This Home?

CONTACT OUR COMMUNITY SALES MANAGER

NONE

Call Us @ 470.456.9551