



PRICED FROM
\$674,900

 **2,552 Sq Ft**

 **3 - 4 Beds**

 **3.5 Baths**

 **2 Car Garage**

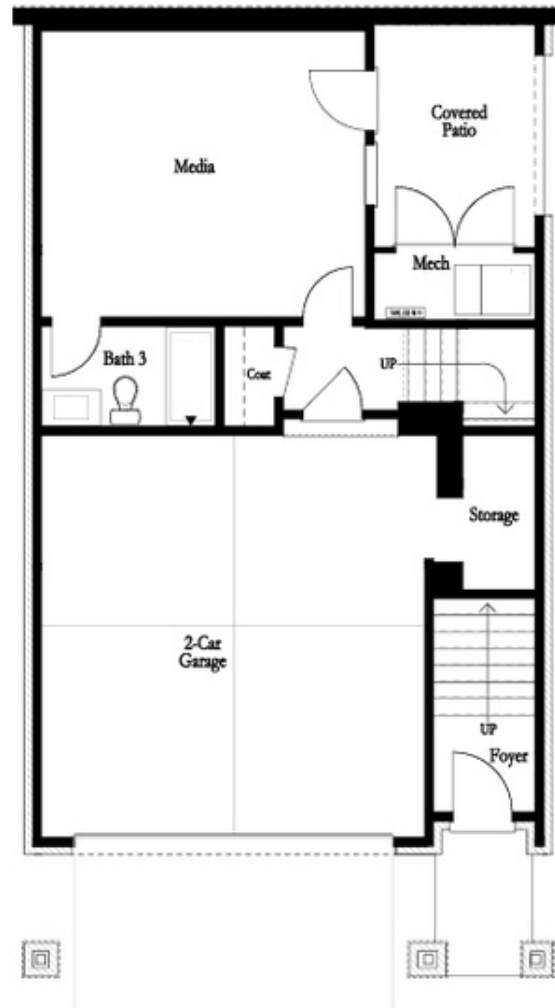
 **3.0 Story**

- **Media Room/Optional Bedroom with Private Access to a Covered Patio with Full Bathroom in the Basement**
- **Front Covered Porch Expands the Entire Width of the House on the First Floor - Bringing Ample Natural Light into the Family Room**
- **Optional Kitchen Location (Rear or Middle of the first floor)**
- **Open Concept - Views from the Kitchen, Dining Room and Family Room**
- **Large Covered Deck at the Rear of the First Floor**

[Read More Online](#)

Available Elevations





BASEMENT

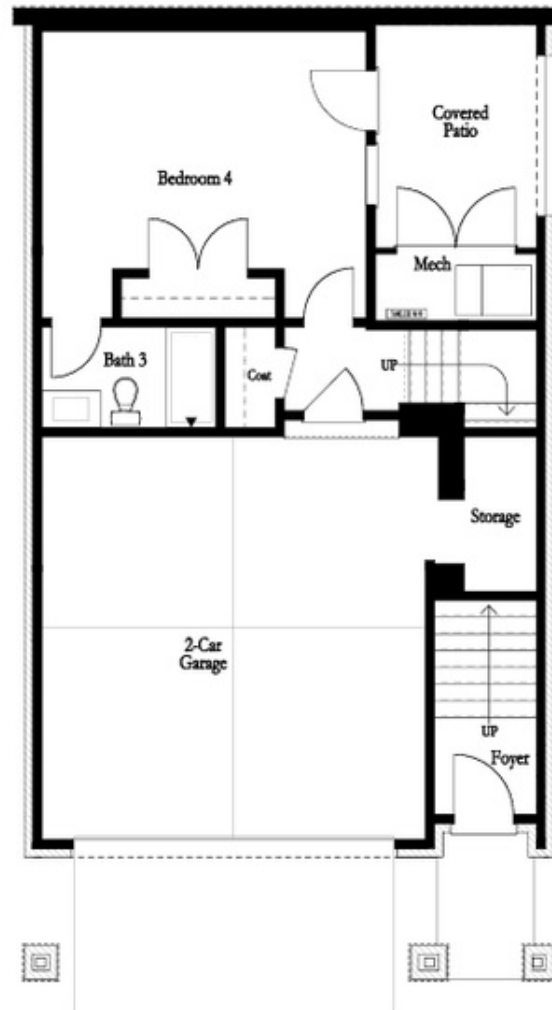
Elevation G & H

Want to Know More
About This Home?

CONTACT OUR COMMUNITY SALES MANAGER

NONE

Call Us @ 470.456.9551



OPT Bedroom 4 ilo Media Room

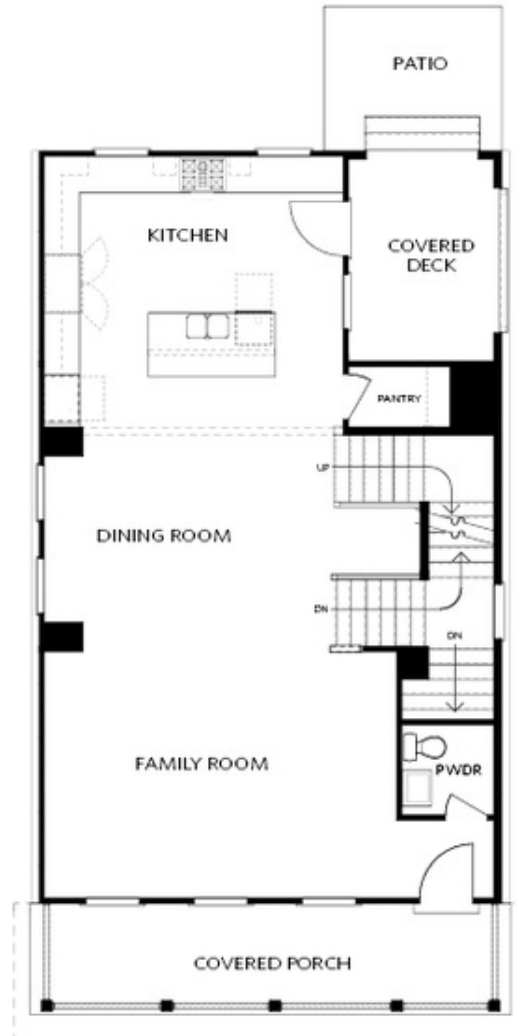
OPTIONAL BASEMENT

Want to Know More
About This Home?

CONTACT OUR COMMUNITY SALES MANAGER

NONE

Call Us @ 470.456.9551



FIRST FLOOR
KITCHEN REAR

Elevation G & H

Want to Know More
About This Home?

CONTACT OUR COMMUNITY SALES MANAGER

NONE

Call Us @ 470.456.9551



FIRST FLOOR
KITCHEN MIDDLE

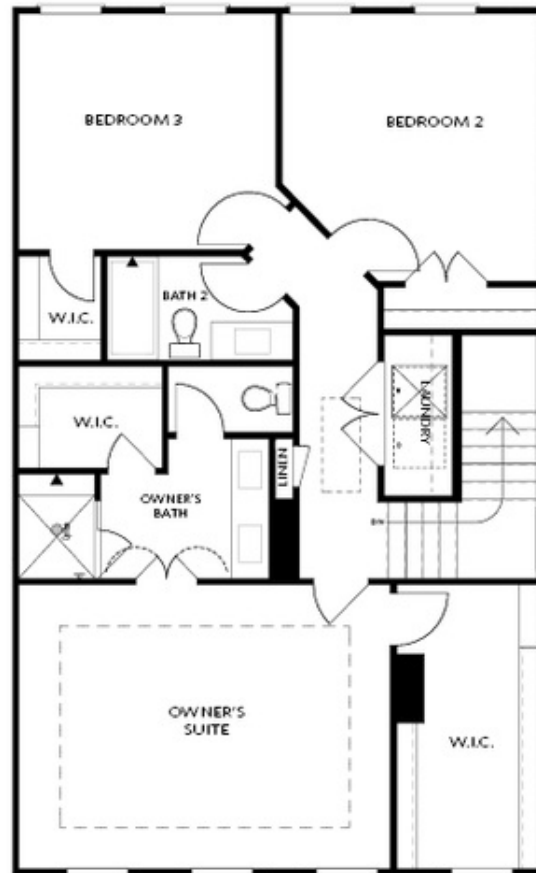
Elevation G & H

Want to Know More
About This Home?

CONTACT OUR COMMUNITY SALES MANAGER

NONE

Call Us @ 470.456.9551



SECOND FLOOR

Elevation G & H

Want to Know More
About This Home?

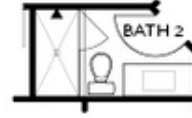
CONTACT OUR COMMUNITY SALES MANAGER

NONE

Call Us @ 470.456.9551



OPT Shower on Terrace Bath 3



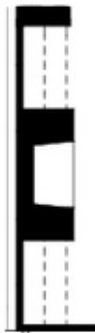
OPT Shower Second Floor Bath 2



OPT Walk-In Shower



OPT linear Fireplace



OPT Fireplace



OPT Tub/Shower Combo

OPTIONS

Want to Know More
About This Home?

CONTACT OUR COMMUNITY SALES MANAGER

NONE

Call Us @ 470.456.9551