



PRICED FROM  
**\$645,900**

 **2,453 - 2,816 Sq Ft**

 **4 - 5 Beds**

 **3 - 4 Baths**

 **2 Car Garage**

 **2.0 - 3.0 Story**

- **Classic 2-Story Single-Family Home with Optional 3rd Story**
- **Open Concept with a view from the Kitchen to the Dining to the Family Room**
- **L-Shaped Kitchen with seating for 3 at the Large Kitchen Island**
- **Sliding Glass Door Opens to a Patio off the Family Room - Brings the Outdoors In**
- **Optional Covered Patio off the Family Room**
- **Second Floor Features the Owner's Suite, a Loft and Two Secondary Bedrooms**
- **Optional 3rd Floor Adds a 5th Bedroom and Full Bath**

[Read More Online](#)

## Available Elevations



Elevation C



FIRST FLOOR

Elevation C & D

Want to Know More  
About This Home?

CONTACT OUR COMMUNITY SALES MANAGER

**NONE**

Call Us @ 470.456.9551



SECOND FLOOR

Elevation C

Want to Know More  
About This Home?

CONTACT OUR COMMUNITY SALES MANAGER

**NONE**

Call Us @ 470.456.9551



SECOND FLOOR

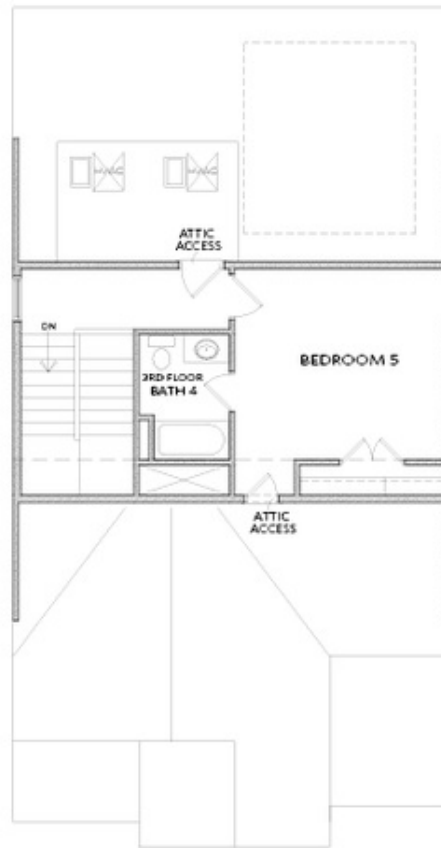
Elevation D

Want to Know More  
About This Home?

CONTACT OUR COMMUNITY SALES MANAGER

**NONE**

Call Us @ 470.456.9551



OPT THIRD FLOOR

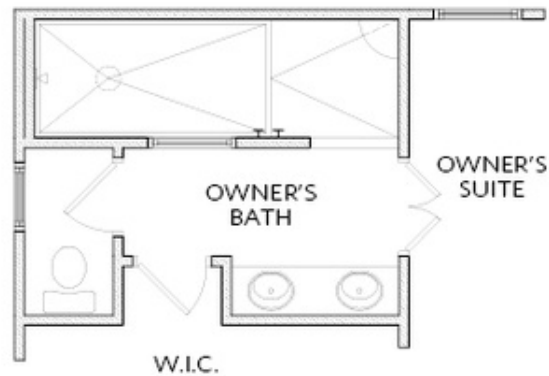
Elevation C & D

Want to Know More  
About This Home?

CONTACT OUR COMMUNITY SALES MANAGER

**NONE**

Call Us @ 470.456.9551



OPTIONS

Want to Know More  
About This Home?

CONTACT OUR COMMUNITY SALES MANAGER

**NONE**

Call Us @ 470.456.9551