



PRICED AT
\$479,400

 2004 Sq Ft

 3 Beds

 3.5 Baths

 2 Car Garage

 3.0 Story

Elevate Your Savings with \$20,000 Promotion on Contracts written in February, (Current price includes this discount)! Promotion can be applied towards a price reduction, closing cost, rate buy and more giving you the flexibility to save where it matters most. Discover The Garwood by The Providence Group. Quick Move In! With Energy Star Certification, the home beautifully marries rustic appeal with contemporary comforts. Upon entering, you'll find a welcoming recessed foyer leading into a bright, open-concept living space. The airy great room effortlessly transitions to a sunroom, a peaceful retreat perfect for savoring the sweeping views. Designed for seamless living, the Garwood floor plan boasts gas appliances and a range of thoughtfully selected energy-efficient features. The interior finishes are part of our stunning warm stone design collection, created by our award-winning design team. Located just a short drive from Cumming City Center and downtown, you'll enjoy convenient access to a variety of shops and dining options. Whether you're discovering the vibrant local culture or relaxing in your serene mountain getaway, this townhome offers the ideal blend of luxury, comfort, and convenience. Don't miss this exclusive opportunity—your new home at Palisades awaits!

**Want to Know More
About This Home?**

CONTACT OUR COMMUNITY SALES MANAGER
Call Us @ 470.456.9551



FIRST FLOOR

Elevation J

Want to Know More
About This Home?

CONTACT OUR COMMUNITY SALES MANAGER
Call Us @ 470.456.9551

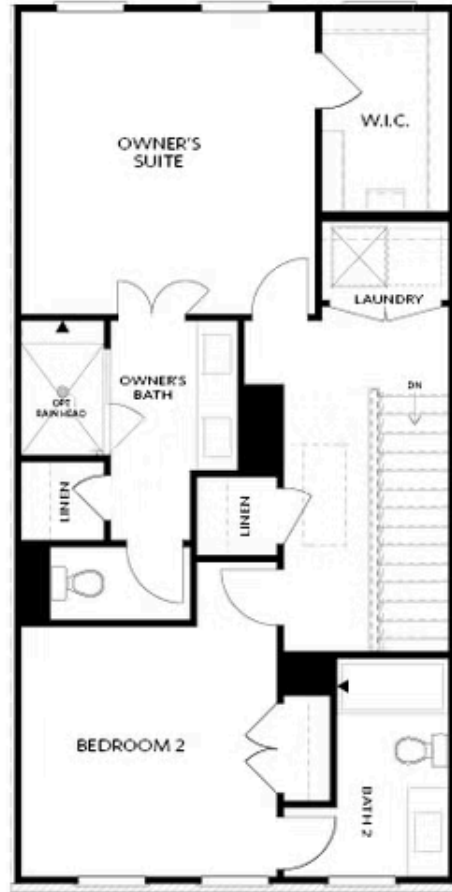


SECOND FLOOR

Elevation J

Want to Know More
About This Home?

CONTACT OUR COMMUNITY SALES MANAGER
Call Us @ 470.456.9551

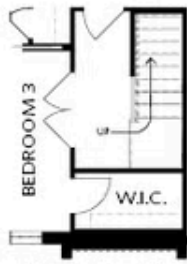


THIRD FLOOR

Elevation J

Want to Know More
About This Home?

CONTACT OUR COMMUNITY SALES MANAGER
Call Us @ 470.456.9551



OPT Double Doors
 on Bedroom 3



OPT Sunroom ilo Full Deck



OPT Owner's
 Walk-Through Shower



OPT Shower ilo
 Tub/Shower Combo



OPT Fireplace



OPT Linear Fireplace



OPT Owner's Shower &
 Tub Combo

FIRST FLOOR

SECOND FLOOR

THIRD FLOOR

OPTIONS

Want to Know More
 About This Home?

CONTACT OUR COMMUNITY SALES MANAGER
 Call Us @ 470.456.9551