



PRICED AT
\$469,900

 2004 Sq Ft

 3 Beds

 3.5 Baths

 2 Car Garage

 3.0 Story

HOME OF THE MONTH - Elevate Your Savings at Palisades with Preferred Lender for the month of May! Elevated living at Palisades gated community in Downtown Cumming! Discover The Glendale by The Providence Group. Move in Ready Home - This exceptional townhome, perched on a scenic mountaintop, offers breathtaking views of Cumming. Featuring a modern take on farmhouse charm, this Energy Star Certified home delivers both style and efficiency. The open-concept design welcomes an abundance of natural light, enhancing the spacious and inviting interior. Enjoy quiet moments in the sunroom or relax in the terrace-level suite, complete with a standing shower. Upstairs, the owner's retreat offers luxury and comfort with a soaking tub and double vanity. Outfitted with gas appliances and thoughtfully selected energy-efficient features, this home is built for effortless living. Located just minutes from Cumming City Center and downtown, you'll love the convenience of nearby shopping and dining. The interior showcases selections from our Warm Linen Design Collection, curated by our award-winning design team. Mountain views meet modern living at Palisades—your new home, The Glendale, is waiting!

**Want to Know More
About This Home?**

CONTACT OUR COMMUNITY SALES MANAGER
Call Us @ 470.456.9551



Elevations B & C Floor Plan Layout

Want to Know More
About This Home?

CONTACT OUR COMMUNITY SALES MANAGER
Call Us @ 470.456.9551

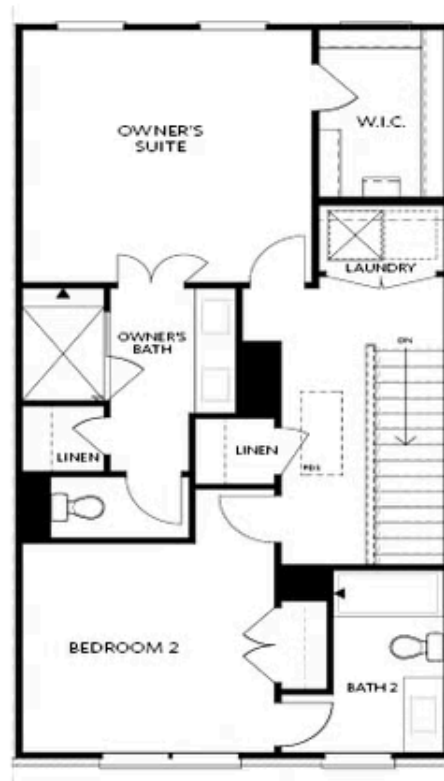


FIRST FLOOR

Elevations B & C Floor Plan Layout

Want to Know More
About This Home?

CONTACT OUR COMMUNITY SALES MANAGER
Call Us @ 470.456.9551

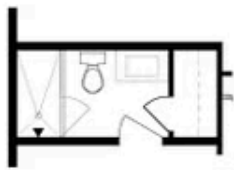


SECOND FLOOR

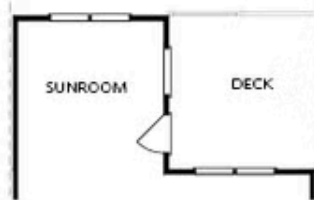
Elevations B & C Floor Plan Layout

Want to Know More
About This Home?

CONTACT OUR COMMUNITY SALES MANAGER
Call Us @ 470.456.9551



OPT Bath 3 Shower ilo
 Tub/Shower Combo



OPT Sunroom ilo Full Deck



OPT Owner's
 Walk-Through Shower



OPT Stair Landing
 on Terrace



OPT Fireplace



OPT Linear Fireplace



OPT Owner's Shower &
 Tub Combo

OPTIONS

Want to Know More
 About This Home?

CONTACT OUR COMMUNITY SALES MANAGER
 Call Us @ 470.456.9551