






PRICED AT  
**\$487,650**

-  1893 Sq Ft
-  3 Beds
-  3.5 Baths
-  2 Car Garage
-  3.0 Story

Elevate Your Savings with \$20,000 Promotion on Contracts written in February! Promotion can be applied towards a price reduction, closing cost, rate buy and more giving you the flexibility to save where it matters most. Discover The Glendale by The Providence Group. MOVE IN READY Welcome to Palisades, where community and comfort come together in the exceptional Glendale townhome by The Providence Group. Nestled in a thoughtfully designed neighborhood, this home reflects a perfect blend of timeless farmhouse charm and modern, energy-efficient living. Step inside to an open-concept layout bathed in natural light, creating a warm and inviting atmosphere ideal for everyday life and entertaining. The terrace level offers both style and versatility with a full walk-in shower and a flexible office or guest bedroom. Upstairs, the main living space opens up beautifully, with a spacious kitchen showcasing 42-inch soft-close cabinetry, under-cabinet lighting, and an oversized island that seats up to four—perfect for gathering and entertaining. The top floor boasts a serene owner's retreat with a luxurious walk-in shower, dual vanities, and a secondary bedroom that offers a tranquil retreat. A rear-entry garage preserves the home's attractive curb appeal, while the fenced front yard is ideal for entertaining, relaxing, or ...

**Want to Know More  
About This Home?**

CONTACT OUR COMMUNITY SALES MANAGER  
Call Us @ 470.456.9551

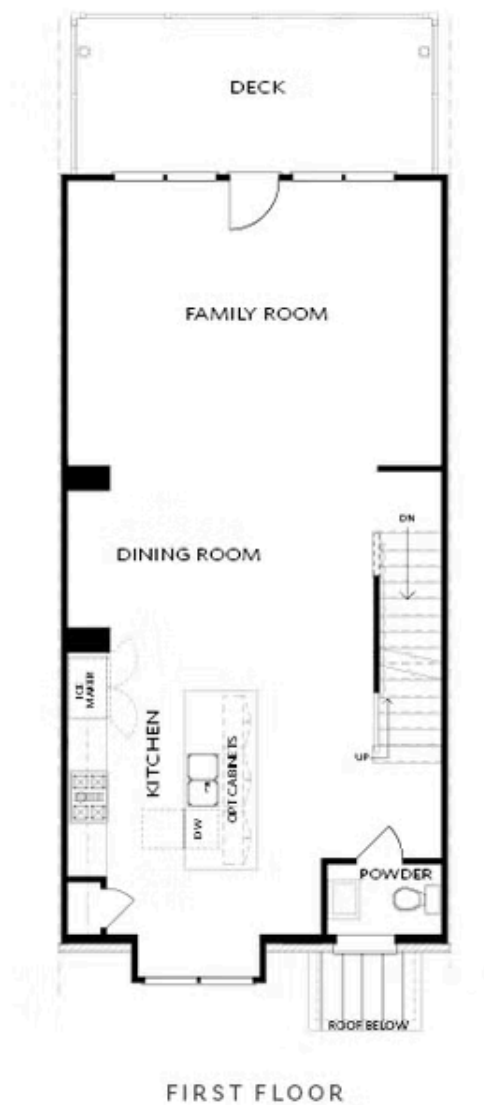


TERRACE

Elevations B & C Floor Plan Layout

Want to Know More  
About This Home?

CONTACT OUR COMMUNITY SALES MANAGER  
Call Us @ 470.456.9551



Elevations B & C Floor Plan Layout

Want to Know More  
About This Home?

CONTACT OUR COMMUNITY SALES MANAGER  
Call Us @ 470.456.9551



## SECOND FLOOR

Elevations B & C Floor Plan Layout

Want to Know More  
About This Home?

CONTACT OUR COMMUNITY SALES MANAGER  
Call Us @ 470.456.9551



OPT Bath 3 Shower & Tub/Shower Combo



OPT Sunroom & Full Deck



OPT Owner's Walk-Through Shower



OPT Stair Landing on Terrace



OPT Fireplace



OPT Linear Fireplace



OPT Owner's Shower & Tub Combo

## OPTIONS

Want to Know More  
About This Home?

CONTACT OUR COMMUNITY SALES MANAGER  
Call Us @ 470.456.9551