



PRICED FROM
\$484,400

 1,903 Sq Ft

 3 Beds

 3.5 Baths

 2 Car Garage

 3.0 Story

- Spacious Three Story Design with Open Main Level Layout
- Gourmet Kitchen with Island overlooking Dining and Family Room
- Owner's Suite and Private Bath with Dual Vanities and Over Size Walk-In Closet on Upper Level
- A Secondary Bedroom and Laundry on Upper Level
- Two Car Garage

[Read More Online](#)

Available Elevations





TERRACE

Elevations B & C Floor Plan Layout

Want to Know More
About This Home?

CONTACT OUR COMMUNITY SALES MANAGER
Call Us @ 470.456.9551

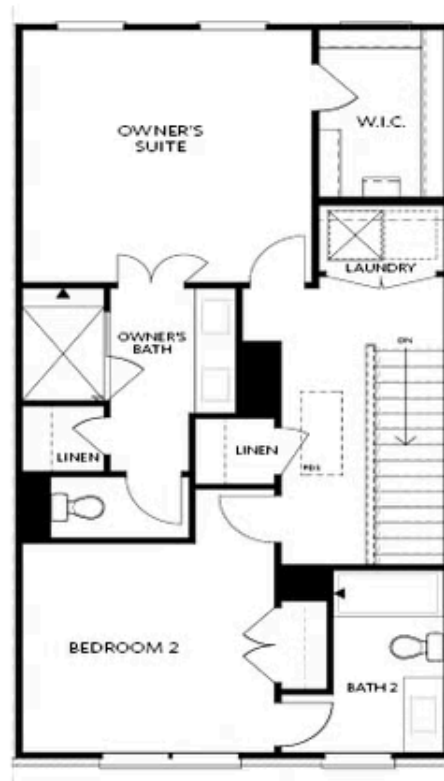


FIRST FLOOR

Elevations B & C Floor Plan Layout

Want to Know More
About This Home?

CONTACT OUR COMMUNITY SALES MANAGER
Call Us @ 470.456.9551

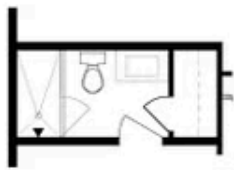


SECOND FLOOR

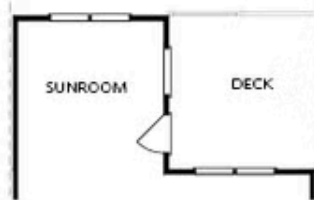
Elevations B & C Floor Plan Layout

Want to Know More
About This Home?

CONTACT OUR COMMUNITY SALES MANAGER
Call Us @ 470.456.9551



OPT Bath 3 Shower ilo
 Tub/Shower Combo



OPT Sunroom ilo Full Deck



OPT Owner's
 Walk-Through Shower



OPT Stair Landing
 on Terrace



OPT Fireplace



OPT Linear Fireplace



OPT Owner's Shower &
 Tub Combo

OPTIONS

Want to Know More
 About This Home?

CONTACT OUR COMMUNITY SALES MANAGER
 Call Us @ 470.456.9551