



PRICED AT
\$841,035

 2872 Sq Ft

 3 Beds

 3.5 Baths

 2 Car Garage

 2.0 Story

SPRING INTO A NEW HOME--- Awesome \$25,000.00 off on contracts written in MARCH - Incentive reflected in listing price. Come see the newest TPG Community, The Promenade at Sawnee Village!! At The Providence Group, we focus on building highly curated Atlanta neighborhoods--laying solid foundations that welcome your personalized touch!! This gated ACTIVE 55+ COMMUNITY is open and has floorplans to meet your active lifestyle! This community is intelligently designed so you can move in with ease and feel right at home! The Plaza collection features our Oakhurst home on homesite 47. A great corner home with views of the Sawnee Mountains. The amazing view continues when you enter this amazing laid out home. When you enter the home, you will be amazed at the space! Front room has ample space for a large dining room table or can be the perfect place for a home office. The laundry room is on the main floor as well as your massive family room with huge windows to let all the glorious GA sunshine in! The kitchen will feature quartz countertops, stylish tile backsplash, upgraded GE appliances and will provide ample storage space in the abundance of kitchen cabinets. Open to the spacious ...

**Want to Know More
About This Home?**

CONTACT OUR COMMUNITY SALES MANAGER
Call Us @ 470.462.9178



Want to Know More
About This Home?

CONTACT OUR COMMUNITY SALES MANAGER
Call Us @ 470.462.9178



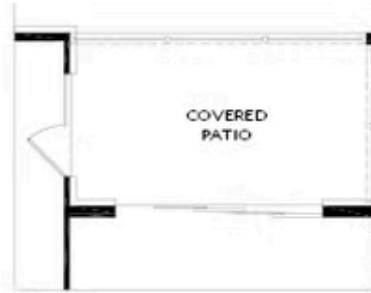
Elevation A

Want to Know More
About This Home?

CONTACT OUR COMMUNITY SALES MANAGER
Call Us @ 470.462.9178



OPT Owner's Wet Bath



OPT Slider Door at Covered Deck

OPTIONS

Want to Know More
About This Home?

CONTACT OUR COMMUNITY SALES MANAGER
Call Us @ 470.462.9178