



PRICED AT
\$848,555

 3140 Sq Ft

 4 Beds

 4.0 Baths

 2 Car Garage

 2.0 Story

Fall into Savings applied when closed by the end of November!! Come visit the Promenade at Sawnee Village, The Providence Groups Newest and most Anticipated Gated ACTIVE 55+ COMMUNITY is now OPEN!! The community itself will feature 3 different home collections, the Motor court, the Arden and the Plaza. All of our new construction homes will have the primary bedroom on main floor for convenience and comfort. The Promenade is just around the corner from: Lake Lanier, the Northside Forsyth Hospital, the City of Cumming downtown area and the Cumming City Center. If you like location, location, location...come see us! We are conveniently located near GA 400 and the Sawnee Mountains!! Such a gorgeous area. We will be a gated ACTIVE 55+ ADULT COMMUNITY...exclusive amenities include pickleball, a clubhouse with catering kitchen, exercise room, great pool and fireplaces. Now that you are in love with the community, let's discuss this beautiful home known as the Bullard. Featuring a desirable main-level owner's suite, this home is designed for modern comfort and luxury living. The bathroom will feature our walk-in shower with drying station, double vanities and large owners' closets. Upon entry through the formal foyer, you are greeted with a sense ...

**Want to Know More
About This Home?**

CONTACT OUR COMMUNITY SALES MANAGER
Call Us @ 470.462.9178

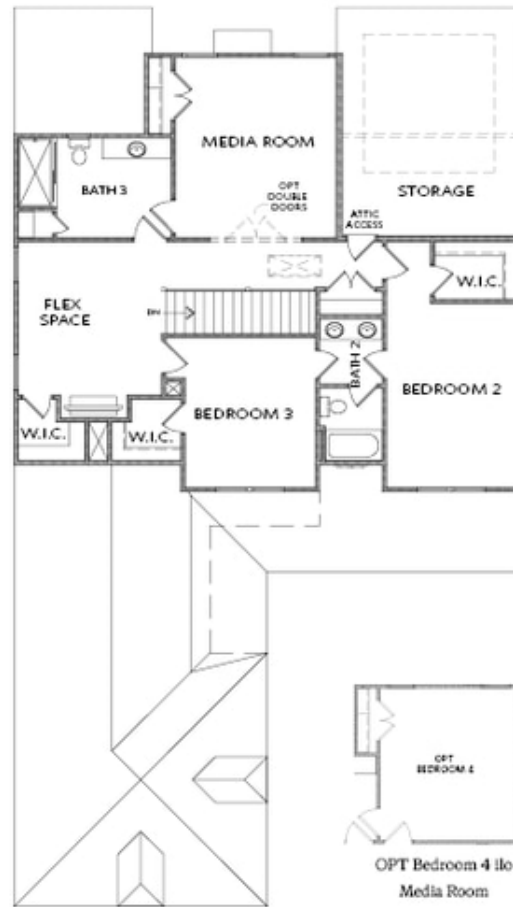


FIRST FLOOR

Elevation A

Want to Know More
About This Home?

CONTACT OUR COMMUNITY SALES MANAGER
Call Us @ 470.462.9178



SECOND FLOOR

Elevation A

**Want to Know More
About This Home?**

CONTACT OUR COMMUNITY SALES MANAGER
Call Us @ 470.462.9178