



PRICED AT
\$710,325

 2495 Sq Ft

 4 Beds

 3.0 Baths

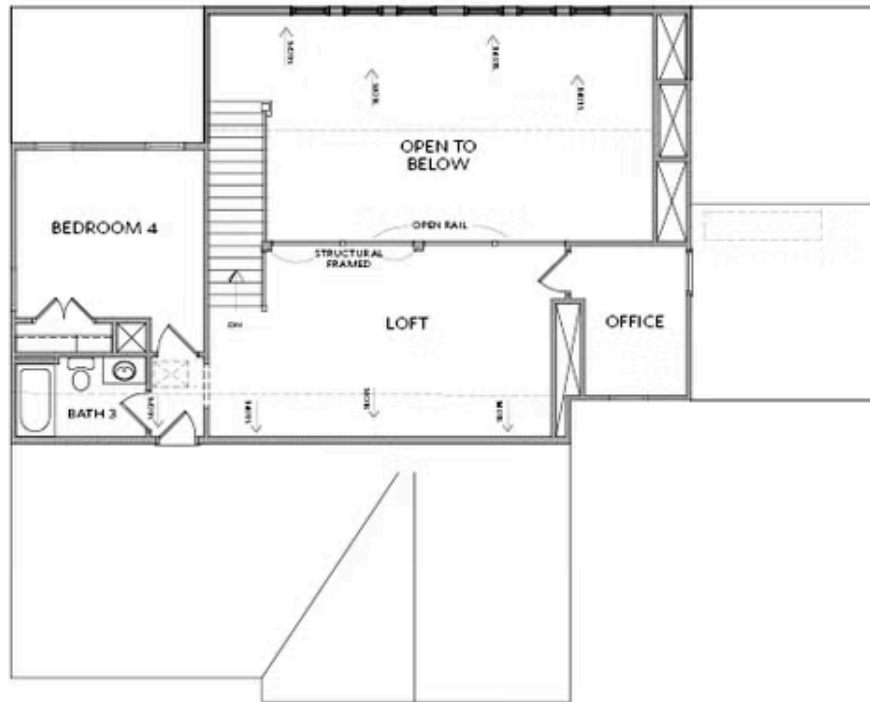
 2 Car Garage

 2.0 Story

Sizzling Summer Savings! The Providence Group Newest and most Anticipated Gated ACTIVE 55+ COMMUNITY is now available. The Providence Groups Motor Court Collection featuring THE Lawrence II floor plan. Welcome to your dream home, where luxury meets tranquility. This exceptional master-on-main residence is perfectly situated on a private lot, ensuring peace and seclusion. As you enter, you are greeted by a foyer that flows into an open-concept living space adorned with elegant finishes and hardwood floors throughout. The spacious living room with its soaring ceilings and cozy fireplace, is perfect for both entertaining guests and quiet family evenings. The gourmet kitchen is a chef's delight, with Stainless steel GE cooktop and microwave/oven combo, Cambria quartz countertops with eased edge, upgraded white kitchen stacked cabinets that are soft close draws and doors, Driftwood island with pull-out trashcan and farmhouse sink opens up to vaulted family and dining room with lots of light. Retreat to the luxurious main-level suite, a sanctuary of comfort and style. This private haven includes a generous bedroom, a lavish ensuite bath with mega walk in shower with drying area. This homes boasts 2 additional bedrooms that share a full bathroom on the main level. Hardwood floors ...

**Want to Know More
About This Home?**

CONTACT OUR COMMUNITY SALES MANAGER
Call Us @ 470.462.9178

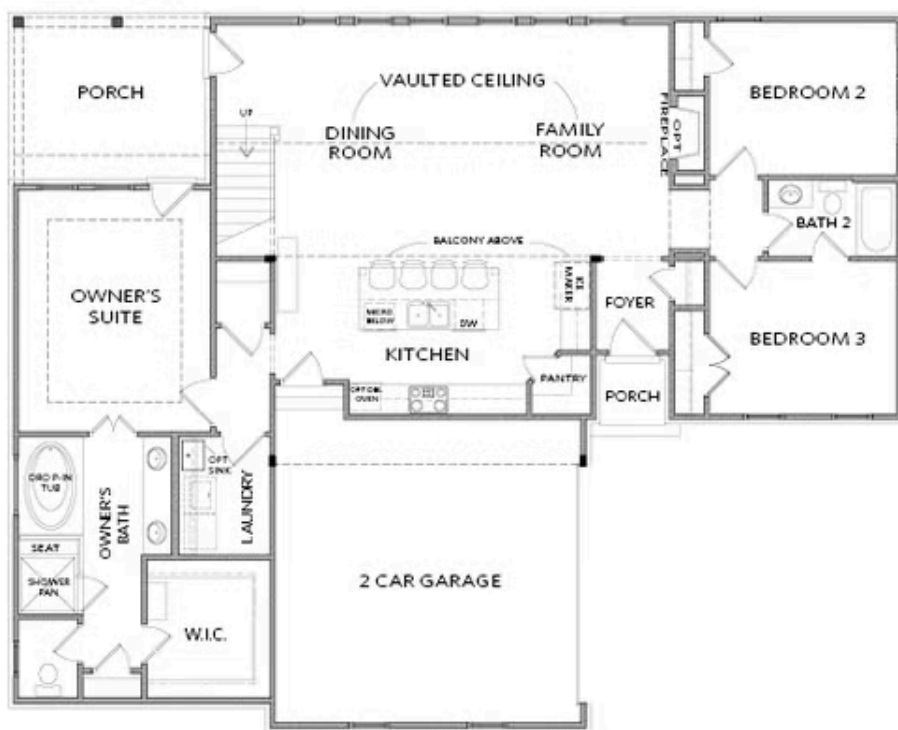


SECOND FLOOR

Elevation A

Want to Know More
About This Home?

CONTACT OUR COMMUNITY SALES MANAGER
Call Us @ 470.462.9178



FIRST FLOOR

Elevation A

Want to Know More
About This Home?

CONTACT OUR COMMUNITY SALES MANAGER
Call Us @ 470.462.9178