



PRICED AT
\$717,365

 2221 Sq Ft

 3 Beds

 3.0 Baths

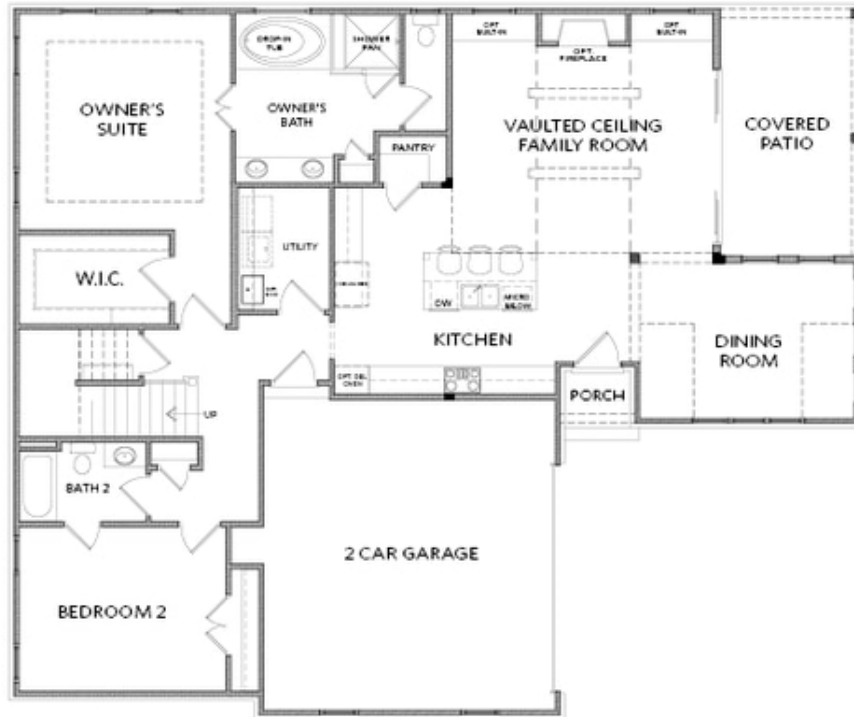
 2 Car Garage

 2.0 Story

Spring into a New Home!! The Providence Group Newest and most Anticipated Gated ACTIVE 55+ COMMUNITY is now available. The Providence Groups Motor Court Collection featuring THE MILTON floor plan. Welcome home, where luxury AND Lifestyle are yours to enjoy!!! This exceptional master-on-main residence is perfectly situated on a private lot, ensuring peace and seclusion. Enter the breathtaking vaulted family room featuring soaring ceiling and abundant natural light, the family room features a direct vent fireplace with painted brick from floor to ceiling. This open and expansive space flows effortlessly into the open concept chefs kitchen. The chefs kitchen is equipped with GE stainless steel appliances, cooktop with vented hood with backsplash to the ceiling, microwave/oven, a generous island with Cambria quartz countertops with eased edge and sophisticated finishes, stacked kitchen cabinets with soft pull doors and drawers, pullout trash bin, farmhouse white porcelain sink. Hardwood flooring on the entire main level!! - perfect for both casual family time and stylish entertaining. Discover the elegance of the master-on-main suite, a luxurious retreat featuring a spacious bedroom, a spa-like ensuite bathroom with dual vanities, a free standing soaking tub, and a walk-in-shower with bench. The suite also includes a large walk-in ...

**Want to Know More
About This Home?**

CONTACT OUR COMMUNITY SALES MANAGER
Call Us @ 470.462.9178

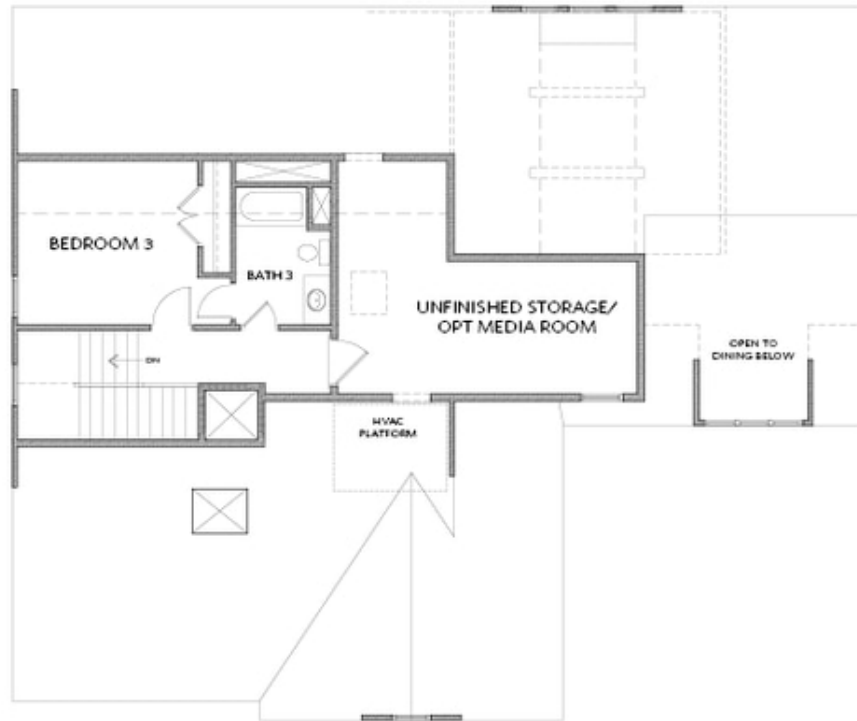


FIRST FLOOR

Elevation A

**Want to Know More
About This Home?**

CONTACT OUR COMMUNITY SALES MANAGER
Call Us @ 470.462.9178



SECOND FLOOR

Elevation A

**Want to Know More
About This Home?**

CONTACT OUR COMMUNITY SALES MANAGER
Call Us @ 470.462.9178