



PRICED AT
\$688,169

 2221 Sq Ft

 3 Beds

 3.0 Baths

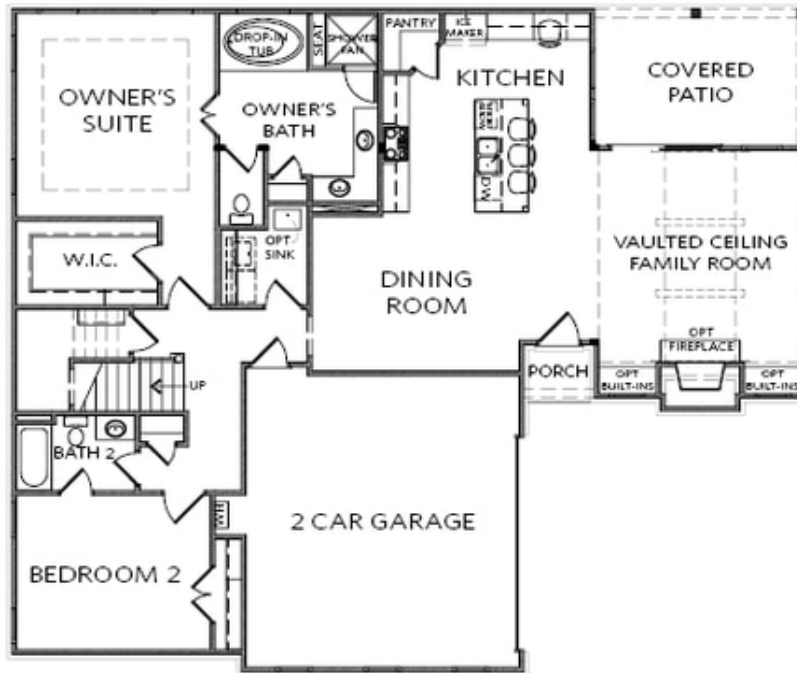
 2 Car Garage

 2.0 Story

Spring into a New Home!! The Providence Group Newest and most Anticipated Gated ACTIVE 55+ COMMUNITY is now available. The Providence Groups Motor Court Collection featuring THE JORDAN floor plan. This home features a coveted 'master on main' layout, with guest suite on main level, open concept with side entry garage. Step into the spacious master suite, a tranquil sanctuary boasting privacy and comfort. The open floor plan seamlessly integrates the master suite with the rest of the home, creating an inviting space for daily living and entertaining. Whether you're enjoying quiet mornings or hosting guests, this master on main home provides the ultimate in comfort and functionality. This home features 10' foot ceiling on the main level along with hardwood floors. Elevate your living experience in this stunning home featuring an a chef's kitchen where the heart of the home is. This kitchen boasts GE appliances, stacked kitchen cabinets, stainless steel appliances, quartz countertops and so much more. The open-concept layout seamlessly connects the kitchen to the main living areas, creating a spacious and inviting atmosphere for entertaining guests or enjoying family time. Walk out through your sliders to your outdoor entertaining area with covered patio and fenced in ...

**Want to Know More
About This Home?**

CONTACT OUR COMMUNITY SALES MANAGER
Call Us @ 470.462.9178

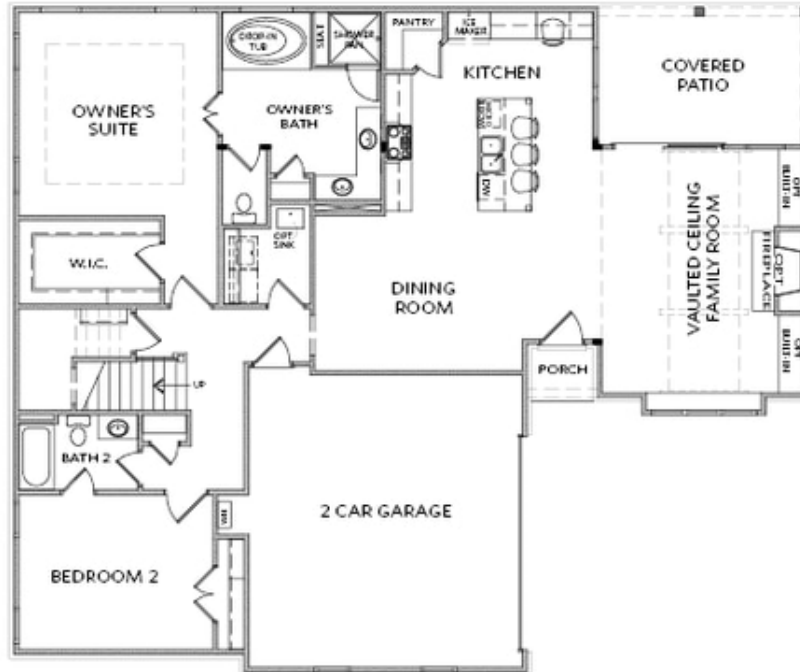


FIRST FLOOR

Elevation A

**Want to Know More
About This Home?**

CONTACT OUR COMMUNITY SALES MANAGER
Call Us @ 470.462.9178

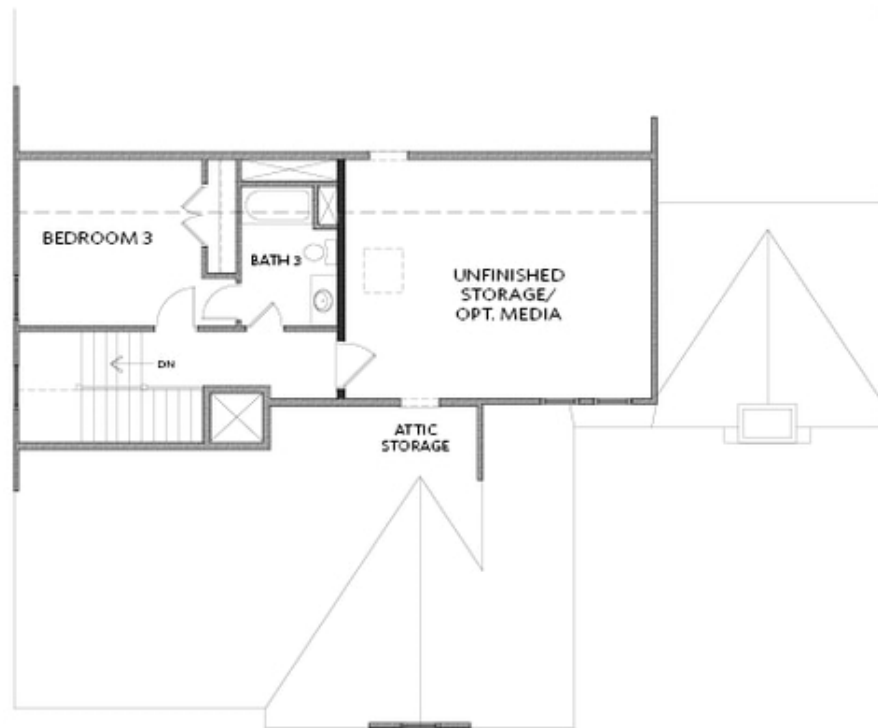


FIRST FLOOR

Elevation B

**Want to Know More
About This Home?**

CONTACT OUR COMMUNITY SALES MANAGER
Call Us @ 470.462.9178



SECOND FLOOR

Elevation A & B

**Want to Know More
About This Home?**

CONTACT OUR COMMUNITY SALES MANAGER
Call Us @ 470.462.9178