



PRICED AT
\$691,460

 2278 Sq Ft

 3 Beds

 3.0 Baths

 2 Car Garage

 2.0 Story

Sizzling Summer Savings! The Providence Group Newest and most Anticipated Gated ACTIVE 55+ COMMUNITY is now OPEN for sale! This beautiful corner location featuring The Lassiter floor plan. Covered front porch overlooking one community park. Raised foyer leading into Chef's Kitchen with plenty of white painted cabinets, oversized kitchen island, stainless steel appliances and gleaming hardwoods overlooks Dining. Family room with cozy gas Fireplace opens to Covered Patio with professionally landscaped and HOA maintained Yard that is fully fenced. You will find Spacious Owner's Suite on Main with large Walk-in Closet and Spa-like Bath featuring free standing tub, walk-in shower & double vanities. Another full Bedroom with Full bath on main with walk-in shower is perfect as guest or in-law en-Suite. Second floor is conveniently set up with another Bedroom and Full Bath as well as spacious Loft. Plenty of unfinished storage in walk-in Attic. This home features 10' foot ceiling on the main level along with hardwood floors. 2 Car Garage and plenty of guest parking in the community. This home has it all and is ready for Quick Move-In! Discover the epitome of active adult living in this vibrant 55+ community. Nestled in a serene setting, this meticulously ...

**Want to Know More
About This Home?**

CONTACT OUR COMMUNITY SALES MANAGER
Call Us @ 470.462.9178

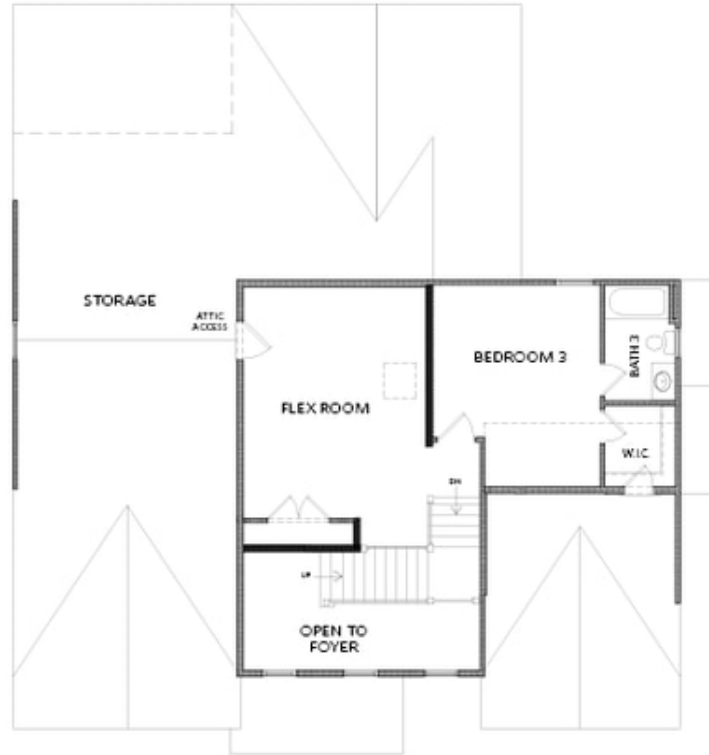


FIRST FLOOR

Elevation A

**Want to Know More
About This Home?**

CONTACT OUR COMMUNITY SALES MANAGER
Call Us @ 470.462.9178

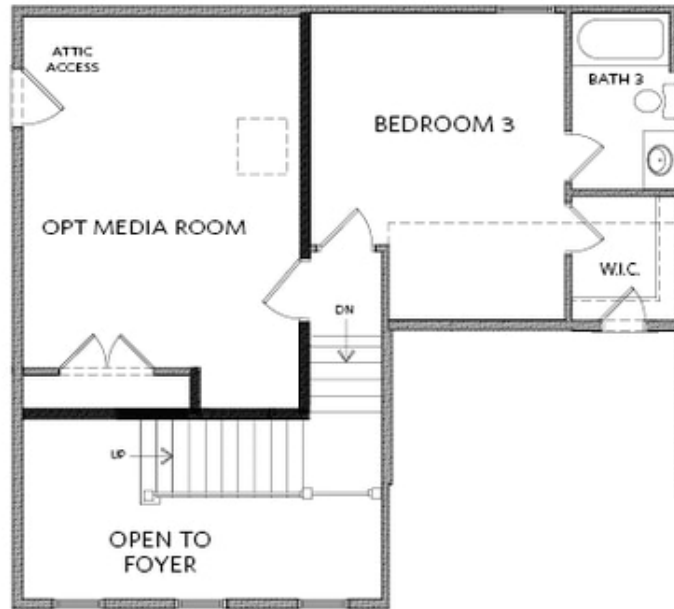


SECOND FLOOR

Elevation A

**Want to Know More
About This Home?**

CONTACT OUR COMMUNITY SALES MANAGER
Call Us @ 470.462.9178



OPT Media Room ilo Flex Room

**Want to Know More
About This Home?**

CONTACT OUR COMMUNITY SALES MANAGER
Call Us @ 470.462.9178