



PRICED AT  
**\$828,040**

 2964 Sq Ft

 4 Beds

 3.5 Baths

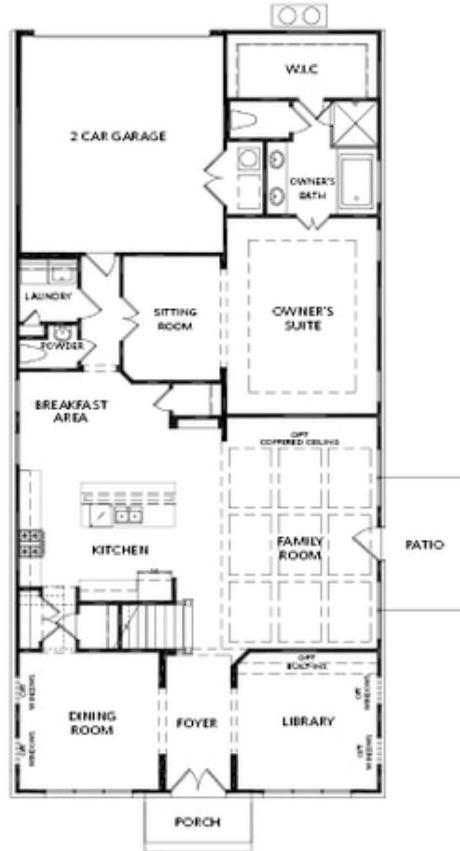
 3 Car Garage

 2.0 Story

Sizzling Summer Savings!!!! Welcome to Sawnee Village Promenade a Luxury living in gated 55+ active adult community! Nestled on a generously sized .25-acre corner lot, this single-family home boasts elegance and functionality at every turn. Step onto the sprawling covered front porch, where mornings are meant to be savored with a cup of coffee in hand. As you enter, the main level greets you with a masterfully designed floor plan. The master suite, conveniently located on the main level, offers a serene retreat with a cozy sitting area and a spa-like bath. Dual vanities, a zero-entry walk-in shower with a drying area, and a spacious walk-in closet elevate everyday routines to indulgent experiences. Entertaining is effortless with a dining room that seamlessly connects to the gourmet kitchen via a butler's pantry. The kitchen is a chef's delight, featuring an oversized island, painted cabinets, stainless steel appliances, a gas cooktop, and a microwave/oven combo. Hardwood floors grace the main level, stairs, and hallway, adding warmth and sophistication throughout. A den/library provides the perfect space for quiet reflection or remote work, while the family room beckons with a cozy gas fireplace, ideal for gathering with loved ones. Step outside to the covered patio, ...

**Want to Know More  
About This Home?**

CONTACT OUR COMMUNITY SALES MANAGER  
Call Us @ 470.462.9178

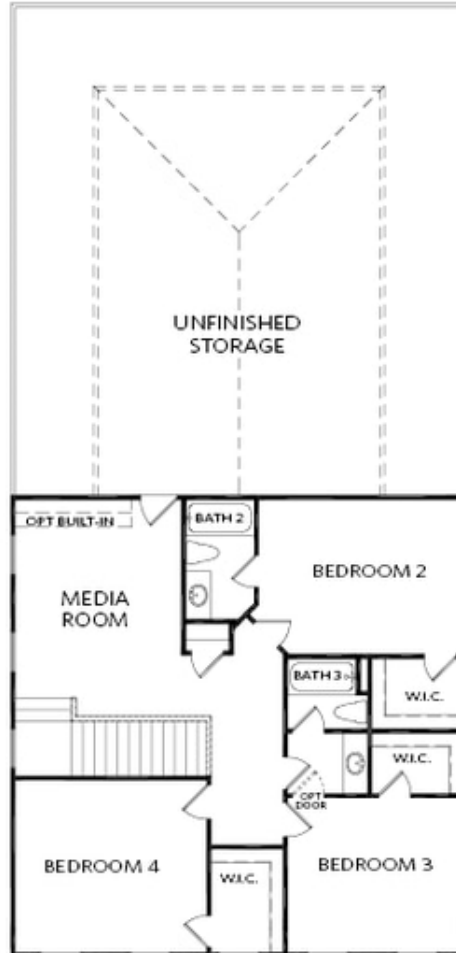


FIRST FLOOR

Elevation A

**Want to Know More  
About This Home?**

CONTACT OUR COMMUNITY SALES MANAGER  
Call Us @ 470.462.9178

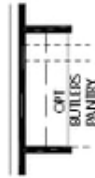


SECOND FLOOR

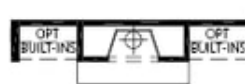
Elevation A

**Want to Know More  
About This Home?**

CONTACT OUR COMMUNITY SALES MANAGER  
Call Us @ 470.462.9178



OPT Butler's Pantry



OPT Fireplace



OPT Owner's  
Walk-In Shower



OPT Golf Cart Garage

## OPTIONS

**Want to Know More  
About This Home?**

CONTACT OUR COMMUNITY SALES MANAGER  
Call Us @ 470.462.9178