



PRICED AT  
**\$685,815**

 2264 Sq Ft

 3 Beds

 3.0 Baths

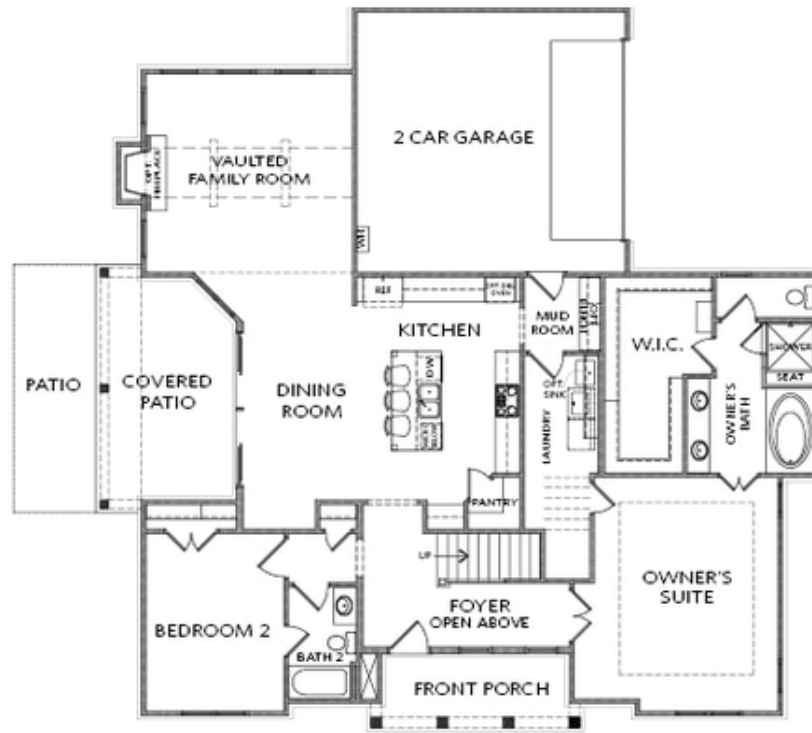
 2 Car Garage

 2.0 Story

Sizzling Summer Savings! The Providence Group Newest and most Anticipated Gated ACTIVE 55+ COMMUNITY is now OPEN for sale! Stop by to see this beautiful modern farmhouse with covered front porch overlooking one of the community's pocket parks. Discover the epitome of active adult living in this vibrant 55+ community. Nestled in a serene setting, this meticulously planned gated neighborhood offers a range of amenities tailored to the needs and preferences of its residents. Enjoy leisurely strolls along the sidewalk throughout the neighborhood, visit the many pocket parks or dog park, socialize with neighbors at the clubhouse which hosts a catering kitchen, exercise room, gathering space with 2 fireplaces or the clubhouse grounds which features a swimming pool, fire pits, pickleball courts and so much more! At TPG, we value our customer, team member, and vendor team safety. Our communities are active construction zones and may not be safe to visit at certain stages of construction. Due to this, we ask all agents visiting the community with their clients come to the office prior to visiting any listed homes. Please note, during your visit, you will be escorted by a TPG employee and may be required to wear flat, closed ...

**Want to Know More  
About This Home?**

CONTACT OUR COMMUNITY SALES MANAGER  
Call Us @ 470.462.9178

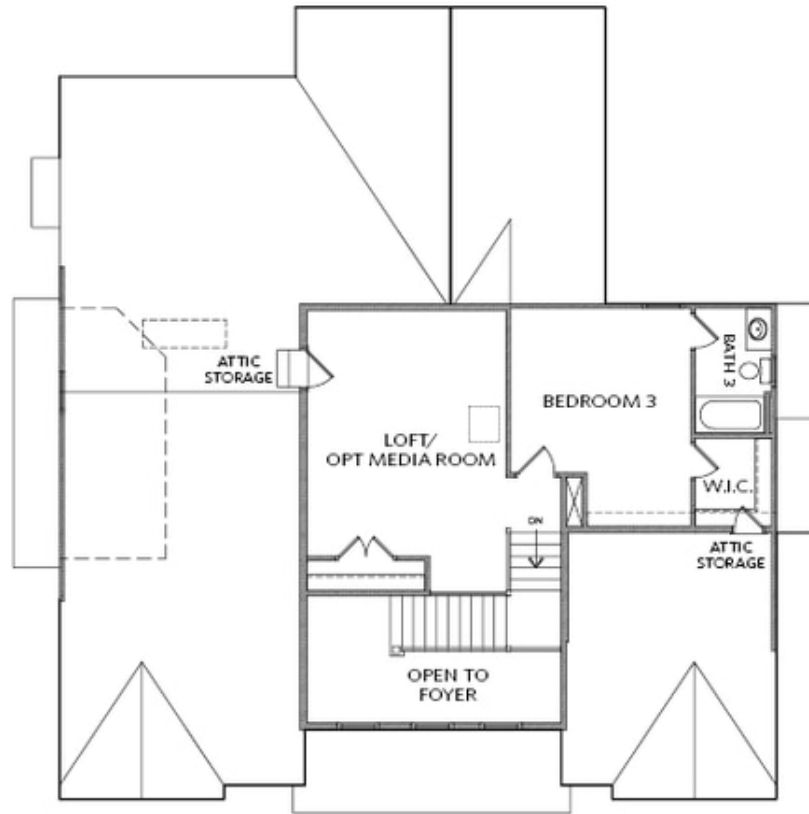


FIRST FLOOR

Elevation A

**Want to Know More  
About This Home?**

CONTACT OUR COMMUNITY SALES MANAGER  
Call Us @ 470.462.9178

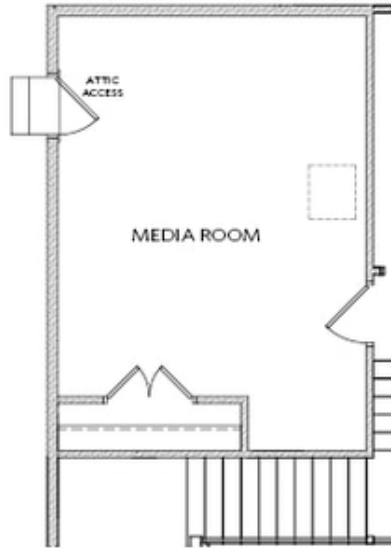


SECOND FLOOR

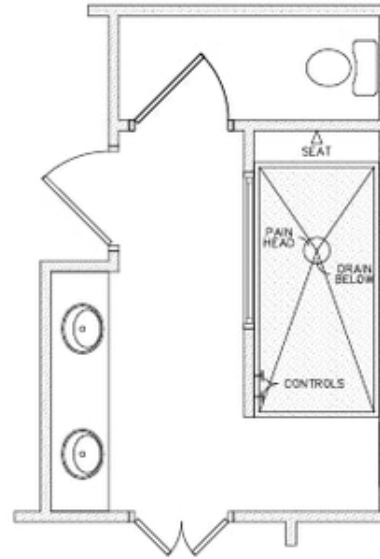
Elevation A

**Want to Know More  
About This Home?**

CONTACT OUR COMMUNITY SALES MANAGER  
Call Us @ 470.462.9178



OPT Media Room ilo Loft



OPT Owner's Walk-in Shower  
ilo Tub & Shower

## OPTIONS

**Want to Know More  
About This Home?**

CONTACT OUR COMMUNITY SALES MANAGER  
Call Us @ 470.462.9178