



PRICED AT  
**\$687,500**

 **2221 Sq Ft**

 **3 Beds**

 **3.0 Baths**

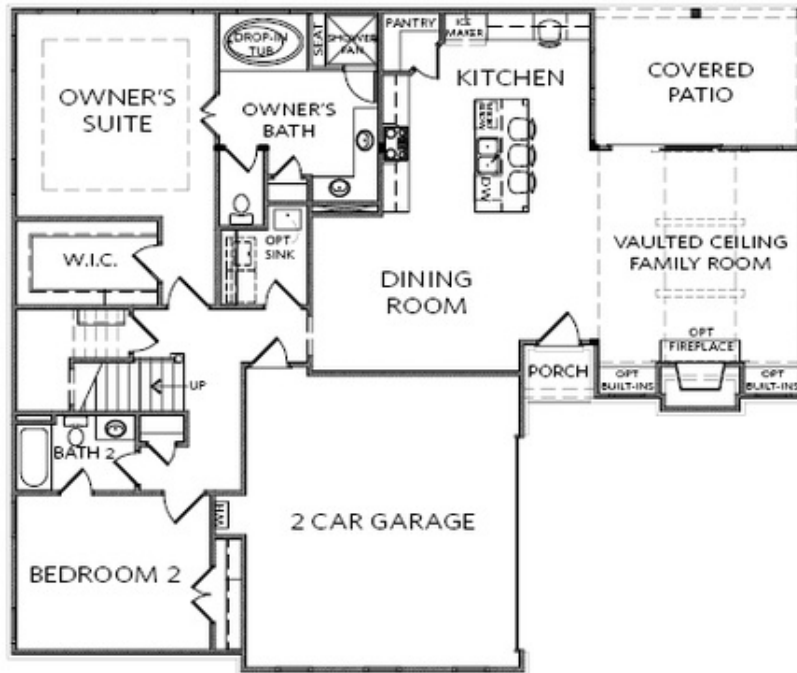
 **2 Car Garage**

 **2.0 Story**

**Home for the Holidays!!! Have you been searching for the perfect place to call home? If you have been searching for the perfect 55+ ACTIVE COMMUNITY, The Providence Groups Newest and most Anticipated Gated ACTIVE 55+ COMMUNITY is now available. The Promenade at Sawnee Village is a community conveniently located just minutes from GA 400, the City of Cumming, the Cumming City Center, Lake Lanier and the Northside Hospital of Forsyth. This gorgeous community will have a total of 221 homesites, all with the primary bedroom located on the main floor for ultimate convenience. This particular home is called, the Jordan and is part of our Motor Court collection. This home features an open concept floorplan with side entry garage. When you enter the home, you will notice the 10'-foot ceilings on the main level along with the flawless hardwood floors. Elevate your living experience in this stunning home featuring a chef's kitchen. After all, that is where the heart of the home is! This kitchen boasts GE appliances, stacked kitchen cabinets, quartz countertops, under counter lighting and so much more. The open-concept layout seamlessly connects the kitchen to the main living areas, creating a spacious and inviting atmosphere for ...**

**Want to Know More  
About This Home?**

**CONTACT OUR COMMUNITY SALES MANAGER**  
**Call Us @ 470.462.9178**

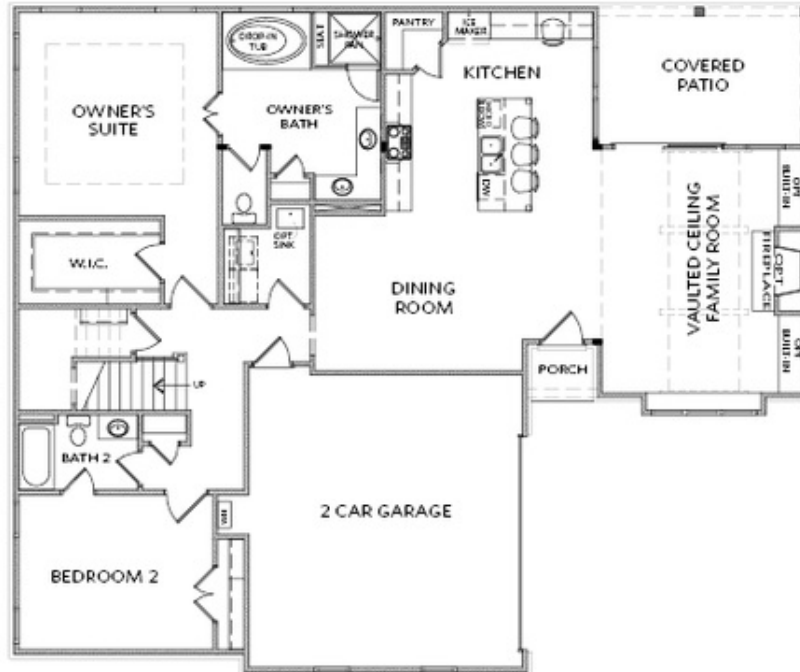


FIRST FLOOR

Elevation A

Want to Know More  
About This Home?

CONTACT OUR COMMUNITY SALES MANAGER  
Call Us @ 470.462.9178

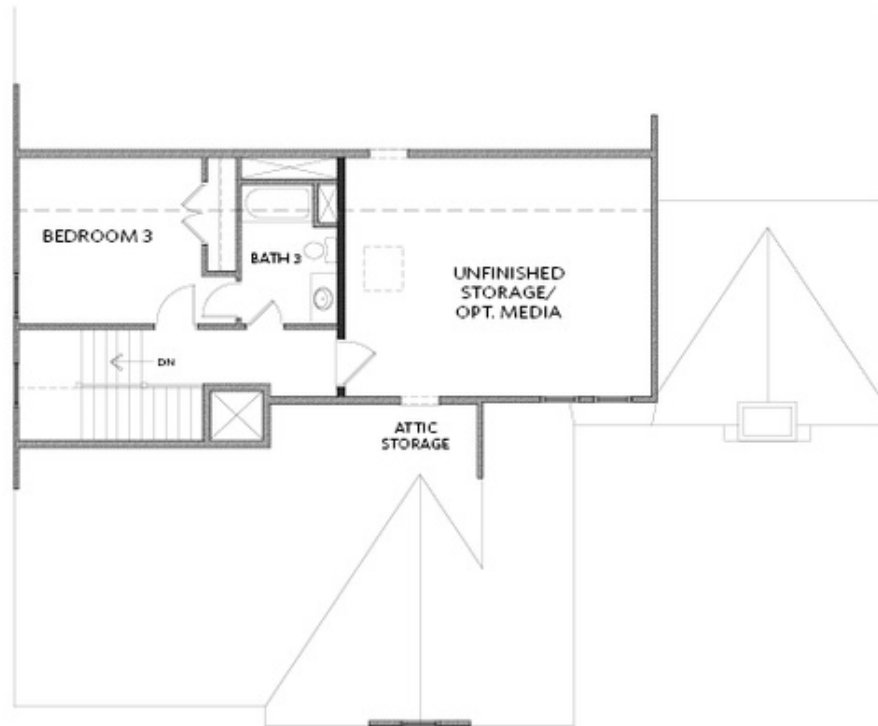


FIRST FLOOR

Elevation B

Want to Know More  
About This Home?

CONTACT OUR COMMUNITY SALES MANAGER  
Call Us @ 470.462.9178



SECOND FLOOR

Elevation A & B

Want to Know More  
About This Home?

CONTACT OUR COMMUNITY SALES MANAGER  
Call Us @ 470.462.9178