



PRICED AT  
**\$667,290**

 **2579 Sq Ft**

 **3 Beds**

 **3.0 Baths**

 **2 Car Garage**

 **2.0 Story**

**HOME FOR THE HOLIDAYS! Come see The Providence Groups Newest and most Anticipated Gated ACTIVE 55+ COMMUNITY!! Conveniently located in Cumming just around the corner from the Cumming City Center and GA 400. Our Lassiter floorplan features a covered front porch overlooking one community park. Raised foyer leading into Chef's Kitchen with plenty of cabinets, oversized kitchen island, stainless steel appliances and gleaming hardwoods overlooks Dining. Family room with cozy gas Fireplace opens to Covered Patio with professionally landscaped and HOA maintained Yard that is fully fenced. You will find Spacious Owner's Suite on Main with large Walk-in Closet and Spa-like Bath featuring our premier walk-in shower & double vanities. Another full Bedroom with Full bath on main with walk-in shower is perfect as guest or in-law en-Suite. Second floor is conveniently set up with another Bedroom and Full Bath as well as spacious Loft. Plenty of unfinished storage in walk-in Attic. This home features 10'-foot ceiling on the main level along with hardwood floors. 2 Car Garage and plenty of guest parking in the community. Discover the epitome of active adult living in this vibrant 55+ community. Nestled in a serene setting, this meticulously planned gated neighborhood offers a ...**

**Want to Know More  
About This Home?**

**CONTACT OUR COMMUNITY SALES MANAGER**  
**Call Us @ 470.462.9178**

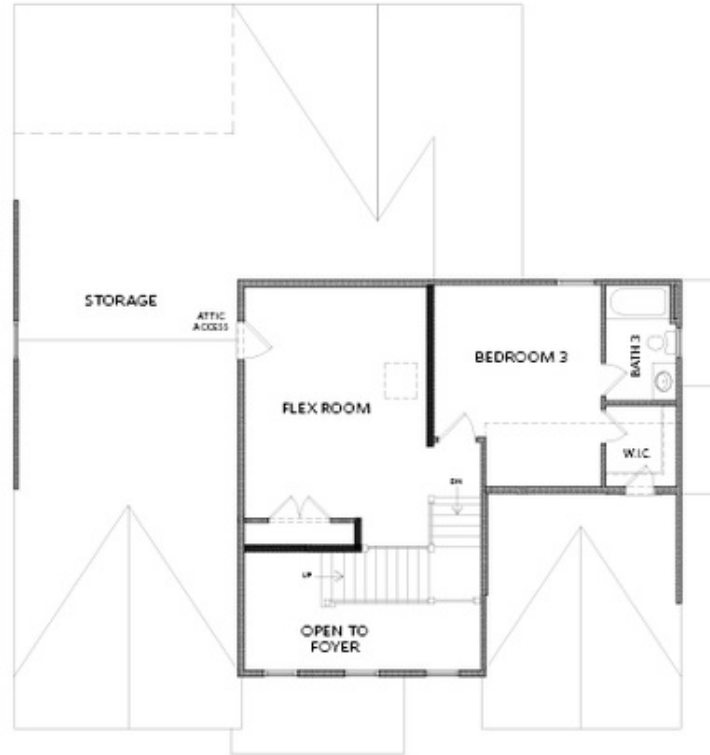


FIRST FLOOR

Elevation A

Want to Know More  
About This Home?

CONTACT OUR COMMUNITY SALES MANAGER  
Call Us @ 470.462.9178

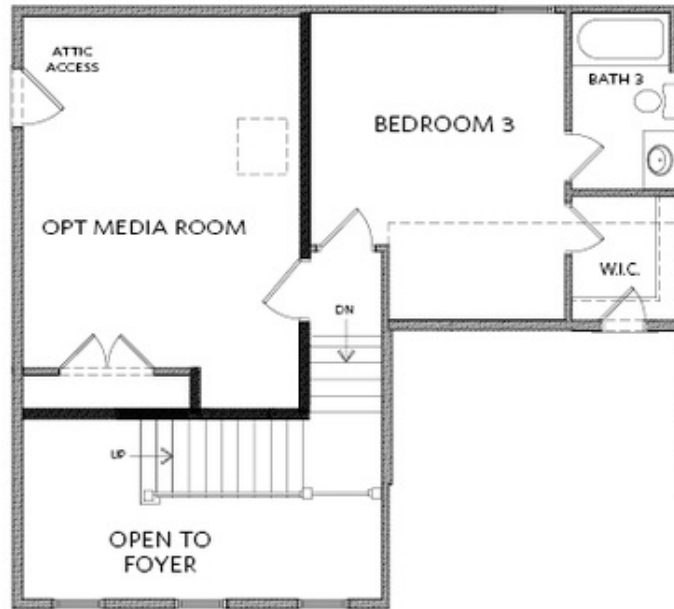


SECOND FLOOR

Elevation A

Want to Know More  
About This Home?

CONTACT OUR COMMUNITY SALES MANAGER  
Call Us @ 470.462.9178



OPT Media Room ilo Flex Room

Want to Know More  
About This Home?

CONTACT OUR COMMUNITY SALES MANAGER  
Call Us @ 470.462.9178