



PRICED AT
\$816,855

 **2583 Sq Ft**

 **4 Beds**

 **3.5 Baths**

 **2 Car Garage**

 **1.0 Story**

The McDaniel Floor Plan featured at The Providence Group Newest and most Anticipated Gated ACTIVE 55+ COMMUNITY is now available. Discover the epitome of active adult living in this vibrant 55+ community. Nestled in a serene setting, this meticulously planned neighborhood offers a range of amenities tailored to the needs and preferences of its residents. Enjoy leisurely strolls along the sidewalks throughout the neighborhood, visit the many pocket parks or dog park, socialize with neighbors at the clubhouse which hosts a catering kitchen, exercise room, gathering space with 2 fireplaces or the clubhouse grounds which features a swimming pool, fire pits, pickleball courts. Experience tranquil sanctuary boasting privacy and comfort. The open floor plan seamlessly integrates the master suite with the rest of the home, creating an inviting space for daily living and entertaining. This home is a blank slate, you will be able to put your finishing touches to it at our Design Center. Gourmet kitchen comes with 42" Upper cabinetry with crown molding, light rail, soft close doors & drawers, under cabinet lighting, quartz countertops and ceramic tile backsplash, stainless steel single bowl undermount sink. GE stainless steel appliance which can be upgraded at your design appointment. The ...

Want to Know More
About This Home?

CONTACT OUR COMMUNITY SALES MANAGER
Call Us @ 470.462.9178



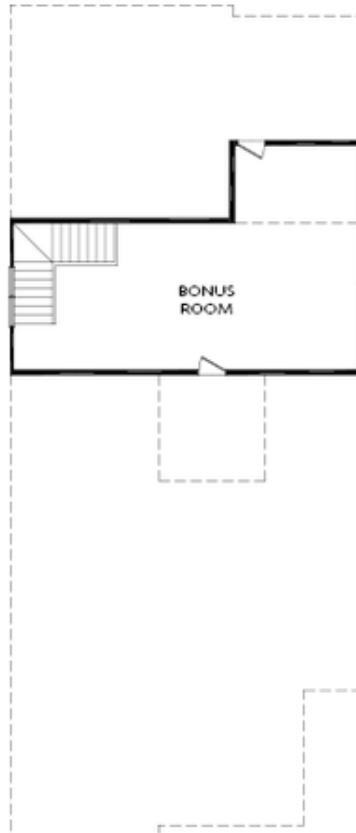
FIRST FLOOR

Elevation A

Want to Know More
About This Home?

CONTACT OUR COMMUNITY SALES MANAGER
Call Us @ 470.462.9178

OPTIONAL FLOORPLANS



OPT SECOND FLOOR

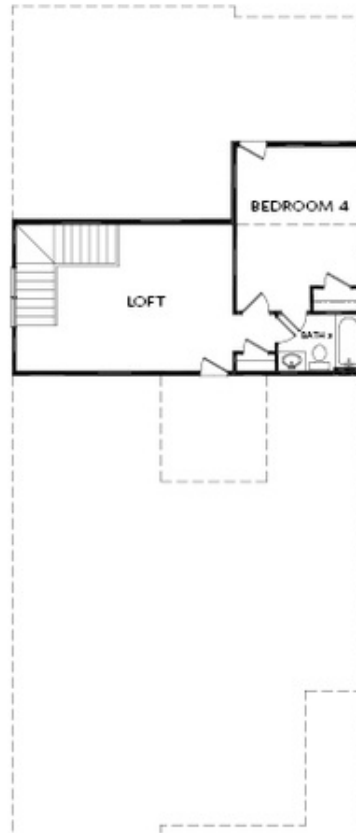
OPT Bonus Room Layout

Elevation A

Want to Know More
About This Home?

CONTACT OUR COMMUNITY SALES MANAGER
Call Us @ 470.462.9178

OPTIONAL FLOORPLANS



OPT SECOND FLOOR
OPT Bedroom 4 w. Full Bath 3 & Loft Layout

Elevation A

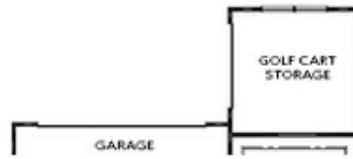
Want to Know More
About This Home?

CONTACT OUR COMMUNITY SALES MANAGER
Call Us @ 470.462.9178

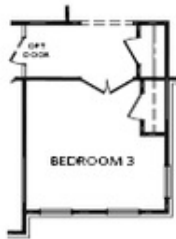
OPTIONS



Stair Layout IF OPT Second Floor



OPT Golf Cart Storage



OPT Bedroom 3 ilo Office



OPT Storage



OPT Extended Owner's W.I.C



OPT Sliding Glass Door



OPT Owner's Walk-In Shower



OPT Owner's Separate Tub/Shower

Want to Know More
 About This Home?

CONTACT OUR COMMUNITY SALES MANAGER
 Call Us @ 470.462.9178