



PRICED AT  
**\$721,880**

 **2629 Sq Ft**

 **3 Beds**

 **2.5 Baths**

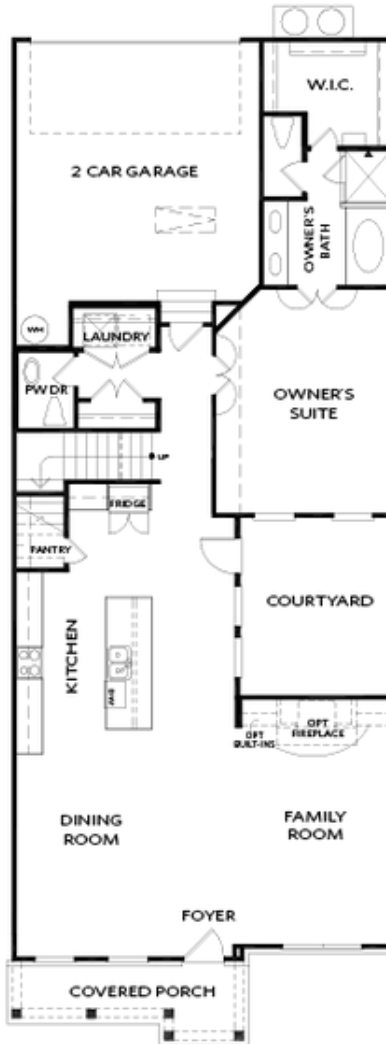
 **2 Car Garage**

 **2.0 Story**

**SPRING INTO A NEW HOME!!** Welcome to this beautifully designed 2-story home nestled on a desirable corner lot in a vibrant active adult community Promenade built by The Providence Group! From the moment you arrive, the inviting covered front porch sets the tone for comfort and style. Step inside to discover a spacious family room with a cozy gas fireplace, perfect for relaxing or entertaining. The open-concept layout creates an effortless flow as the kitchen overlooks the dining area, making gatherings feel warm and connected. Enjoy outdoor living year-round with a screened-in covered patio, ideal for morning coffee or evening unwinding. The main level features a luxurious primary suite complete with an oversized walk-in closet and a spa-inspired primary bath offering a zero-entry walk-in shower and dual vanities. A guest bath and a convenient rear-facing two-car garage add functionality to the main floor. Upstairs, you'll find two generously sized bedrooms that share a full bath, a versatile loft area, and a spacious bonus/media room—perfect for movie nights, hobbies, or a home office. This thoughtfully designed home offers comfort, style, and easy living all in one. Estimated Move-In: Sept.-October 2025. Don't miss your chance to be part of this welcoming **GATED ...**

**Want to Know More  
About This Home?**

**CONTACT OUR COMMUNITY SALES MANAGER**  
**Call Us @ 470.462.9178**

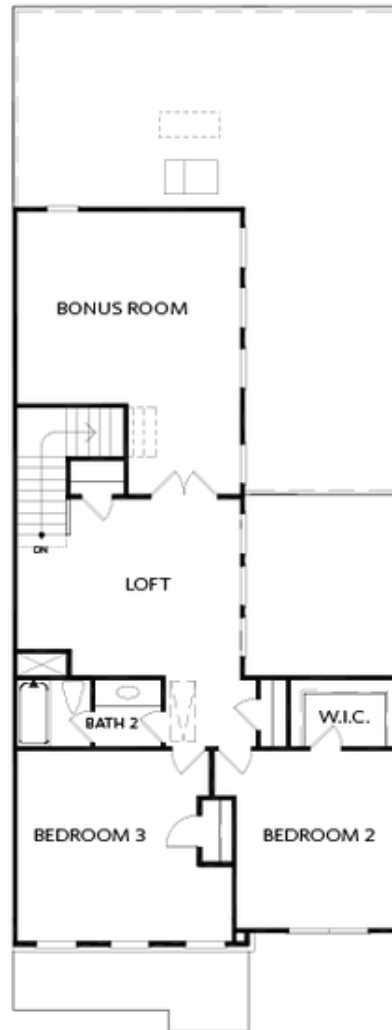


FIRST FLOOR

Elevation G

Want to Know More  
About This Home?

CONTACT OUR COMMUNITY SALES MANAGER  
Call Us @ 470.462.9178



SECOND FLOOR

Elevation G

Want to Know More  
About This Home?

CONTACT OUR COMMUNITY SALES MANAGER  
Call Us @ 470.462.9178



OPT Extended Owner's W.I.C  
 w/ Large Shower Only



OPT Slider Door



OPT Walk-In Shower ilo  
 Shower & Tub



OPT Covered Porch/  
 OPT Screened Porch



OPT Bedroom 4 w/ Bath 3  
 ilo Bonus Room

OPTIONS

Want to Know More  
 About This Home?

CONTACT OUR COMMUNITY SALES MANAGER  
 Call Us @ 470.462.9178