



PRICED AT
\$703,415

 **2500 Sq Ft**

 **3 Beds**

 **3.0 Baths**

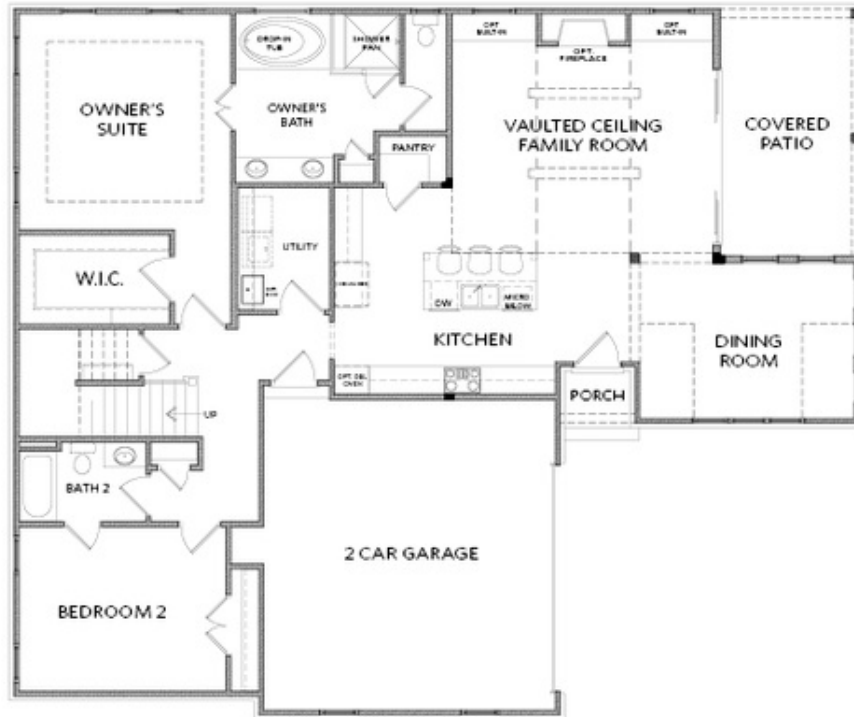
 **2 Car Garage**

 **2.0 Story**

NEW YEAR, NEW HOME NEW YOU!!! The Promenade at Sawnee Village is The Providence Groups Newest and most Anticipated Gated **ACTIVE 55+ COMMUNITY** located in Cumming, GA. Welcome home, where luxury AND Lifestyle are yours to enjoy!!! A gorgeous, gated community located just one mile from the Cumming City Center. The Providence Groups Motor Court Collection featuring **THE MILTON** floor plan. This exceptional master-on-main residence is perfectly situated on a private lot, ensuring peace and seclusion. Enter the breathtaking vaulted family room featuring soaring ceiling and abundant natural light, the family room features a direct vent fireplace. This open and expansive space flows effortlessly into the open concept Chef's Kitchen. Discover the elegance of the master-on-main suite, a luxurious retreat featuring a spacious bedroom, a spa-like ensuite bathroom with dual vanities, a huge walk-in shower with drying area. The suite also includes a large walk-in closet and serene views & a door leading out to the covered patio. This provides the perfect blend of comfort and convenience. The home does not end there, and additional bedroom, full bathroom and media room is on the second level along with additional storage space in the foamed insulated attic. Your entertainment options continue ...

**Want to Know More
About This Home?**

CONTACT OUR COMMUNITY SALES MANAGER
Call Us @ 470.462.9178

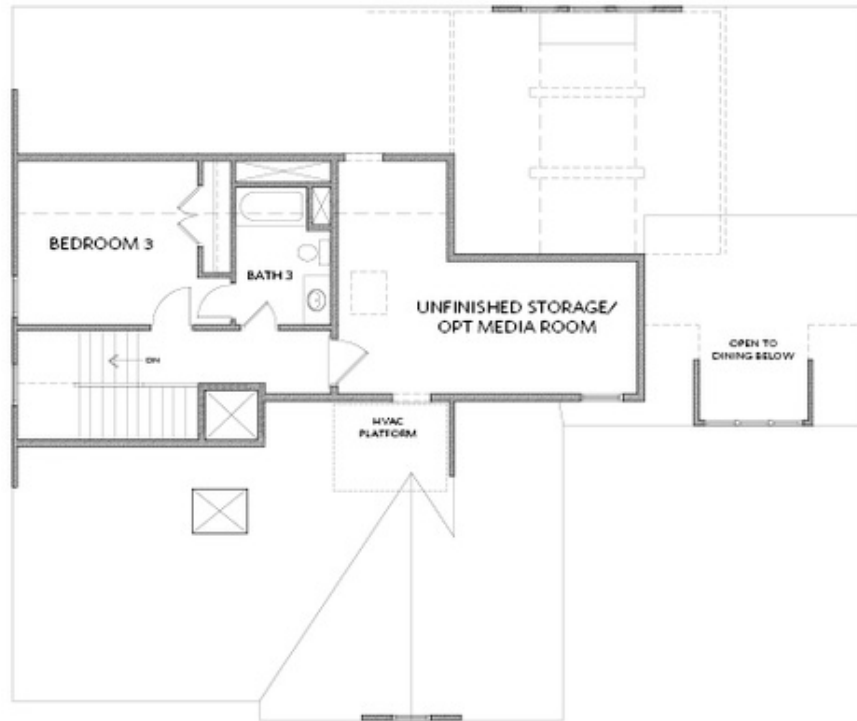


FIRST FLOOR

Elevation A

Want to Know More
About This Home?

CONTACT OUR COMMUNITY SALES MANAGER
Call Us @ 470.462.9178



SECOND FLOOR

Elevation A

Want to Know More
About This Home?

CONTACT OUR COMMUNITY SALES MANAGER
Call Us @ 470.462.9178