



PRICED AT  
**\$695,565**

 **2579 Sq Ft**

 **3 Beds**

 **3.0 Baths**

 **2 Car Garage**

 **2.0 Story**

**SPRING INTO A NEW HOME!!!** Come see The Providence Groups Newest and most Anticipated Gated **ACTIVE 55+ COMMUNITY!!** Conveniently located in Cumming just around the corner from the Cumming City Center and GA 400. Our Lassiter floorplan features a covered front porch overlooking one community park. Raised foyer leading into Chef's Kitchen with plenty of cabinets, oversized kitchen island, stainless steel appliances and gleaming hardwoods overlooking Dining Area. Family room with cozy gas Fireplace opens to Covered Patio with professionally landscaped and HOA maintained Yard that is fully fenced. You will find Spacious Owner's Suite on Main with large Walk-in Closet and Spa-like Bath featuring stand alone tub, walk-in shower & double vanities. Another full Bedroom with Full bath on main with walk-in shower is perfect as guest or in-law en-Suite. Second floor is conveniently set up with another Bedroom and Full Bath as well as spacious Media Room. Plenty of unfinished storage in walk-in Attic. Still time to personalize this home by selecting interior Design Selections at our state of the art Design Studio! 2 Car Garage and plenty of guest parking in the community. Estimated move-in: Summer 2025. Discover the epitome of active adult living in this vibrant ...

**Want to Know More  
About This Home?**

**CONTACT OUR COMMUNITY SALES MANAGER**  
**Call Us @ 470.462.9178**

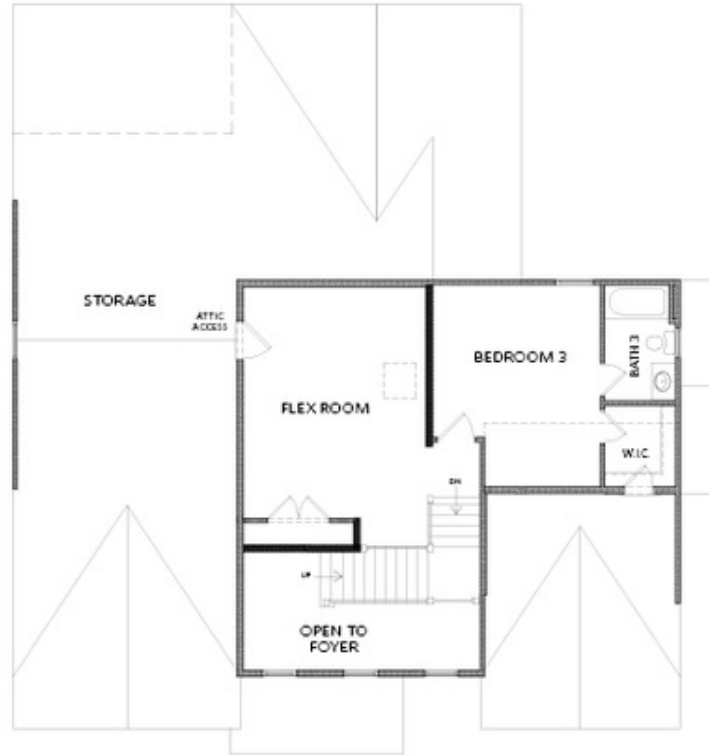


FIRST FLOOR

Elevation A

Want to Know More  
About This Home?

CONTACT OUR COMMUNITY SALES MANAGER  
Call Us @ 470.462.9178

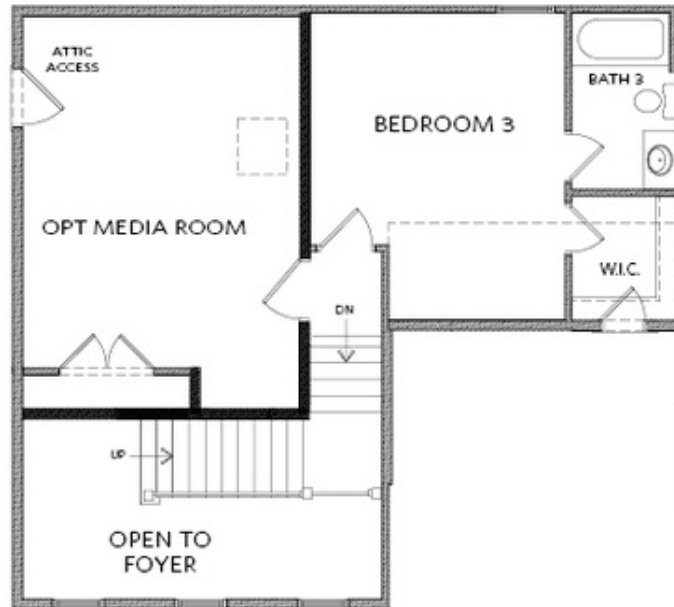


SECOND FLOOR

Elevation A

Want to Know More  
About This Home?

CONTACT OUR COMMUNITY SALES MANAGER  
Call Us @ 470.462.9178



OPT Media Room ilo Flex Room

Want to Know More  
About This Home?

CONTACT OUR COMMUNITY SALES MANAGER  
Call Us @ 470.462.9178