




PRICED AT
\$711,470

 2221 Sq Ft

 3 Beds

 3.0 Baths

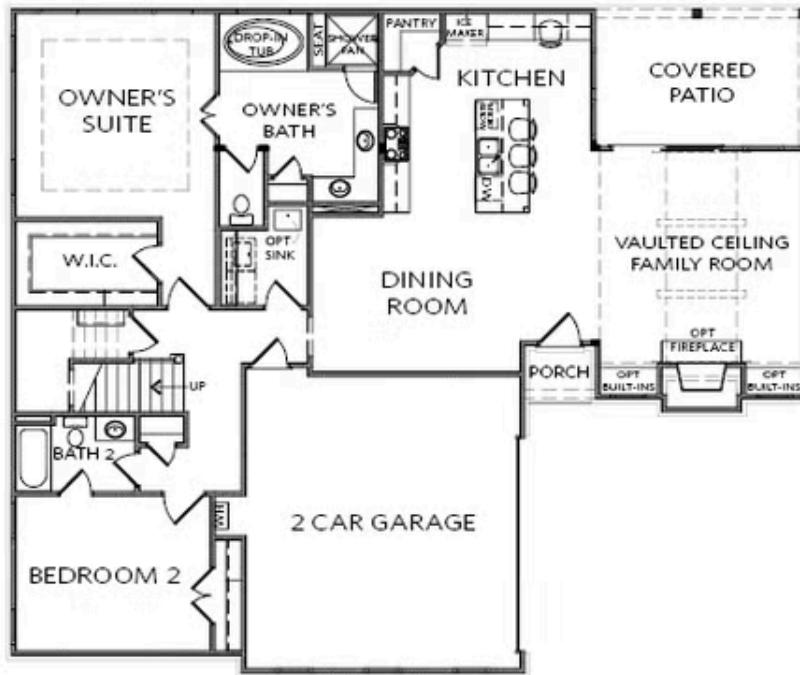
 2 Car Garage

 2.0 Story

Fall Into Savings with \$20K. Personalize Your Space with Your Style – use it toward low rates, upgrades, appliances, closing costs & more. Ends November 30, 2025 The Promenade at Sawnee Village is a community conveniently located just minutes from GA 400, the City of Cumming, the Cumming City Center, Lake Lanier and the Northside Hospital of Forsyth. Discover the epitome of active adult living in this vibrant 55+ community. Nestled in a serene setting, this meticulously planned neighborhood offers a range of amenities tailored to the needs and preferences of its residents. Enjoy leisurely strolls along the sidewalk throughout the neighborhood, visit the many pocket parks or dog park, socialize with neighbors at the clubhouse which hosts a catering kitchen, exercise room, gathering space with 2 fireplaces or the clubhouse grounds which features a swimming pool, fire pits, pickleball courts. HOA monthly dues include lawn maintenance which allows you plenty of time to enjoy all the finer moments of this elevated lifestyle. Pictures are for representation purposes only and are not of actual home. This gorgeous community will have a total of 221 homesites, all with the primary bedroom located on the main floor for ultimate convenience. The Jordan ...

Want to Know More
About This Home?

CONTACT OUR COMMUNITY SALES MANAGER
Call Us @ 470.462.9178



FIRST FLOOR

Elevation A

Want to Know More
About This Home?

CONTACT OUR COMMUNITY SALES MANAGER
Call Us @ 470.462.9178

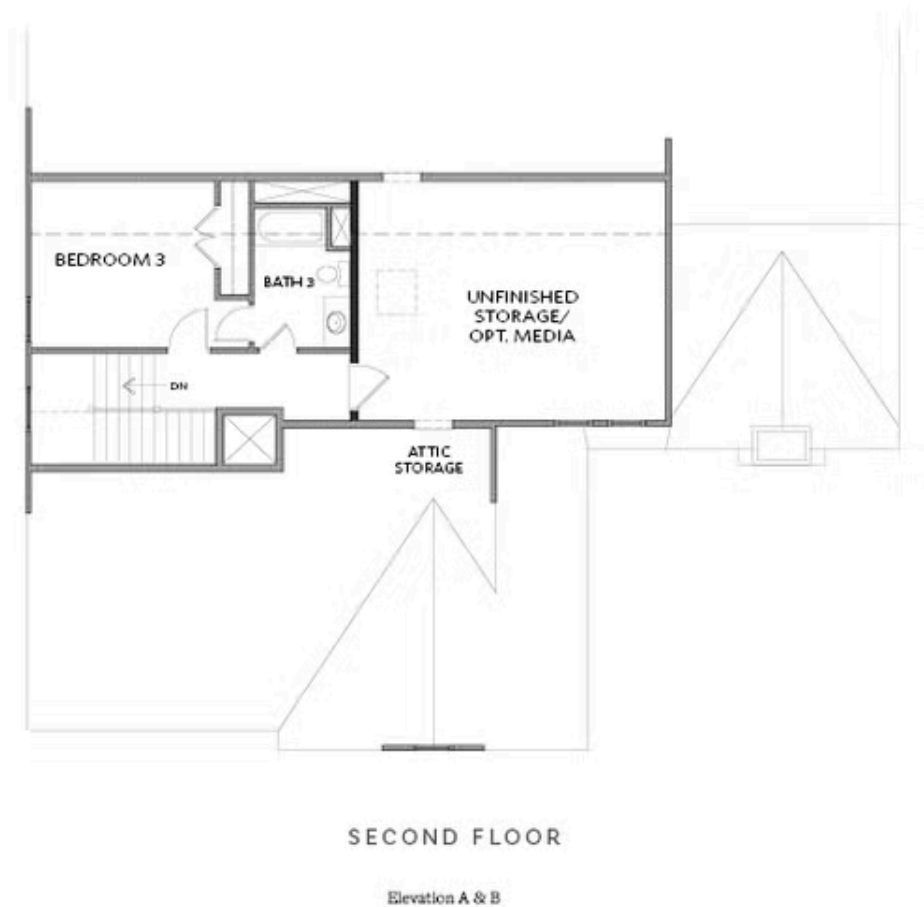


FIRST FLOOR

Elevation B

Want to Know More
About This Home?

CONTACT OUR COMMUNITY SALES MANAGER
Call Us @ 470.462.9178



Want to Know More
About This Home?

CONTACT OUR COMMUNITY SALES MANAGER
Call Us @ 470.462.9178