



PRICED AT  
**\$667,030**

 **2221 Sq Ft**

 **3 Beds**

 **3.0 Baths**

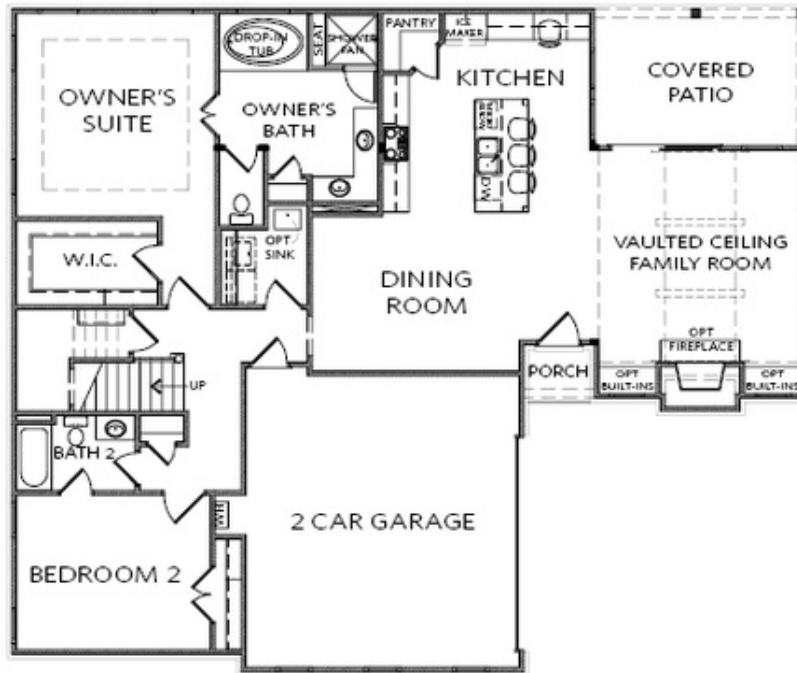
 **2 Car Garage**

 **2.0 Story**

**SPRING INTO A NEW HOME!!** If you have been searching for the perfect home in a perfect 55+ ACTIVE COMMUNITY, The Providence Groups Newest and most Anticipated Gated ACTIVE 55+ COMMUNITY is now available. The Promenade at Sawnee Village is a community conveniently located just minutes from GA 400, the City of Cumming, the Cumming City Center, Lake Lanier and the Northside Hospital of Forsyth. Discover the epitome of active adult living in this vibrant 55+ community. Nestled in a serene setting, this meticulously planned neighborhood offers a range of amenities tailored to the needs and preferences of its residents. Enjoy leisurely strolls along the sidewalk throughout the neighborhood, visit the many pocket parks or dog park, socialize with neighbors at the clubhouse which hosts a catering kitchen, exercise room, gathering space with 2 fireplaces or the clubhouse grounds which features a swimming pool, fire pits, pickleball courts. HOA monthly dues include lawn maintenance which allows you plenty of time to enjoy all the finer moments of this elevated lifestyle. Pictures are for representation purposes only and are not of actual home. This gorgeous community will have a total of 221 homesites, all with the primary bedroom located on the main ...

**Want to Know More  
About This Home?**

**CONTACT OUR COMMUNITY SALES MANAGER**  
**Call Us @ 470.462.9178**

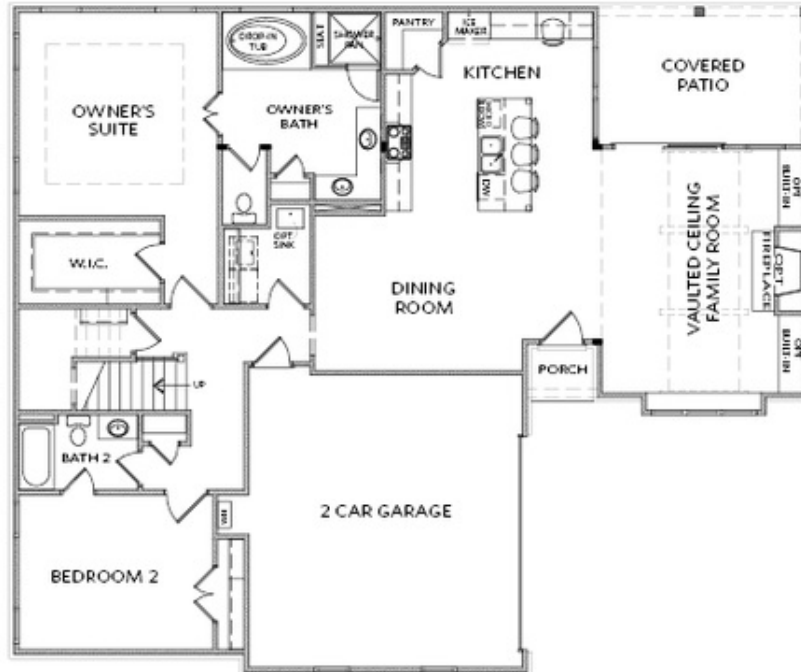


FIRST FLOOR

Elevation A

Want to Know More  
About This Home?

CONTACT OUR COMMUNITY SALES MANAGER  
Call Us @ 470.462.9178

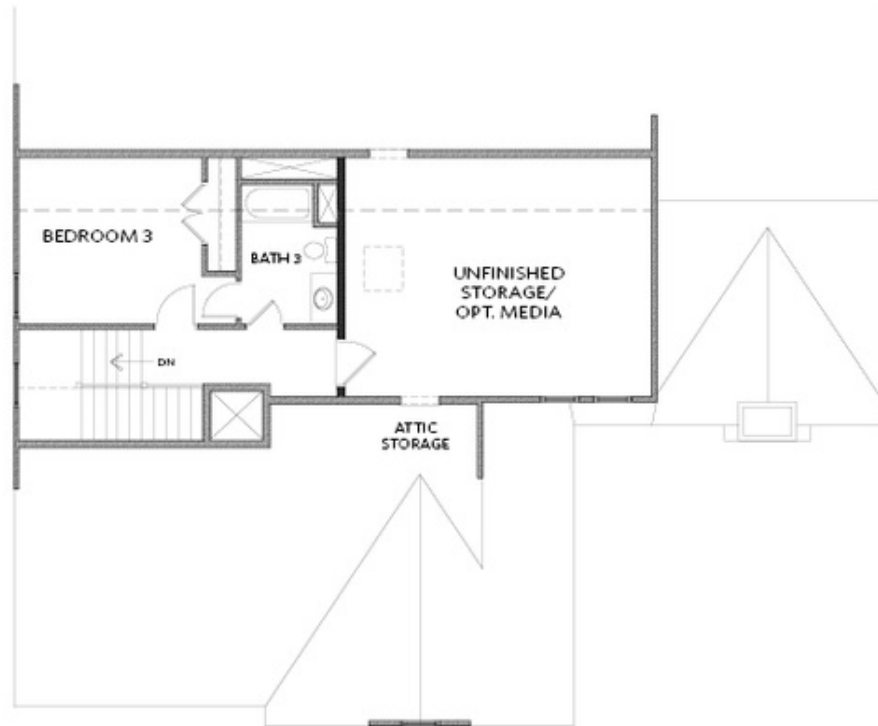


FIRST FLOOR

Elevation B

Want to Know More  
About This Home?

CONTACT OUR COMMUNITY SALES MANAGER  
Call Us @ 470.462.9178



SECOND FLOOR

Elevation A & B

Want to Know More  
About This Home?

CONTACT OUR COMMUNITY SALES MANAGER  
Call Us @ 470.462.9178