



PRICED AT
\$700,035

 2221 Sq Ft

 3 Beds

 3.0 Baths

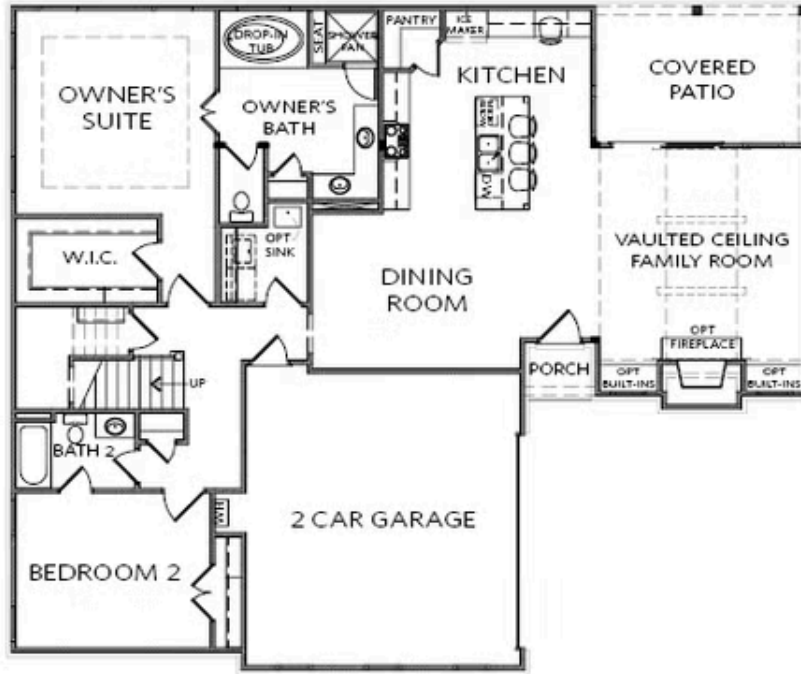
 2 Car Garage

 2.0 Story

Elevate your savings with \$20,000 promotion to be applied towards closing costs, option buydown or off price of home for contract written in March 2026. The Providence Group proudly presents our newest 55+ACTIVE ADULT COMMUNITY located in the heart of Cumming, GA. This beautiful new under construction home, located in a vibrant 55+ active adult community, offers the perfect blend of comfort, style, and flexibility. Featuring spacious 3-bedroom, 3-bath. The main floor includes a luxurious primary bedroom with a private bath, free standing tub and shower and walk-in closet, while the second en-suite bedroom offers versatility—perfect for a guest room or home office on main w connected bath and walk in shower. Both rooms are thoughtfully designed with convenience in mind. The laundry room with upper cabinets and laundry sink is also conveniently located on main floor. The open family room, with its cozy fireplace has vaulted ceilings and flows seamlessly into the dining area and modern kitchen, ideal for both casual and formal gatherings. Every home comes with premium GE appliances to complete your chef's kitchen. Upstairs, a versatile loft and additional bedroom with a full bath provide extra space for guests or hobbies. Enjoy resort-style amenities exclusively available ...

**Want to Know More
About This Home?**

CONTACT OUR COMMUNITY SALES MANAGER
Call Us @ 470.462.9178



FIRST FLOOR

Elevation A

Want to Know More
About This Home?

CONTACT OUR COMMUNITY SALES MANAGER
Call Us @ 470.462.9178

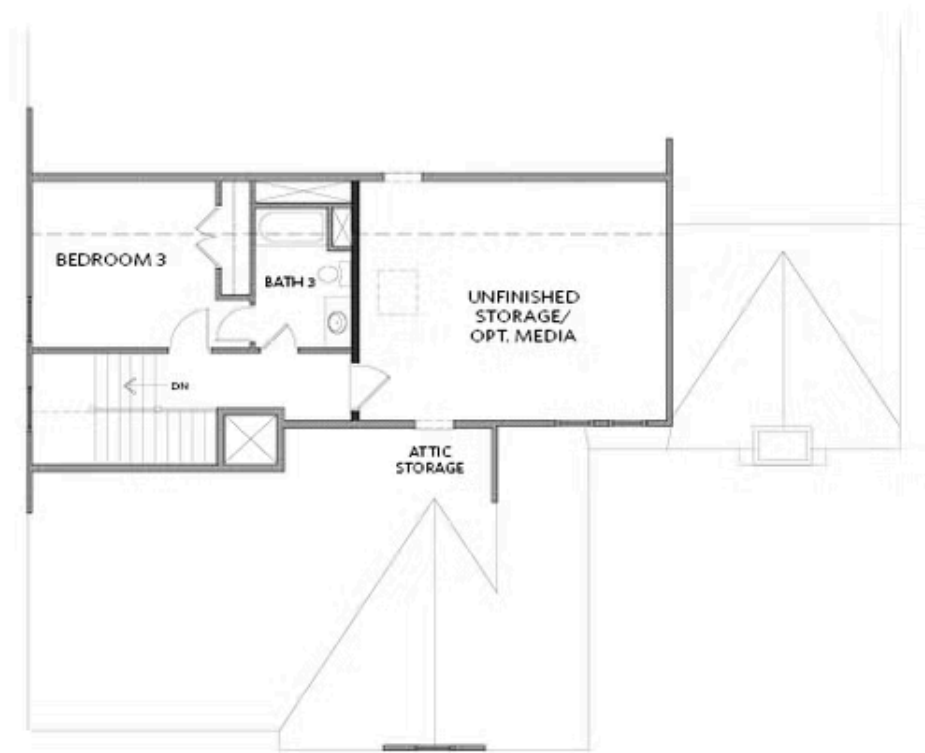


FIRST FLOOR

Elevation B

Want to Know More
About This Home?

CONTACT OUR COMMUNITY SALES MANAGER
Call Us @ 470.462.9178



SECOND FLOOR

Elevation A & B

Want to Know More
About This Home?

CONTACT OUR COMMUNITY SALES MANAGER
Call Us @ 470.462.9178