



PRICED AT
\$619,900

 1797 Sq Ft

 3 Beds

 2.0 Baths

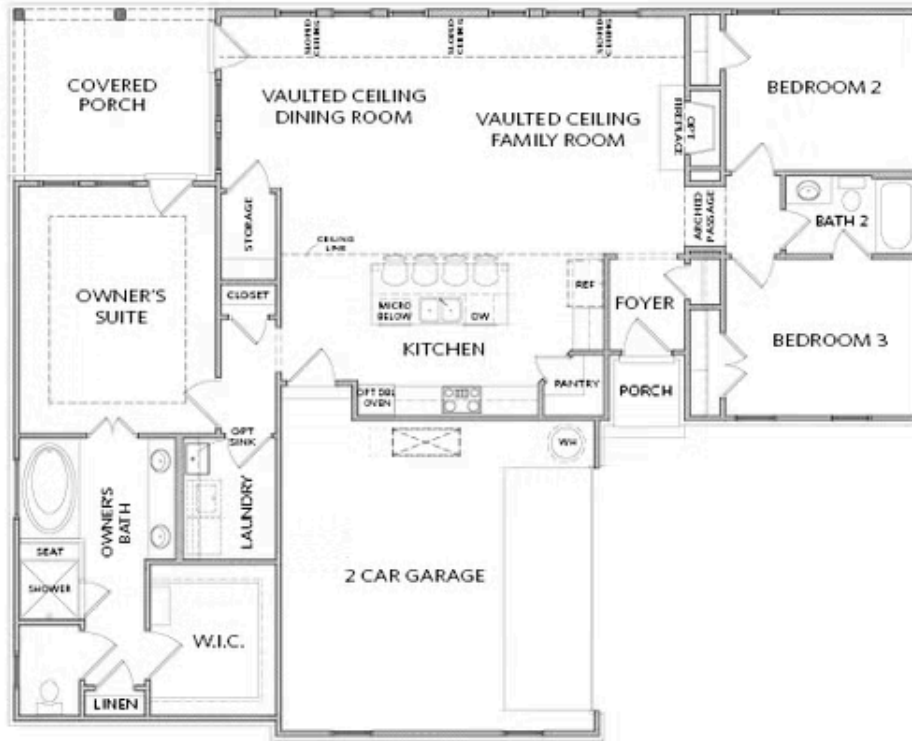
 2 Car Garage

 1.0 Story

The Providence Group proudly presents our newest 55+ACTIVE ADULT COMMUNITY located in the heart of Cumming, GA. Come see this gorgeous home, the Lawrence, part of our Motor Court collection. The Lawrence RANCH plan is a spacious floorplan featuring 3 bedrooms and 2 baths. The primary bedroom is conveniently located on the main floor and features a spa like walk in shower with shower head, rain shower and handheld features. His and her vanities...large walk-in closet. The kitchen is large with plenty of cabinet space, a huge island great for prep work or casual dining. Quartz countertops, stainless Steel appliances, under cabinet lighting are just a few of the beautiful finishes in this home. Custom pendant lighting. The kitchen is open to the cozy family room. There is also a second and third bedroom on the main floor with a bathroom in between, great for visiting family or friends. The laundry room with upper cabinets and laundry sink is also conveniently located on main floor and includes a washer and dryer. Upstairs, a versatile loft and additional bedroom with a full bath provide extra space for guests or hobbies. Enjoy resort-style amenities exclusively available to community residents - such as ...

**Want to Know More
About This Home?**

CONTACT OUR COMMUNITY SALES MANAGER
Call Us @ 470.462.9178

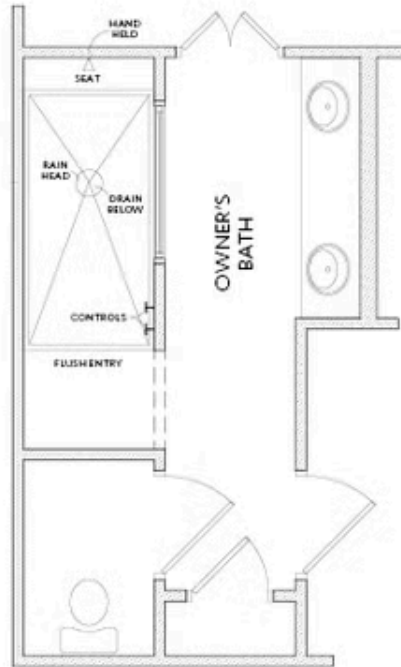


FLOOR PLAN

Elevation A

Want to Know More
About This Home?

CONTACT OUR COMMUNITY SALES MANAGER
Call Us @ 470.462.9178



OPT Walk-In Shower
No Tub & Shower

OPTIONS

Elevation A

Want to Know More
About This Home?

CONTACT OUR COMMUNITY SALES MANAGER
Call Us @ 470.462.9178