

PRICED AT  
**\$857,055**

 2545 Sq Ft

 3 Beds

 3.5 Baths

 2 Car Garage

 2.0 Story

NEW HOME, NEW YEAR!!- Build your Savings and Unwrap the Joy of a New Home with \$30,000 Promotion! Promotion is already applied towards a price reduction reflected in this listing. MOVE IN READY Welcome to Sawnee Village - Promenade, a highly sought-after 55+ active adult community nestled in the heart of Cumming! This Bullard Plan, located on a desirable lot across from the community park, is now available with a Quick Move-In opportunity! As you arrive, a charming covered front porch warmly welcomes you—setting the tone for the comfort and hospitality found inside. Step into a thoughtfully designed floor plan that perfectly blends style and functionality. The main level features a spacious kitchen and breakfast spot—perfect for culinary adventures and casual gatherings—overlooking a cozy family room with a gas fireplace and an separated dining room with a beautiful trim wall ideal for hosting unforgettable meals with friends and family. Step outside to enjoy a covered patio —plenty of space for entertaining, with the added convenience of HOA-maintained landscaping. The main-level Owner's Suite is a peaceful retreat, complete with dual vanities, a walk-in closet, and a zero-entry shower and free standing tub all designed for ease and comfort. Upstairs includes 2 ...

**Want to Know More  
About This Home?**

CONTACT OUR COMMUNITY SALES MANAGER  
Call Us @ 470.462.9178

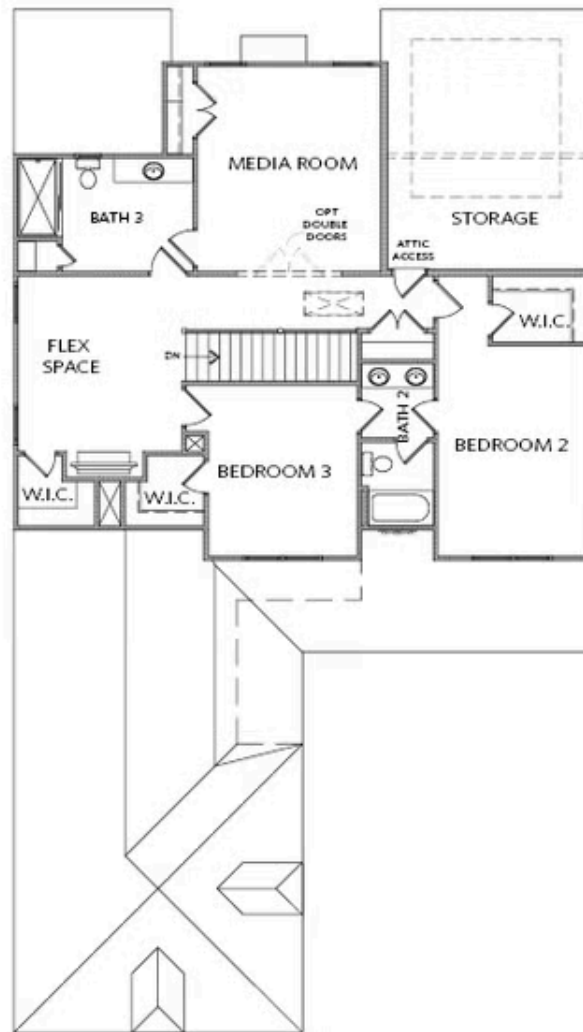


FIRST FLOOR

Elevation A

Want to Know More  
About This Home?

CONTACT OUR COMMUNITY SALES MANAGER  
Call Us @ 470.462.9178

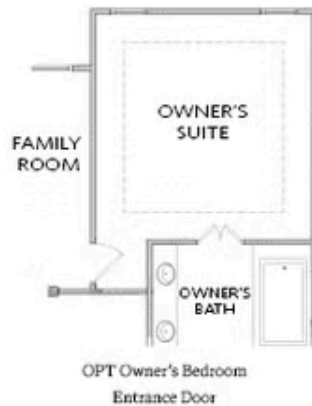


SECOND FLOOR

Elevation A

Want to Know More  
About This Home?

CONTACT OUR COMMUNITY SALES MANAGER  
Call Us @ 470.462.9178



FIRST FLOOR



SECOND FLOOR

OPTIONS

Want to Know More  
About This Home?

CONTACT OUR COMMUNITY SALES MANAGER  
Call Us @ 470.462.9178