




PRICED AT
\$680,525

 2300 Sq Ft

 3 Beds

 3.0 Baths

 2 Car Garage

 2.0 Story

Come visit The Promenade a new 55+ ACTIVE ADULT COMMUNITY, right in the heart of Cumming, Ga. Location, location, location!! This community is nestled at the foot of the Sawnee Mountains, 1.5 miles from the City Center featuring restaurants, retail and entertainment!! Lake Lanier is just around the corner for our water enthusiasts!! GA 400 brings you to the community and also features an array of dining, shopping, and the Northside Hospital is right there!! This exceptional two-story ranch plan to be built, is perfectly situated on a private lot, ensuring peace and seclusion. As you enter, you will be greeted by a foyer that flows into an open-concept living space. Retreat to the luxurious main-level suite, a sanctuary of comfort and style. This private haven includes a generous bedroom, a lavish ensuite bath with extended walk-in shower with zero entry. There is another spacious secondary bedroom with a private ensuite bathroom for guests/or could be a home office. Great loft space and bedroom on second floor. Tons of attic storage in conditioned space. WHILE IT LASTS....You can still make all the design selections on this beautiful home. You will experience our fabulous design studio experience!! Step outside to your ...

**Want to Know More
About This Home?**

CONTACT OUR COMMUNITY SALES MANAGER
Call Us @ 470.462.9178

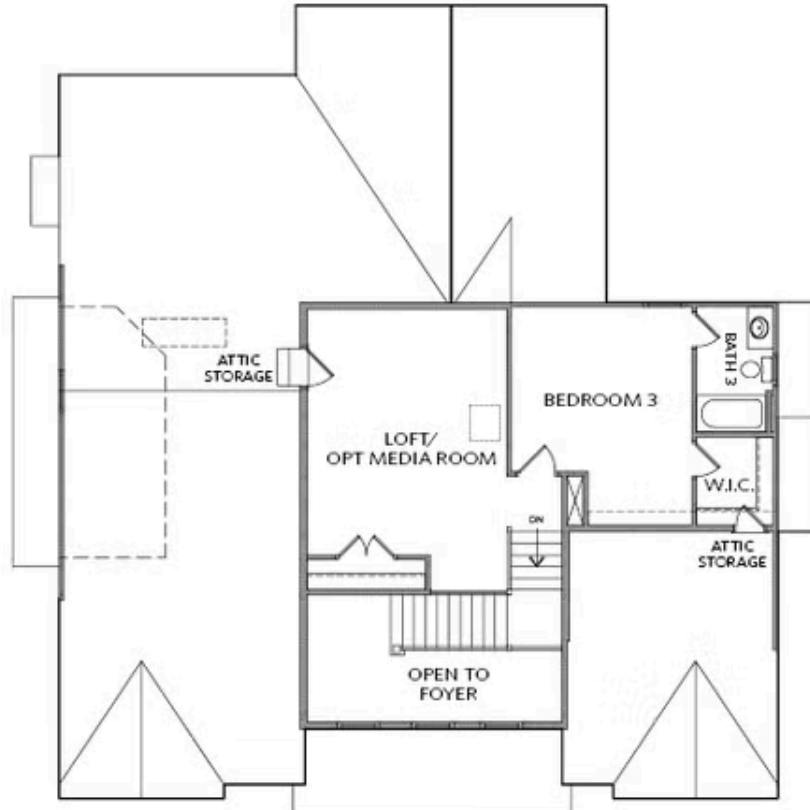


FIRST FLOOR

Elevation A

Want to Know More
About This Home?

CONTACT OUR COMMUNITY SALES MANAGER
Call Us @ 470.462.9178



SECOND FLOOR

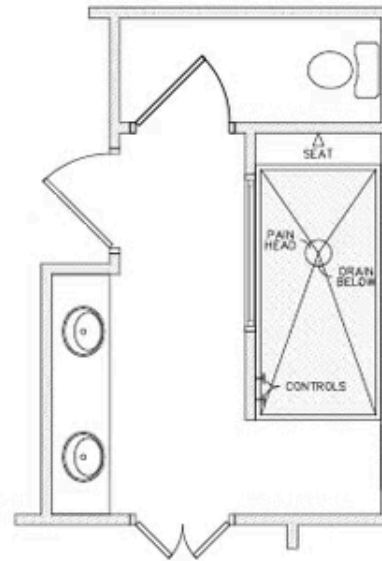
Elevation A

Want to Know More
About This Home?

CONTACT OUR COMMUNITY SALES MANAGER
Call Us @ 470.462.9178



OPT Media Room ilo Loft



OPT Owner's Walk-in Shower
ilo Tub & Shower

OPTIONS

Want to Know More
About This Home?

CONTACT OUR COMMUNITY SALES MANAGER
Call Us @ 470.462.9178