




PRICED FROM
\$671,900

 2,599 - 2,640 Sq Ft

 4 Beds

 3.5 Baths

 2 Car Garage

 2.0 Story

- Open, Bright Floor Plan Layout
- Family Room and Formal Dining Room are just off the Foyer
- Large Kitchen Overlooking the Breakfast Area
- Great Views to Side Courtyard from Kitchen and Breakfast Room
- Grand Double Doors Open up to the Inviting Owner's Suite with a Large Walk-In Closet
- Owner's Bath as a 2-Sink Shared Vanity, a Soaking Tub with a Separate Shower
- Loft/Media Room on Upper Level

[Read More Online](#)

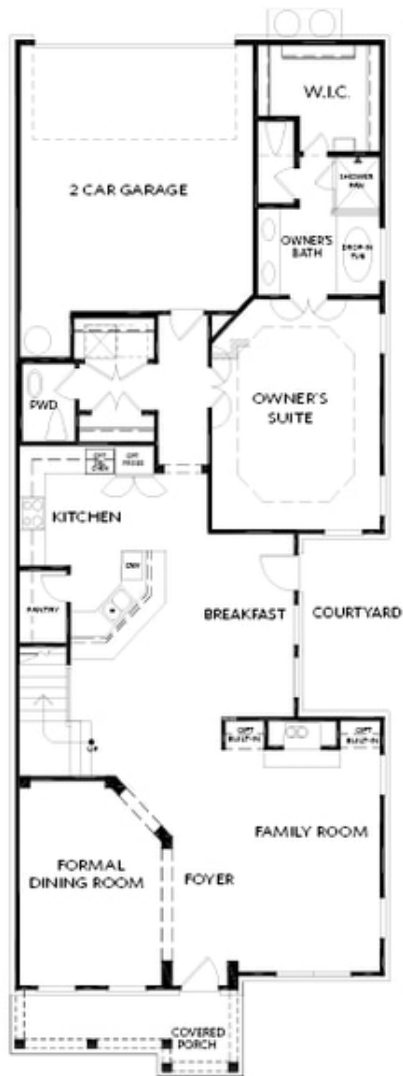
Available Elevations



Elevation G



Elevation H



FIRST FLOOR

Elevation G

**Want to Know More
About This Home?**

CONTACT OUR COMMUNITY SALES MANAGER
Call Us @ 470.462.9178



SECOND FLOOR

Elevation G

**Want to Know More
About This Home?**

CONTACT OUR COMMUNITY SALES MANAGER
Call Us @ 470.462.9178