



PRICED FROM
\$582,400

 **1,797 Sq Ft**

 **3 Beds**

 **2 Baths**

 **2 Car Garage**

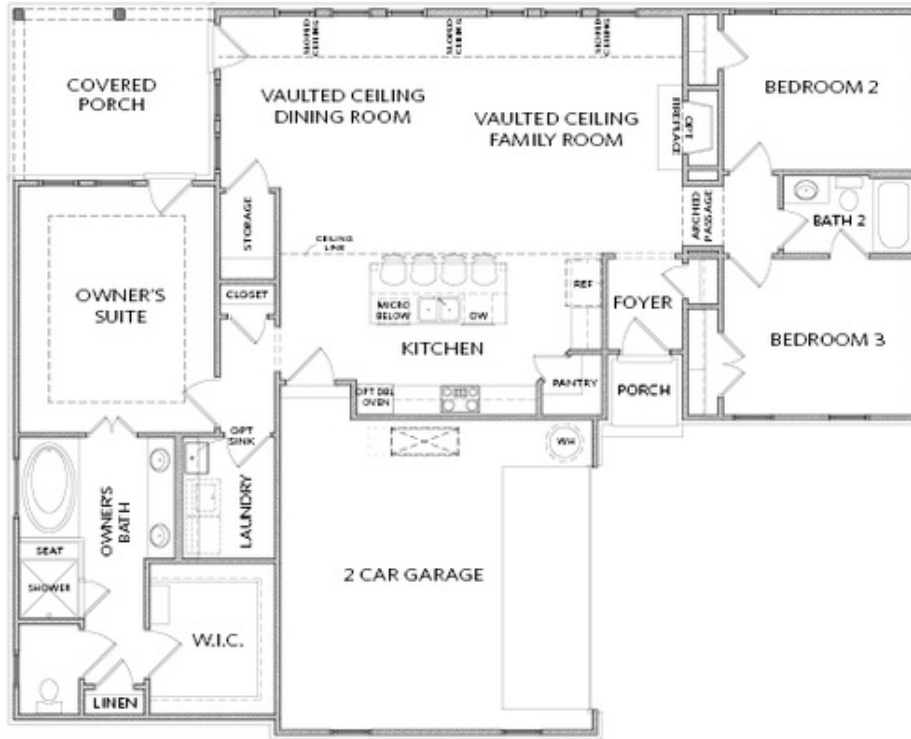
 **1.0 Story**

- **Covered Patio with Private Access from Family Room & Owner's suite**
- **Grand Main Level with Kitchen Overlooking Vaulted Ceiling Dining Room and Family Room**
- **2-Story Dining Room and Family Room**
- **Massive Kitchen Island that Accommodates 4 Seats**
- **Owner's Retreat Features Double Doors at Bath Entry, Large Walk-In Closet, Separate Tub & Shower, Dual Vanity, and Linen Closet**
- **Two Secondary Bedrooms on the main with a Connecting Full Bath**
- **2-Car Garage**

[Read More Online](#)

Available Elevations



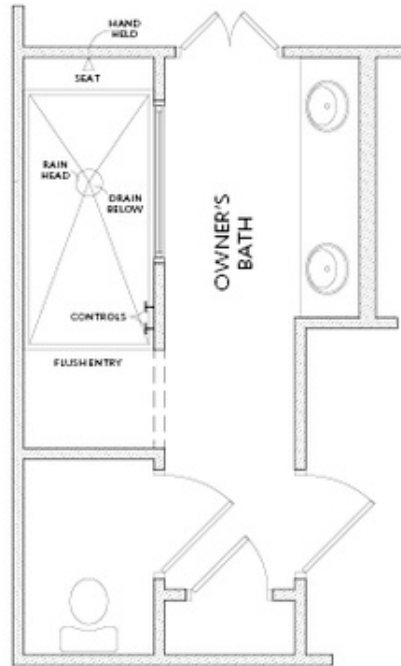


FLOOR PLAN

Elevation A

Want to Know More
About This Home?

CONTACT OUR COMMUNITY SALES MANAGER
Call Us @ 470.462.9178



OPT Walk-In Shower
No Tub & Shower

OPTIONS

Elevation A

Want to Know More
About This Home?

CONTACT OUR COMMUNITY SALES MANAGER
Call Us @ 470.462.9178