



PRICED FROM
\$645,900

 **1,961 - 2,583 Sq Ft**

 **2 - 4 Beds**

 **2.5 - 3.5 Baths**

 **2 Car Garage**

 **1.0 - 2.0 Story**

- **Ranch Style Home Design**
- **Owner's Suite and Private Bath with Dual Vanities, Walk-In Shower and Large Walk-In Closet with Easy Access to Laundry Room**
- **Spacious Kitchen with Pantry and Island overlooking the Dining Room and Family Room**
- **Patio off the Family Room has a Covered area as well as an Exposed Area**
- **Secondary Bedroom, Full Bath and Office or Optional Third Bedroom**
- **Optional Second Floor with 2 Optional Layouts: Bonus Room or Loft with a Bedroom and Full Bath**

[Read More Online](#)

Available Elevations



Elevation A



Elevation B



Elevation C



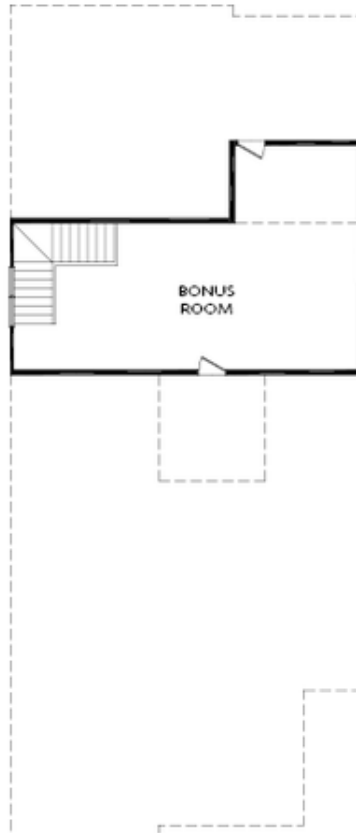
FIRST FLOOR

Elevation A

Want to Know More
About This Home?

CONTACT OUR COMMUNITY SALES MANAGER
Call Us @ 470.462.9178

OPTIONAL FLOORPLANS



OPT SECOND FLOOR

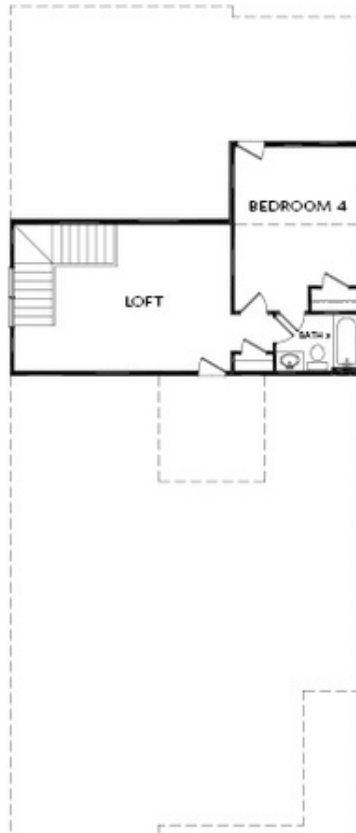
OPT Bonus Room Layout

Elevation A

Want to Know More
About This Home?

CONTACT OUR COMMUNITY SALES MANAGER
Call Us @ 470.462.9178

OPTIONAL FLOORPLANS



OPT SECOND FLOOR
OPT Bedroom 4 w. Full Bath 3 & Loft Layout

Elevation A

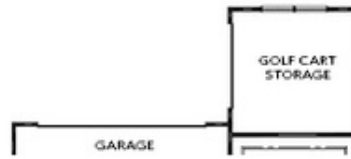
Want to Know More
About This Home?

CONTACT OUR COMMUNITY SALES MANAGER
Call Us @ 470.462.9178

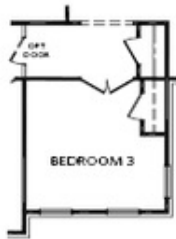
OPTIONS



Stair Layout IF OPT Second Floor



OPT Golf Cart Storage



OPT Bedroom 3 ilo Office



OPT Storage



OPT Extended Owner's W.I.C.



OPT Sliding Glass Door



OPT Owner's Walk-In Shower



OPT Owner's Separate Tub/Shower

Want to Know More
 About This Home?

CONTACT OUR COMMUNITY SALES MANAGER
 Call Us @ 470.462.9178