



PRICED FROM  
**\$645,900**

 1,961 - 2,583 Sq Ft

 2 - 4 Beds

 2.5 - 3.5 Baths

 2 Car Garage

 1.0 - 2.0 Story

- Ranch Style Home Design
- Owner's Suite and Private Bath with Dual Vanities, Walk-In Shower and Large Walk-In Closet with Easy Access to Laundry Room
- Spacious Kitchen with Pantry and Island overlooking the Dining Room and Family Room
- Patio off the Family Room has a Covered area as well as an Exposed Area
- Secondary Bedroom, Full Bath and Office or Optional Third Bedroom
- Optional Second Floor with 2 Optional Layouts: Bonus Room or Loft with a Bedroom and Full Bath

[Read More Online](#)

## Available Elevations





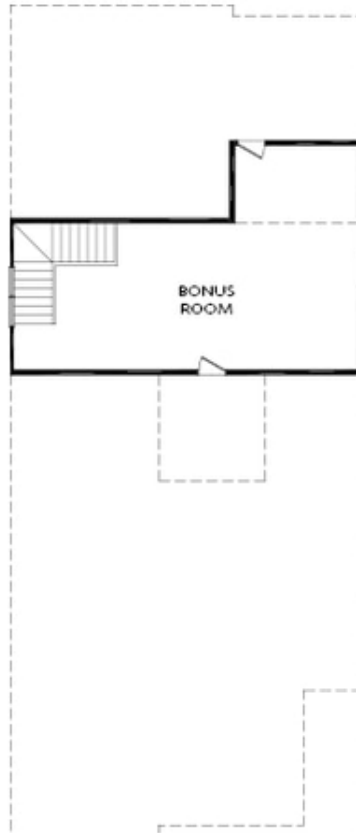
FIRST FLOOR

Elevation A

**Want to Know More  
About This Home?**

CONTACT OUR COMMUNITY SALES MANAGER  
Call Us @ 470.462.9178

OPTIONAL FLOORPLANS



OPT SECOND FLOOR

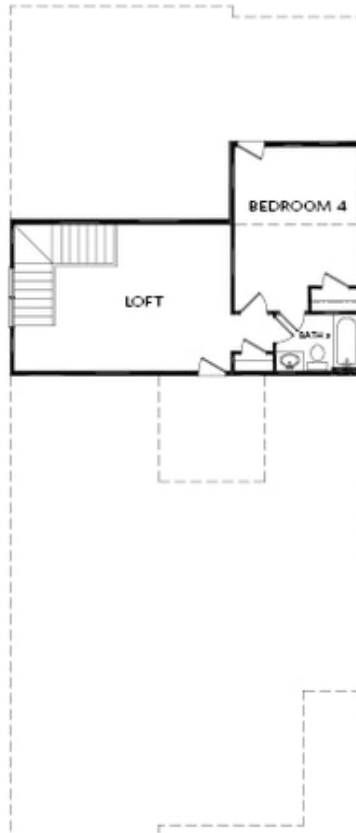
OPT Bonus Room Layout

Elevation A

**Want to Know More  
About This Home?**

CONTACT OUR COMMUNITY SALES MANAGER  
Call Us @ 470.462.9178

OPTIONAL FLOORPLANS



**OPT SECOND FLOOR**  
OPT Bedroom 4 w. Full Bath 3 & Loft Layout

Elevation A

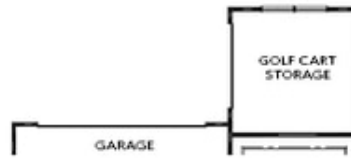
**Want to Know More  
About This Home?**

CONTACT OUR COMMUNITY SALES MANAGER  
Call Us @ 470.462.9178

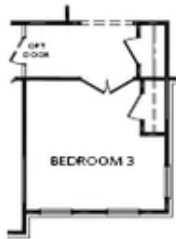
OPTIONS



Stair Layout IF OPT Second Floor



OPT Golf Cart Storage



OPT Bedroom 3 into Office



OPT Storage



OPT Extended Owner's W.I.C.



OPT Sliding Glass Door



OPT Owner's Walk-In Shower



OPT Owner's Separate Tub/Shower

**Want to Know More  
 About This Home?**

CONTACT OUR COMMUNITY SALES MANAGER  
 Call Us @ 470.462.9178