



PRICED FROM
\$614,900

 2,264 Sq Ft

 3 Beds

 3 Baths

 2 Car Garage

 2.0 Story

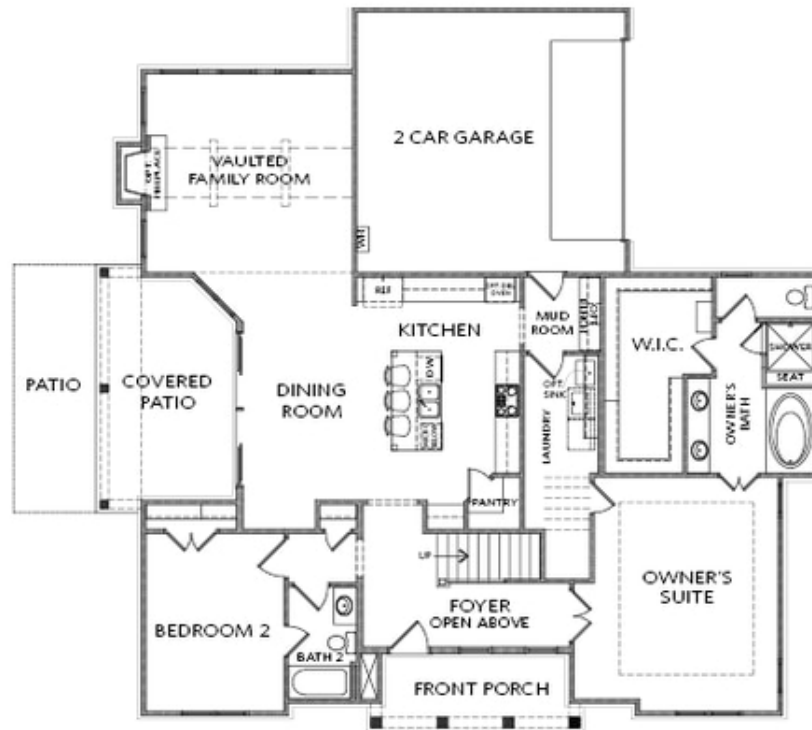
- Entertainment Main Level with the L-Shaped Kitchen with 3-Seat Island Overlooking the Dining Area that Opens up to a Covered Patio by a Large Sliding Glass Door
- The Vaulted Ceiling Family Room is Adjacent to the Dining Room and Covered Patio
- Owner's Retreat Features a Massive Walk-In Closet, Separate Tub & Shower, and Dual Vanity
- Laundry Room is Just Outside the Owner's Suite
- Mud Room with Optional Built-Ins off the Garage
- Guest Suite with Full Bath on the Main
- Bedroom 3 with Full Bath and Media Room on the Second Floor

[Read More Online](#)

Available Elevations



Elevation A

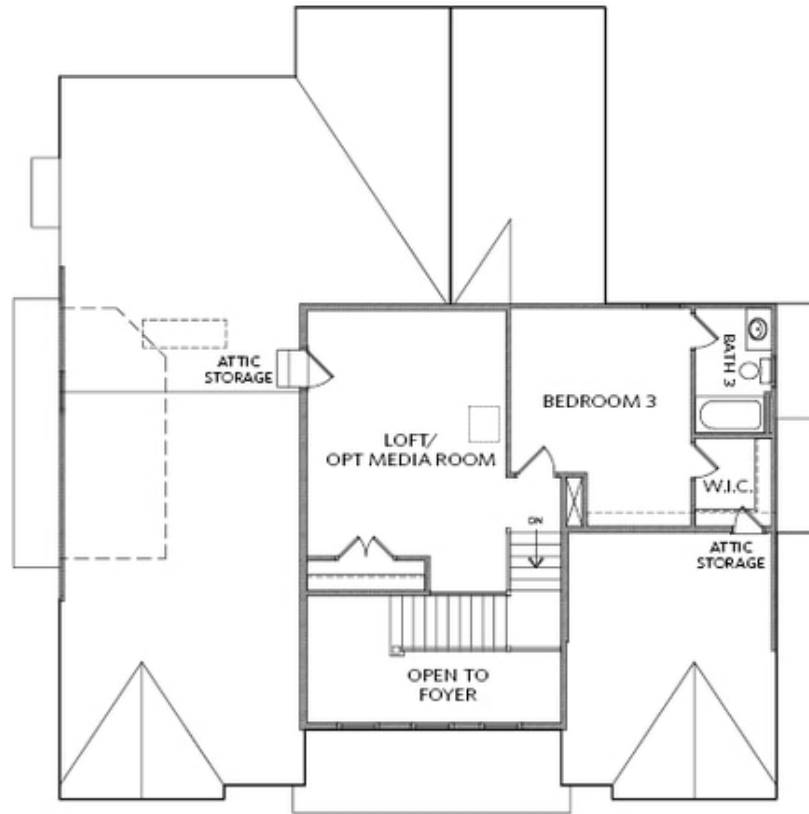


FIRST FLOOR

Elevation A

**Want to Know More
About This Home?**

CONTACT OUR COMMUNITY SALES MANAGER
Call Us @ 470.462.9178

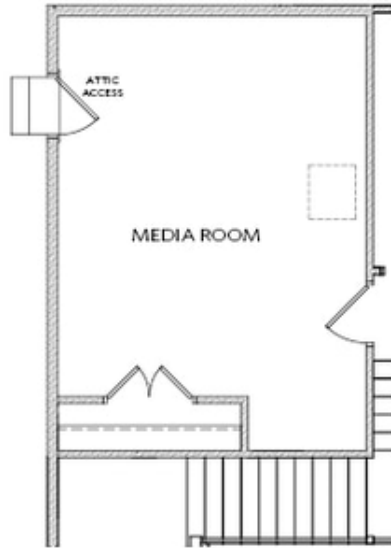


SECOND FLOOR

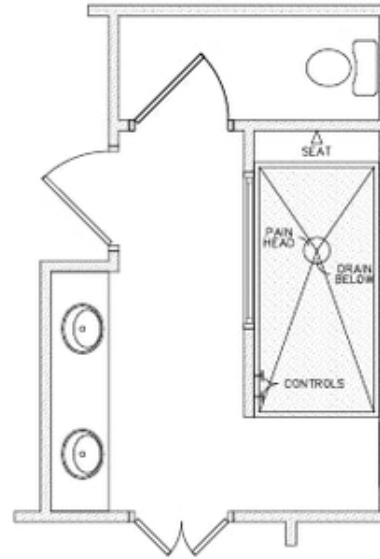
Elevation A

**Want to Know More
About This Home?**

CONTACT OUR COMMUNITY SALES MANAGER
Call Us @ 470.462.9178



OPT Media Room ilo Loft



OPT Owner's Walk-in Shower
ilo Tub & Shower

OPTIONS

**Want to Know More
About This Home?**

CONTACT OUR COMMUNITY SALES MANAGER
Call Us @ 470.462.9178