




PRICED FROM  
**\$749,900**

 2,830 Sq Ft

 3 Beds

 3.5 Baths

 2 Car Garage

 3.0 Story

- Owner's on Main
- U-Shaped Switch Back Stair Case with Vertical 2-Story Open Middle
- Open Main Level - View from the Kitchen to the Dining Room to the Family Room
- Ample Windows for Plenty of Natural Light
- Oversized Kitchen Island
- Covered Deck with access from the Family room and the Owner's Suite
- Study/Formal Dining Room off the Foyer
- Owner's Suite on the Main Level

[Read More Online](#)

## Available Elevations

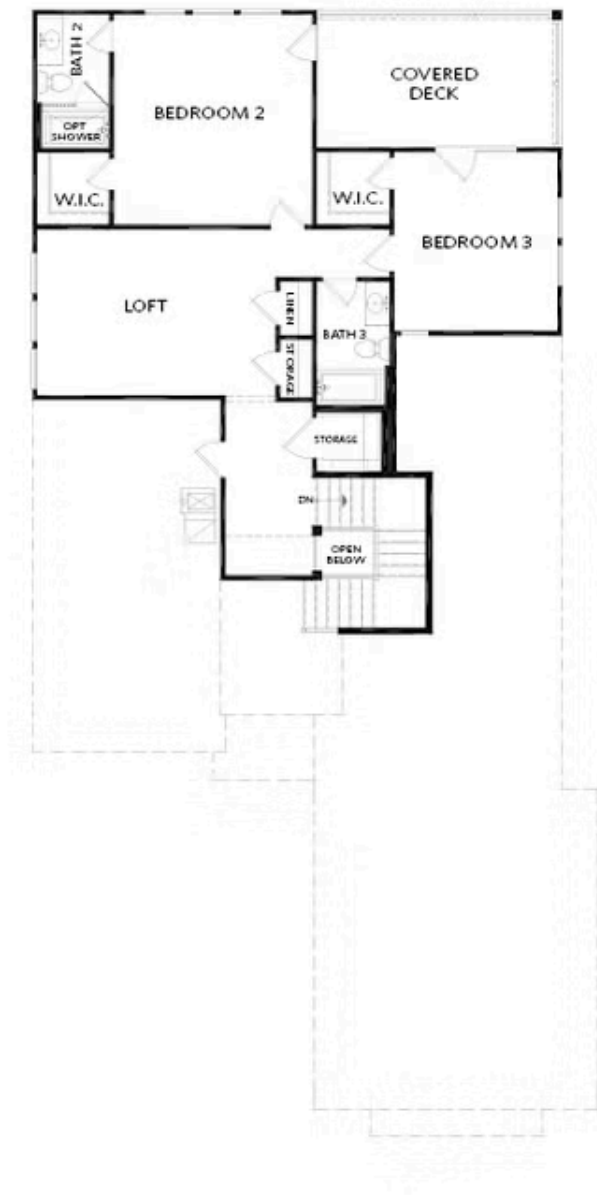




Elevation A

Want to Know More  
About This Home?

CONTACT OUR COMMUNITY SALES MANAGER  
Call Us @ 470.462.9178



Elevation A

Want to Know More  
About This Home?

CONTACT OUR COMMUNITY SALES MANAGER  
Call Us @ 470.462.9178

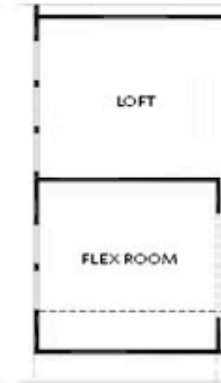


OPT Owner's  
Wet Bath



OPT Slider Door  
at Covered Deck

FIRST FLOOR



OPT Flex Room

SECOND FLOOR

Want to Know More  
About This Home?

CONTACT OUR COMMUNITY SALES MANAGER  
Call Us @ 470.462.9178