



PRICED FROM
\$797,900

 2,848 Sq Ft

 4 Beds

 4.5 Baths

 2 Car Garage

 2.0 Story

- Open Main Level - View from the Kitchen to the Dining Room to the Family Room
- Ample Windows for Plenty of Natural Light
- Decorative Beams in the Family Room
- Large Kitchen Island
- Covered Deck with access from the Family room and the Owner's Suite
- Guest Suite on with Full Bathroom on the Main Level
- Owner's Suite on the Main Level

• Owner's Bath Features Dual Vanity, Large Shower, Massive W/C and Water Closet

[Read More Online](#)

Available Elevations

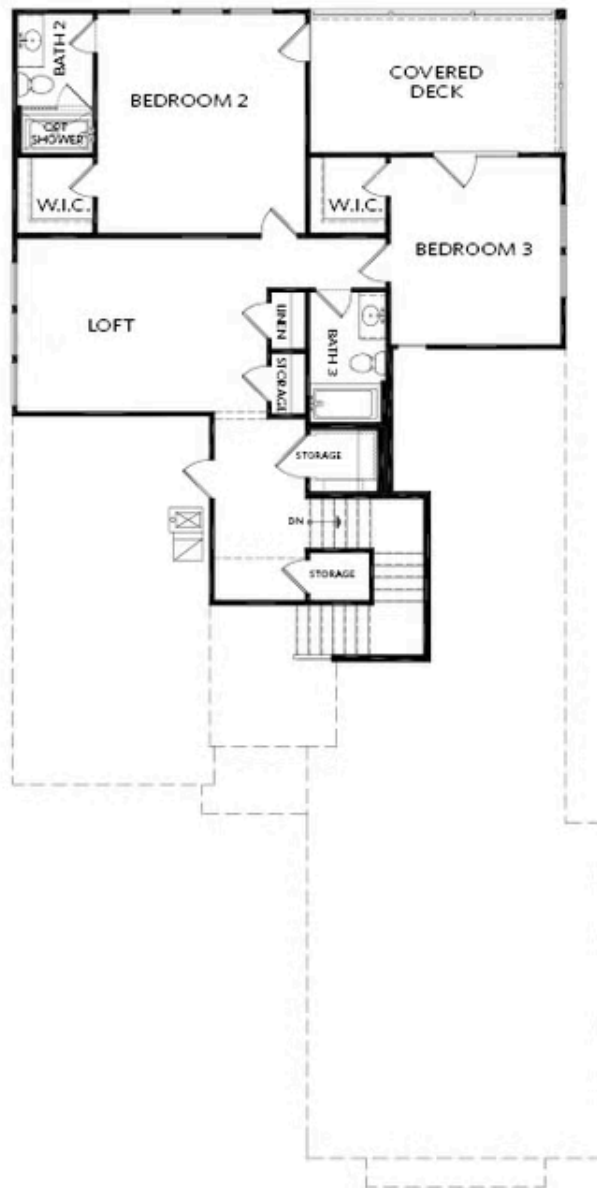




Elevation A

Want to Know More
About This Home?

CONTACT OUR COMMUNITY SALES MANAGER
Call Us @ 470.462.9178



Elevation A

Want to Know More
About This Home?

CONTACT OUR COMMUNITY SALES MANAGER
Call Us @ 470.462.9178

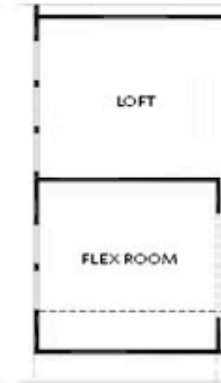


OPT Owner's
Wet Bath



OPT Slider Door
at Covered Deck

FIRST FLOOR



OPT Flex Room

SECOND FLOOR

Want to Know More
About This Home?

CONTACT OUR COMMUNITY SALES MANAGER
Call Us @ 470.462.9178