



PRICED AT
\$678,900

 2573 Sq Ft

 4 Beds

 3.5 Baths

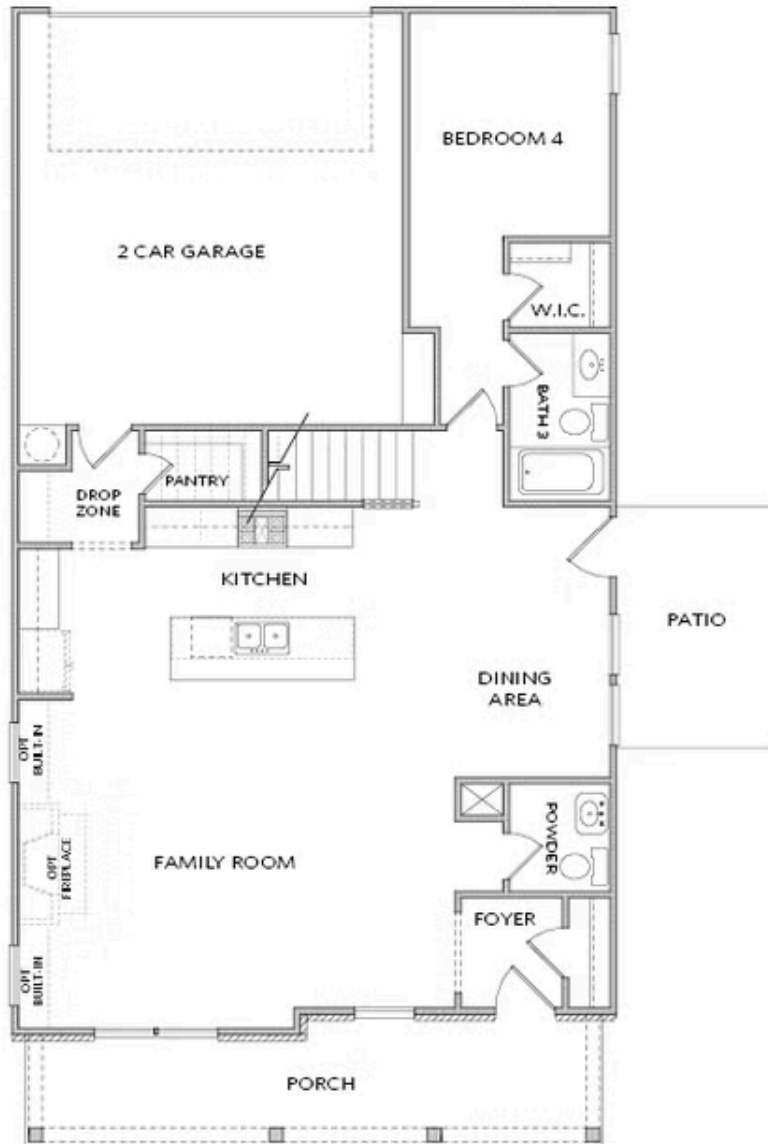
 2 Car Garage

 2.0 Story

~~~ Elevate Your Life here at Waterhaven ~~~ NEWLY RELEASED VINTAGE PLANS for you to select from and build from the ground up designing your home just as you dreamed. This Osborne layout has a Private Foyer upon entering and the open concept floorplan allows for all style furniture to fit whether you have a traditional vibe or are a more modern decor lover. Bedroom on Main allows for family and friends to stay over having their own personal space to rest. Select all the design finishes from exterior to interior in any colour palette you desire. Fenced in side yard with patio to catch some rays or enjoy your morning coffee. Upstairs is the large Owner's Suite where you can relax and recharge from the day. Soak in your Owner's Tub and finish the book you've heard so much about. HUGE Walk-In-Closet has 2 windows letting in lots of natural light so getting ready for the day is a little more enjoyable. Both Secondary Bedrooms in the rear of the home too have walk-in closet sharing a Jack-&-Jill Bathroom. Open Loft at the top of the stairs where a lounge chair or decorative area adds a wow factor. Added ...

**Want to Know More  
About This Home?**

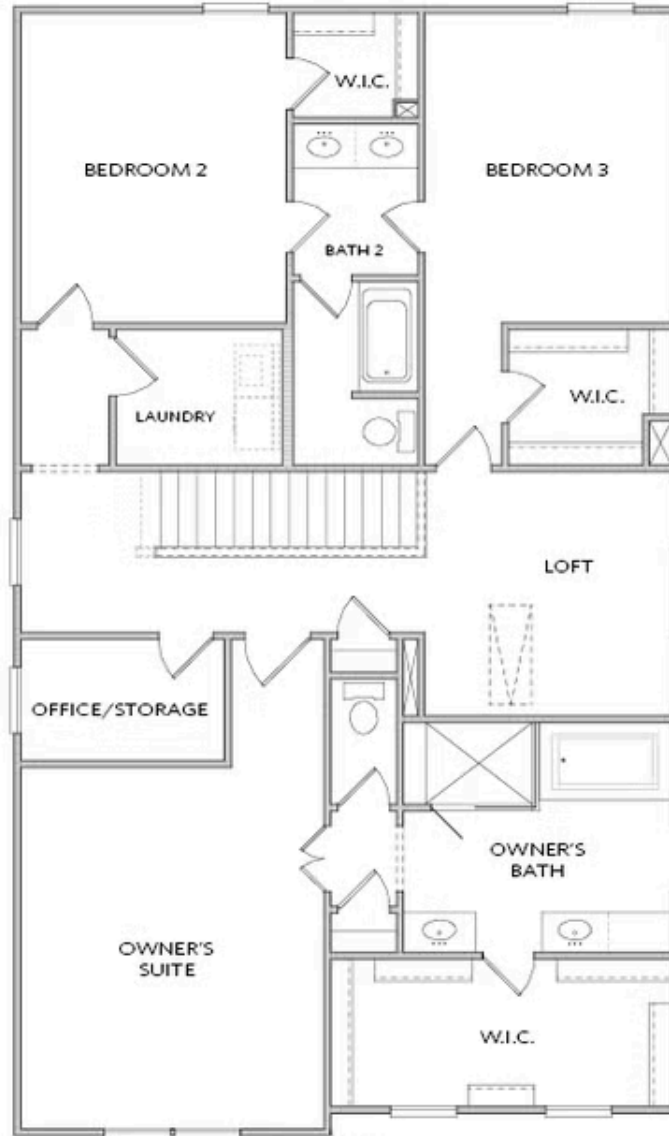
CONTACT OUR COMMUNITY SALES MANAGER  
Call Us @ 678.424.6275



Elevation A

Want to Know More  
About This Home?

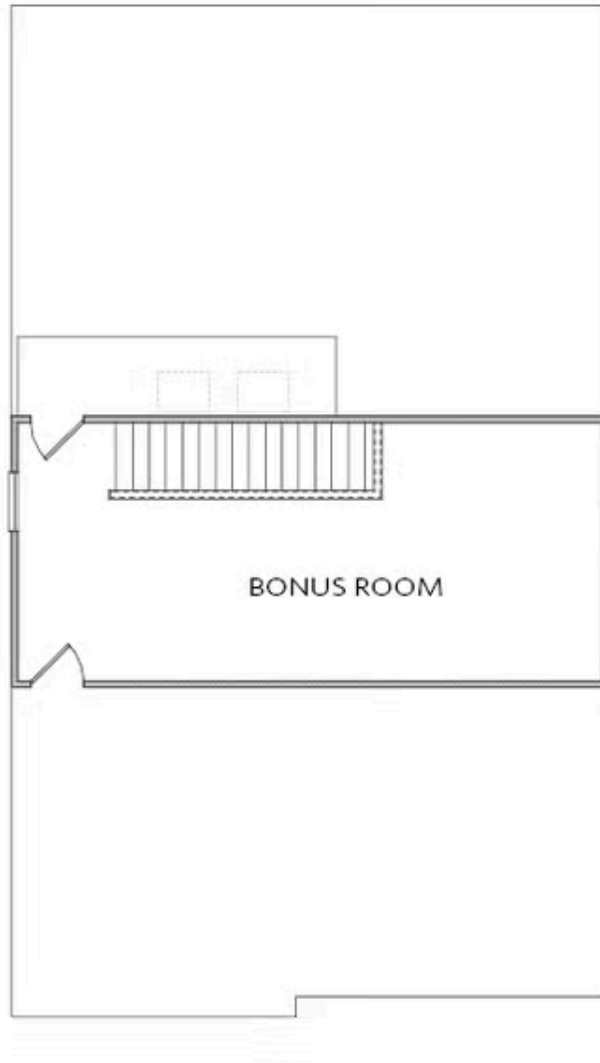
CONTACT OUR COMMUNITY SALES MANAGER  
Call Us @ 678.424.6275



Elevation A

Want to Know More  
About This Home?

CONTACT OUR COMMUNITY SALES MANAGER  
Call Us @ 678.424.6275



OPT THIRD FLOOR

Want to Know More  
About This Home?

CONTACT OUR COMMUNITY SALES MANAGER  
Call Us @ 678.424.6275



OPT 3rd Car Garage  
ilo Bedroom 4 & Bath 3



OPT Bedroom 5 w. Bath 4  
ilo Bonus Room on OPT Third Floor

Want to Know More  
About This Home?

CONTACT OUR COMMUNITY SALES MANAGER  
Call Us @ 678.424.6275