



PRICED AT
\$636,000

 2382 Sq Ft

 4 Beds

 3.5 Baths

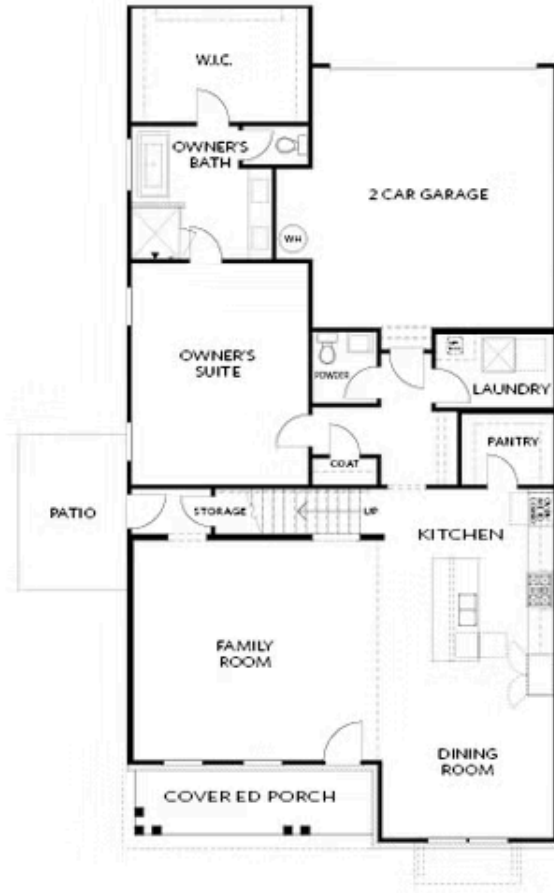
 2 Car Garage

 2.0 Story

Elevate Your Life at Waterhaven in Cumming - by The Providence Group! - "The Hampton II " is a TO BE Built home, Master on Main - at Waterhaven! With a TO BE Built home, you still have time to visit our Design Studio and make your OWN interior design selections to match your unique style - For a limited time only! This home will be 2382 sq.ft., Master on Main with luxury walk in shower with drying area - hand held and rain head - tons of tile from floor to ceiling, separate undermount sinks, framed mirrors, quartz countertops and walk in closet! Everything on the main floor is what your looking for - family room - with fireplace, covered front porch for cute chairs and flowers, open dining room concept, kitchen, walk in pantry, laundry room, coat closet and powder room. Remember you can still choose your interior design selections to make the home uniquely you. Two car garage and outdoor patio round out this amazing and perfect main floor. As you go upstairs on your beautiful oak treads, you will surprised to find three more bedrooms and two full bathrooms. Two of the bedrooms share access to ...

**Want to Know More
About This Home?**

CONTACT OUR COMMUNITY SALES MANAGER
Call Us @ 678.424.6275



FIRST FLOOR

Elevation B

Want to Know More
About This Home?

CONTACT OUR COMMUNITY SALES MANAGER
Call Us @ 678.424.6275



SECOND FLOOR

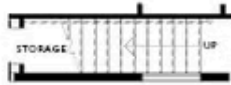
Elevation B

Want to Know More
About This Home?

CONTACT OUR COMMUNITY SALES MANAGER
Call Us @ 678.424.6275



OPT Walk-In Shower



OPT Open Rail



OPT Open Rail



OPT Side Windows



OPT Lenier Fireplace



OPT Fireplace



OPT BDR 4 ilo Loft

FIRST FLOOR

SECOND FLOOR

Elevation B

Want to Know More
 About This Home?

CONTACT OUR COMMUNITY SALES MANAGER
 Call Us @ 678.424.6275