



PRICED AT
\$703,400

 2581 Sq Ft

 4 Beds

 2.0 Baths

 2 Car Garage

 2.0 Story

Elevate your life at WATERHAVEN! TO BE BUILT ~~ The Kincaid floorplan greets with a large covered front porch entry into a lovely foyer area with hard surface floors leading to an open floorplan w/10' ceilings. A gourmet kitchen awaits & features stainless steel appliances, 42" upper cabinets w/soft close doors & drawers, under cabinet lighting & stunning quartz countertops. A large island overlooks the family & dining rooms. A covered patio extends your living space. There is bedroom/bath on the main for a private guest retreat. As you head upstairs and reach the top, you find a generous loft area for a home office or kids play area. A spacious primary suite is at the rear of the home & has a large WIC & a private bath with his/hers vanities & separate tile shower. A 2nd covered patio is off the primary bedroom to allow you to open the doors for a breath of fresh air. 2 secondary bedrooms are down the hallway & share a Jack & Jill bath. Since this is a To Be Built, you have the option to add the 3rd floor with a 4th bedroom/bath and tons of attic space. You will also ...

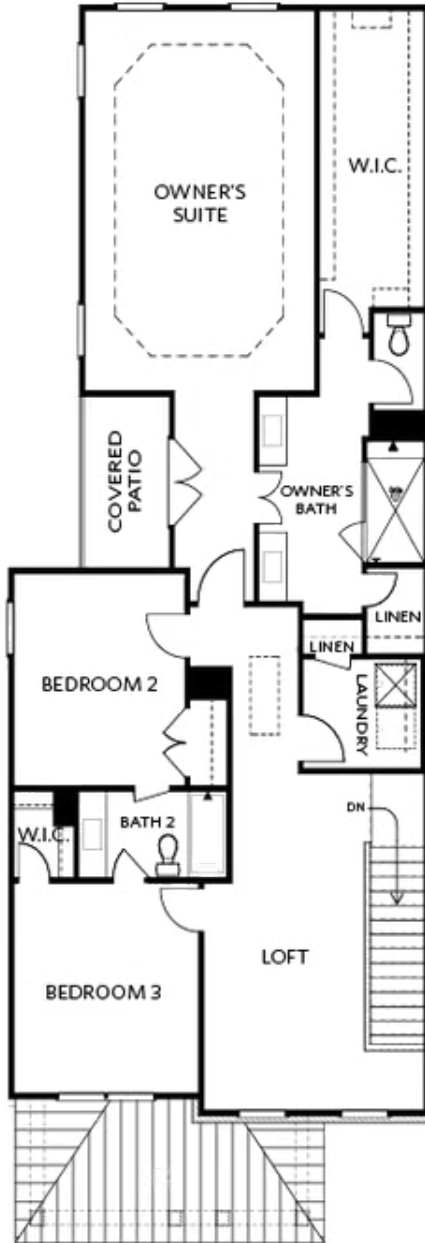
**Want to Know More
About This Home?**

CONTACT OUR COMMUNITY SALES MANAGER
Call Us @ 678.424.6275



Want to Know More
About This Home?

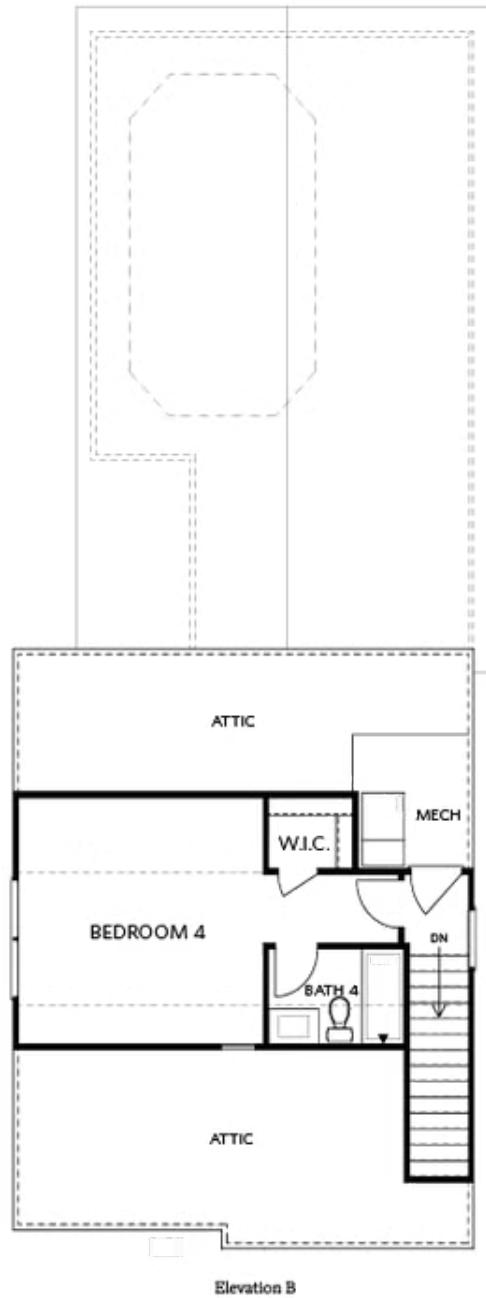
CONTACT OUR COMMUNITY SALES MANAGER
Call Us @ 678.424.6275



Elevation B

Want to Know More
About This Home?

CONTACT OUR COMMUNITY SALES MANAGER
Call Us @ 678.424.6275



Want to Know More
About This Home?

CONTACT OUR COMMUNITY SALES MANAGER
Call Us @ 678.424.6275



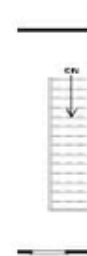
OPT Left Side Window



OPT Shower @Bath 3



OPT Left Side Window



OPT Open Rail



OPT Fireplace



OPT Closet



OPT Walk-Thru Shower



OPT Tub & Shower



OPT Linear Fireplace

FIRST FLOOR

SECOND FLOOR

Want to Know More
 About This Home?

CONTACT OUR COMMUNITY SALES MANAGER
 Call Us @ 678.424.6275