








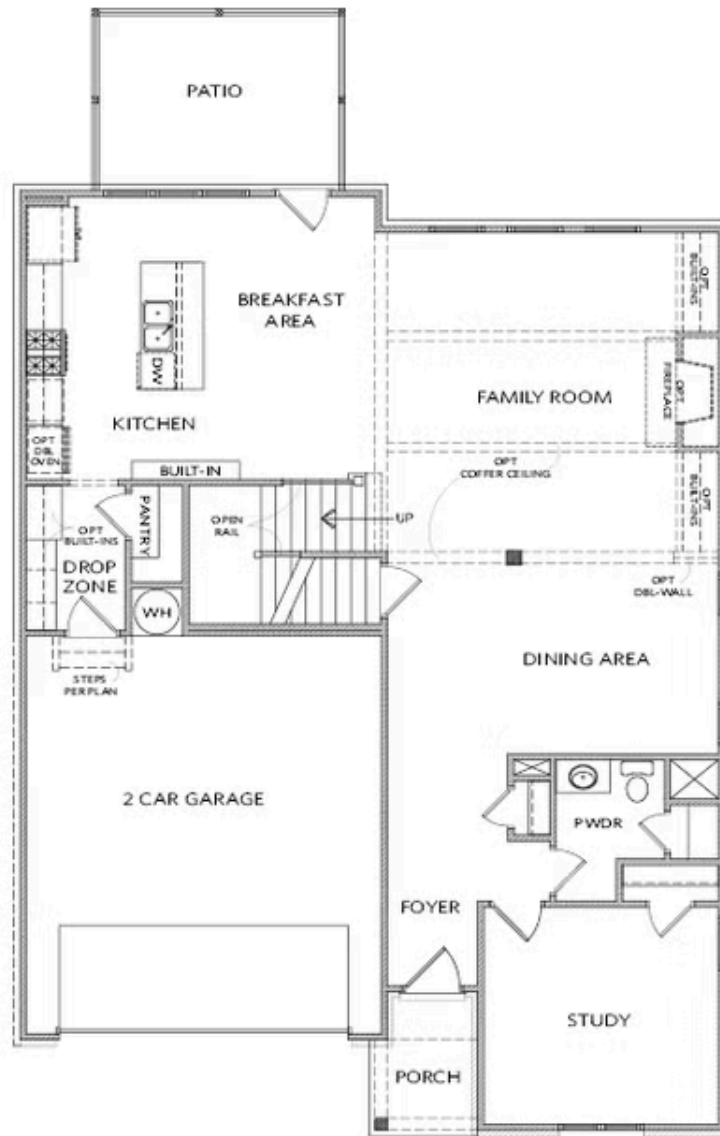
PRICED AT  
**\$911,190**

-  3431 Sq Ft
-  4 Beds
-  3.0 Baths
-  2 Car Garage
-  2.0 Story

~~~ELEVATE YOUR SAVINGS!~~~ Enjoy a \$10,000 promotion toward closing costs or appliance upgrades when you use a TPG Preferred Lender. Welcome to Waterhaven, a brand-new community by The Providence Group, ideally located in Cumming just steps from the shores of Lake Lanier! Introducing the Mansfield "D" on a Full Unfinished Basement a beautifully designed home that combines luxury, comfort, and thoughtful functionality. Offering 4 bedrooms, 3 baths, and over 3,000 square feet, this plan provides generous living space perfect for daily living and entertainment. From the charming front porch, you're welcomed into a bright entryway that leads to a main-level guest suite with a full bath, ideal for overnight visitors or those who prefer first-floor living. The main living area is both elegant and open, featuring a dedicated dining room that flows seamlessly into the family room and sunroom, highlighted by abundant natural light and a cozy gas fireplace with Sanya White Quartzite Floor to Ceiling surround and boxed stained mantel. The chef-inspired kitchen impresses with a large island, GE Profile stainless steel appliances, Quartz Calacatta Goa counter tops with painted Vanilla cabinetry and a walk-in pantry. Step outside onto the deck just off the kitchen perfect for outdoor dining ...

**Want to Know More  
About This Home?**

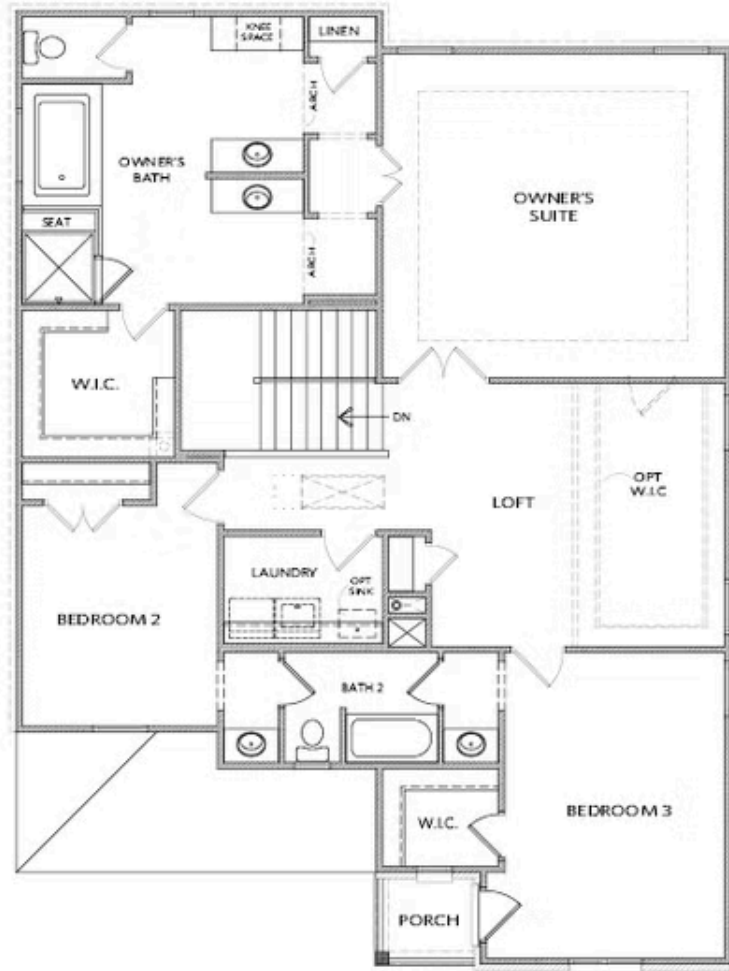
CONTACT OUR COMMUNITY SALES MANAGER  
Call Us @ 678.424.6275



Elevation A

Want to Know More  
About This Home?

CONTACT OUR COMMUNITY SALES MANAGER  
Call Us @ 678.424.6275



Elevation A

Want to Know More  
About This Home?

CONTACT OUR COMMUNITY SALES MANAGER  
Call Us @ 678.424.6275

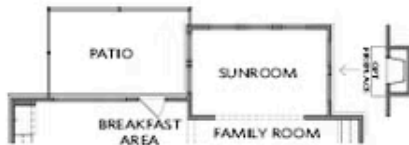


OPT Owner's Walk-In Shower



OPT Owner's Sitting Room

## SECOND FLOOR



OPT Sunroom, OPT Fireplace on Sunroom



OPT Bedroom 4 & Bath 3  
ilo Study & Powder Room



OPT Division Wall for Dining

## FIRST FLOOR

Want to Know More  
About This Home?

CONTACT OUR COMMUNITY SALES MANAGER  
Call Us @ 678.424.6275