



PRICED AT
\$887,835

 2352 Sq Ft

 5 Beds

 4.0 Baths

 2 Car Garage

 2.0 Story

WATERHAVEN GRAND OPENING WEEKEND! \$10,000 promotion can be used toward closing costs or appliance options when you use a TPG Preferred Lender. Welcome to Waterhaven by The Providence Group centrally located between Cumming City Center and the shores of Lake Lanier! Step inside The Wesley floorplan featuring 5BR/4BA on UNFINISHED BASEMENT. Enter the home from the covered front porch into welcoming foyer with hard surface floors that flow throughout the main level including the main floor BR. The main floor Bedroom & Bath is perfect for guests or an in-law suite. The open floorplan has a large family room and a cozy fireplace w/stacked quartzite from floor to ceiling, dining area and stunning kitchen. The design selections for this home are warm and inviting. Painted Oat stacked cabinets, picket style neutral backsplash, Britannica Gold Cambria countertops, Farm Sink and Gold faucet and hardware make this kitchen a show stopper! A door off the kitchen leads to your covered, rear deck for an outdoor entertaining space. The upper floor is the host to the primary suite, 3 secondary bedrooms and the laundry room. Enough room for everyone! The gorgeous design selections continue to the primary bedroom and spa like bath with ...

**Want to Know More
About This Home?**

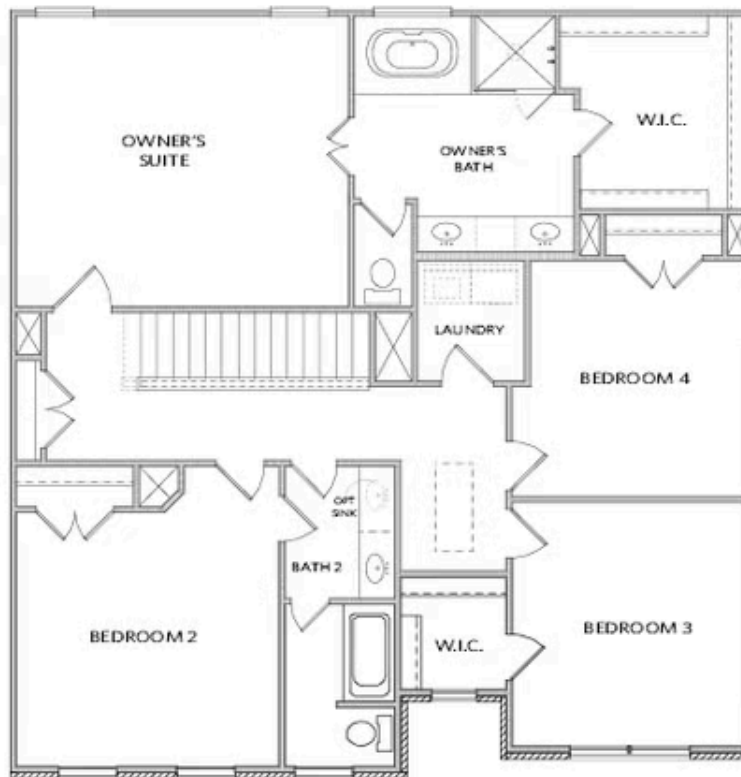
CONTACT OUR COMMUNITY SALES MANAGER
Call Us @ 678.424.6275



Elevations A & B

Want to Know More
About This Home?

CONTACT OUR COMMUNITY SALES MANAGER
Call Us @ 678.424.6275



Elevations A & B

Want to Know More
About This Home?

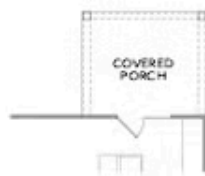
CONTACT OUR COMMUNITY SALES MANAGER
Call Us @ 678.424.6275



Layout When on a Basement



OPT Guest Suite w. Full Bath
ilo Living RM, Powder RM & Home Office



OPT Covered Porch



OPT Sunroom w. Deck/Patio

Want to Know More
About This Home?

CONTACT OUR COMMUNITY SALES MANAGER
Call Us @ 678.424.6275



OPT Home Office 2 w. Larger W.I.C. &
Larger Laundry into Bedroom 4



OPT Owner's Walk-In Shower



OPT Bath 3 at Bedroom 3
*ONLY Available on Elevation B

Want to Know More
About This Home?

CONTACT OUR COMMUNITY SALES MANAGER
Call Us @ 678.424.6275