



PRICED AT
\$889,455

 2352 Sq Ft

 5 Beds

 4.0 Baths

 2 Car Garage

 2.0 Story

~~~ELEVATE YOUR EVERY DAY~~~ with a FREE PARTIALLY FINISHED Basement. Only available on the next 2 homes under contract. Must use Preferred Lender(s). Limited Opportunity. Terms and Conditions Apply. Welcome to Waterhaven by The Providence Group centrally located between Cumming City Center and the shores of Lake Lanier! Step inside this MOVE IN READY Wesley floorplan featuring 5BR/4BA on BASEMENT. Enter the home from the covered front porch into welcoming foyer with hard surface floors that flow throughout the main level including the main floor BR. The main floor Bedroom & full Bath is perfect for guests or an in-law suite. The open floorplan has a large family room and a cozy fireplace w/stacked quartzite from floor to ceiling, dining area and stunning kitchen. The design selections for this home are warm and inviting. Painted Oat stacked cabinets, picket style neutral backsplash, Britannica Gold Cambria countertops, Farm Sink and Gold faucet and hardware make this kitchen a showstopper! Blinds are included throughout the home. A door off the kitchen leads to your covered, rear deck for an outdoor entertaining space. The upper floor is the host to the primary suite, 3 secondary bedrooms and the laundry room. Enough room for ...

**Want to Know More  
About This Home?**

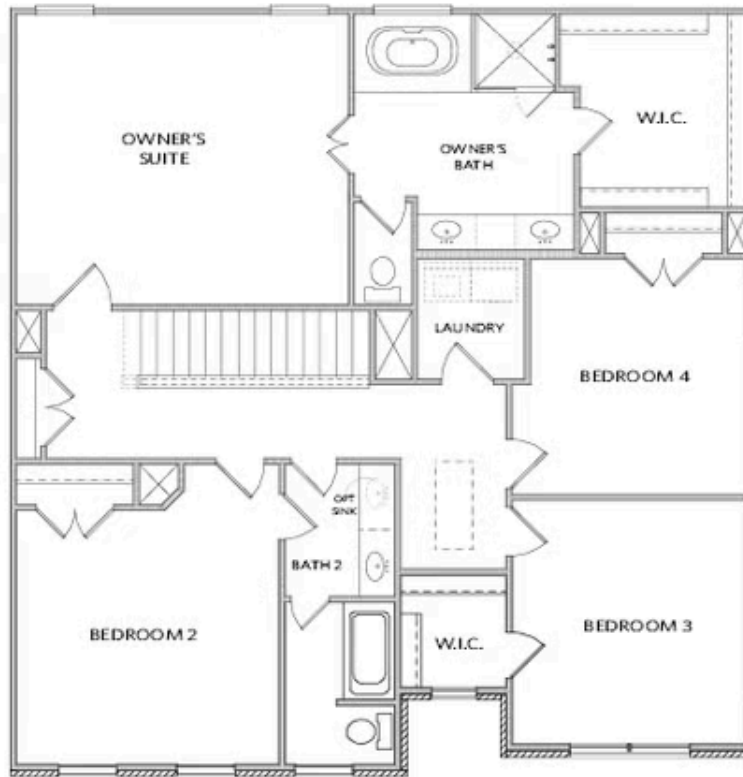
CONTACT OUR COMMUNITY SALES MANAGER  
Call Us @ 678.424.6275



Elevations A & B

Want to Know More  
About This Home?

CONTACT OUR COMMUNITY SALES MANAGER  
Call Us @ 678.424.6275



Elevations A & B

Want to Know More  
About This Home?

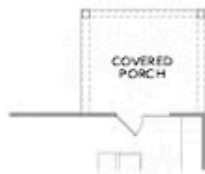
CONTACT OUR COMMUNITY SALES MANAGER  
Call Us @ 678.424.6275



Layout When on a Basement



OPT Guest Suite w. Full Bath  
 into Living RM, Powder RM & Home Office



OPT Covered Porch



OPT Sunroom w. Deck/Patio

Want to Know More  
 About This Home?

CONTACT OUR COMMUNITY SALES MANAGER  
 Call Us @ 678.424.6275



OPT Home Office 2 w. Larger W.I.C. &  
 Larger Laundry ilo Bedroom 4



OPT Owner's Walk-In Shower



OPT Bath 3 at Bedroom 3  
 \*ONLY Available on Elevation B

Want to Know More  
 About This Home?

CONTACT OUR COMMUNITY SALES MANAGER  
 Call Us @ 678.424.6275