




PRICED AT
\$946,785

 2926 Sq Ft

 4 Beds

 4.0 Baths

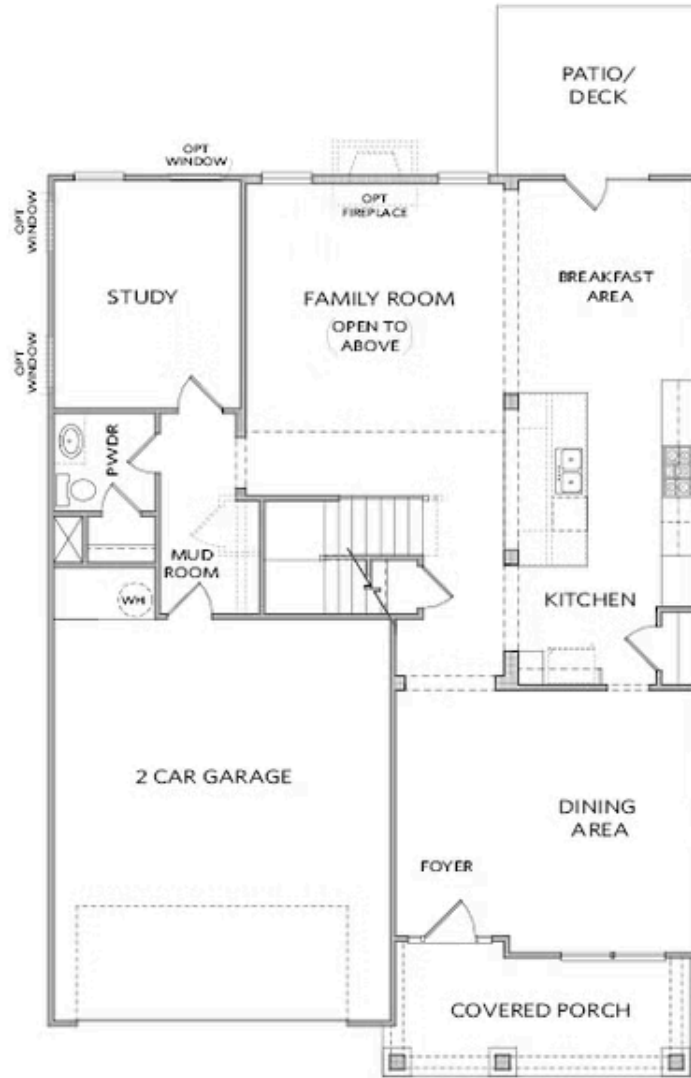
 2 Car Garage

 2.0 Story

WATERHAVEN GRAND OPENING! \$10,000 promotion can be used toward closing costs or appliance options when you use a TPG Preferred Lender. Welcome to Waterhaven by The Providence Group centrally located between Cumming City Center and the shores of Lake Lanier! Homesite 128 features the Calhoun with a charming brick front elevation on a full UNFINISHED BASEMENT! Step inside a welcoming foyer with 10' ceilings & hard surface flooring that leads to the open kitchen, breakfast & family room. The stunning kitchen will stacked white cabinets at the perimeter and natural 2x5 picket style backsplash. The island is a natural stain with a single bowl stainless sink. Creamy quartz countertops and stainless GE Profile appliances finish out the space. Steps away are a breakfast room on one side and a separate dining on the other. The large island overlooks the 2 story family room where the white painted brick fireplace is the focal point giving a warm & cozy feel. Tucked away on the main floor is a guest retreat with full bathroom. Upstairs you will find an expansive primary bedroom featuring a spa like bath with dual vanity, frameless tile shower & large soaking tub. The real surprise is ...

**Want to Know More
About This Home?**

CONTACT OUR COMMUNITY SALES MANAGER
Call Us @ 678.424.6275



Elevation A

Want to Know More
About This Home?

CONTACT OUR COMMUNITY SALES MANAGER
Call Us @ 678.424.6275



Elevation A

Want to Know More
About This Home?

CONTACT OUR COMMUNITY SALES MANAGER
Call Us @ 678.424.6275



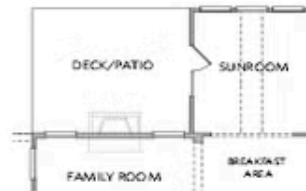
OPT Covered Deck/Patio



OPT Coffered Ceilings
With OPT Media Room -or- Bedroom 5 Above



OPT Bedroom 4 w. Full Bath 4
llo Study & Powder Room



OPT Sunroom

Want to Know More
About This Home?

CONTACT OUR COMMUNITY SALES MANAGER
Call Us @ 678.424.6275



OPT Media Room ilo of
Two-Story Family Room



OPT Bedroom 5 ilo of
Two-Story Family Room



OPT Bedroom 5 w. Bath 5
ilo of Two-Story Family Room



OPT Bath 3 at Bedroom 2



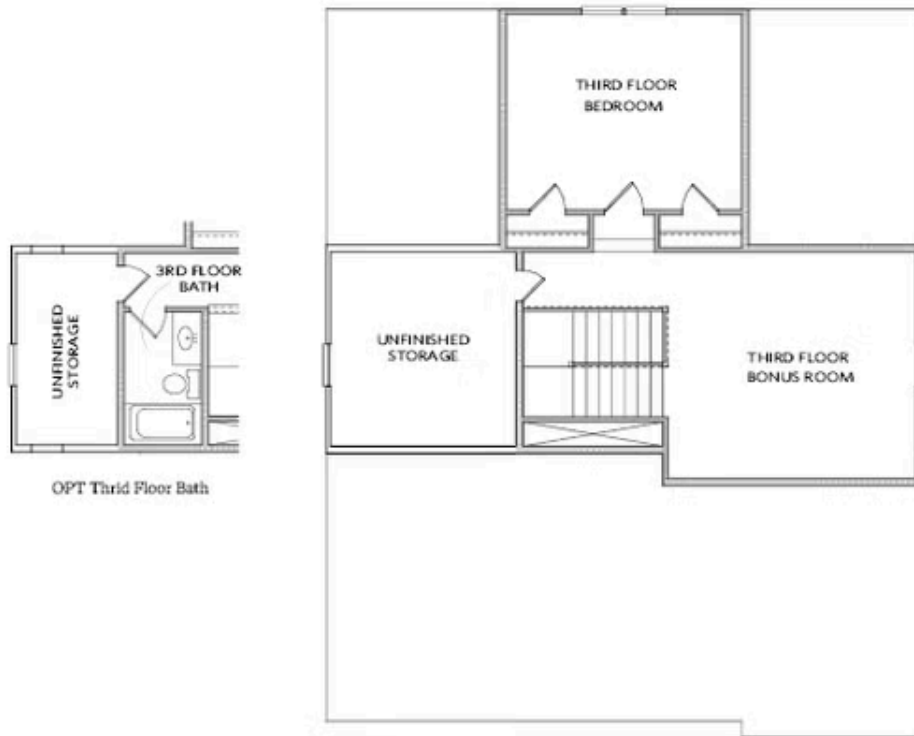
OPT Owner's Walk-In Shower



OPT En-Law Suite at Bedroom 3

Want to Know More
About This Home?

CONTACT OUR COMMUNITY SALES MANAGER
Call Us @ 678.424.6275



OPTIONAL THRID FLOOR

*ONLY Available on a Slab Home

Want to Know More
About This Home?

CONTACT OUR COMMUNITY SALES MANAGER
Call Us @ 678.424.6275