




PRICED AT
\$946,205

 2926 Sq Ft

 4 Beds

 4.0 Baths

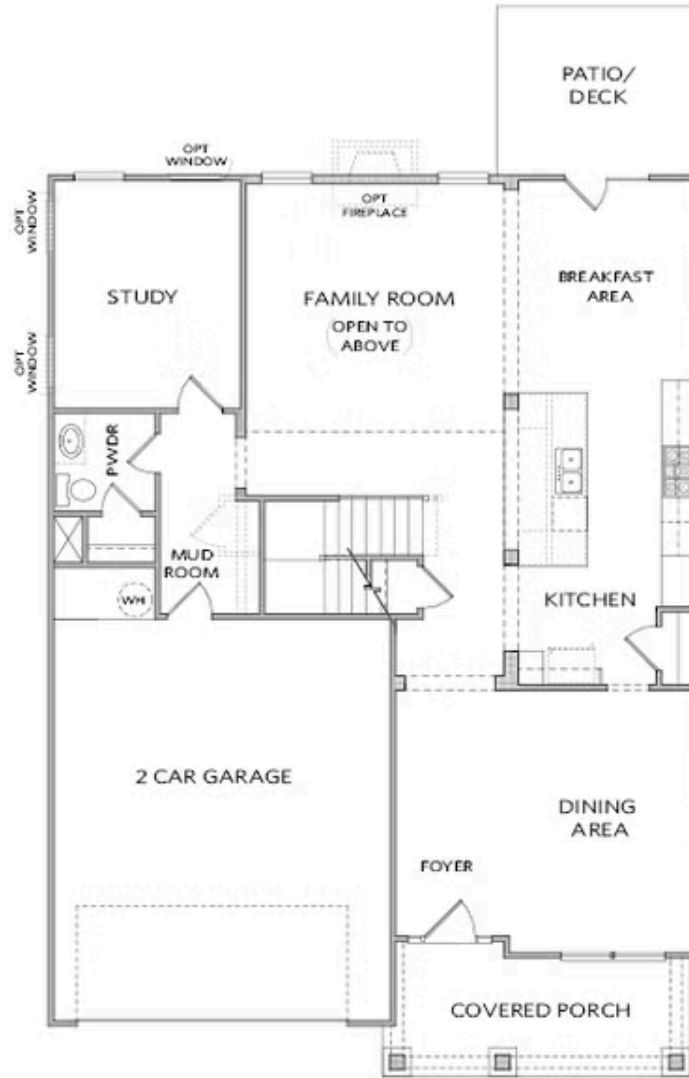
 2 Car Garage

 2.0 Story

~~~ELEVATE YOUR EVERYDAY~~~ with an UPGRADED FINISHED BASEMENT!! Only available on the next 2 homes under contract by 5/31/26. Must use Preferred Lender(s). Limited Opportunity. Terms and Conditions Apply. Welcome to Waterhaven by The Providence Group centrally located between Cumming City Center and the shores of Lake Lanier! MOVE IN READY Homesite 128 features the Calhoun with a charming brick front elevation on a full UNFINISHED BASEMENT! Step inside a welcoming foyer with 10' ceilings & hard surface flooring that leads to the open kitchen, breakfast & family room. The stunning kitchen will stacked white cabinets at the perimeter and natural 2x5 picket style backsplash. The island is a natural stain with a single bowl stainless sink. Creamy quartz countertops and stainless GE Profile appliances finish out the space. Steps away are a breakfast room on one side and a separate dining on the other. The large island overlooks the 2-story family room where the white painted brick fireplace is the focal point giving a warm & cozy feel. Tucked away on the main floor is a guest retreat with full bathroom. Upstairs you will find an expansive primary bedroom featuring a spa like bath with dual vanity, frameless tile ...

**Want to Know More  
About This Home?**

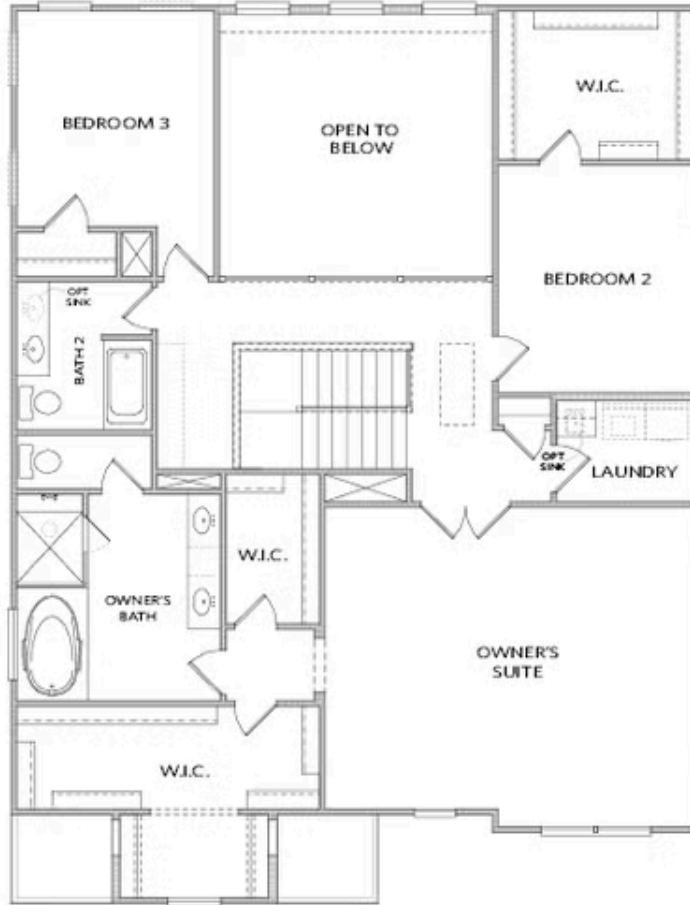
CONTACT OUR COMMUNITY SALES MANAGER  
Call Us @ 678.424.6275



Elevation A

Want to Know More  
About This Home?

CONTACT OUR COMMUNITY SALES MANAGER  
Call Us @ 678.424.6275



Elevation A

Want to Know More  
About This Home?

CONTACT OUR COMMUNITY SALES MANAGER  
Call Us @ 678.424.6275



OPT Covered Deck/Patio



OPT Coffered Ceilings  
With OPT Media Room -or- Bedroom 5 Above



OPT Bedroom 4 w. Full Bath 4  
Ilo Study & Powder Room



OPT Sunroom

Want to Know More  
About This Home?

CONTACT OUR COMMUNITY SALES MANAGER  
Call Us @ 678.424.6275



OPT Media Room ilo of  
 Two-Story Family Room



OPT Bedroom 5 ilo of  
 Two-Story Family Room



OPT Bedroom 5 w. Bath 5  
 ilo of Two-Story Family Room



OPT Bath 3 at Bedroom 2



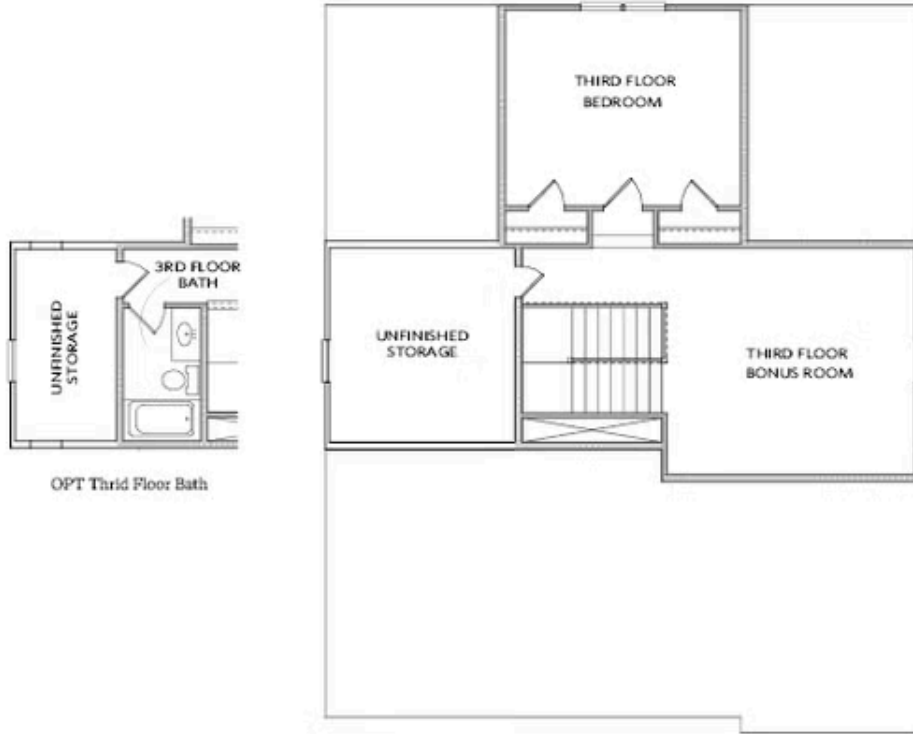
OPT Owner's Walk-In Shower



OPT En-Law Suite at Bedroom 3

Want to Know More  
 About This Home?

CONTACT OUR COMMUNITY SALES MANAGER  
 Call Us @ 678.424.6275



OPT Third Floor Bath

**OPTIONAL THRID FLOOR**

\*ONLY Available on a Slab Home

**Want to Know More  
About This Home?**

CONTACT OUR COMMUNITY SALES MANAGER  
Call Us @ 678.424.6275