








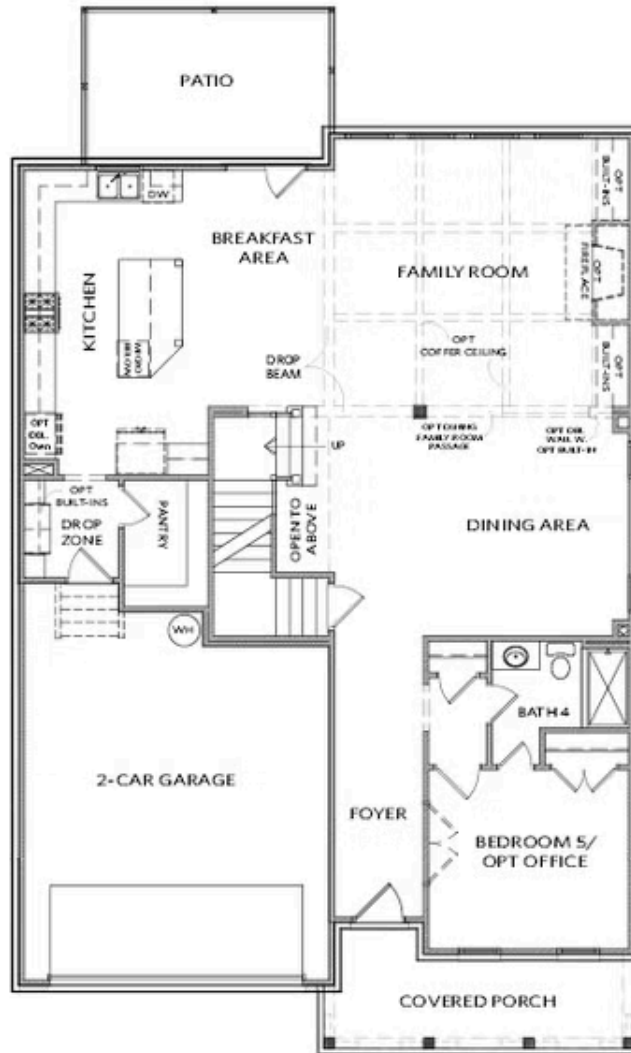
PRICED AT
\$1,013,565

-  3511 Sq Ft
-  5 Beds
-  4.0 Baths
-  2 Car Garage
-  2.0 Story

~~~ELEVATE YOUR EVERYDAY~~~ with a FREE PARTIALLY FINISHED Basement. Must use Preferred Lender(s). Limited Opportunity. Terms and Conditions Apply. Welcome to Waterhaven by The Providence Group centrally located between Cumming City Center and the shores of Lake Lanier! Experience refined living in this stunning Montgomery "A" NEW CONSTRUCTION home featuring an unfinished terrace level perfect for future customization. From the inviting front porch, step into an elegant foyer that leads to a spacious main-level bedroom or office with a full bath, offering versatility and comfort for guests or work-from-home needs. The main living area is thoughtfully designed for both everyday living and entertaining. An inviting color scheme has been selected with Vanilla cabinetry, Calacatta Miraggio Gold kitchen backsplash, single bowl stainless steel sink and gold hardware compliment this chef's kitchen. A beautifully defined dining room flows seamlessly into the open-concept kitchen and family room with gas fireplace. The entertainer's kitchen boasts an extended island, abundant cabinetry with GE Profile Appliances and a clear view into the light-filled family room an ideal layout for gatherings of any size. Step out of the kitchen onto your covered, rear deck for an outdoor entertaining space. Upstairs, the luxurious Owner's Retreat is a true ...

**Want to Know More  
About This Home?**

CONTACT OUR COMMUNITY SALES MANAGER  
Call Us @ 678.424.6275



Elevation A & B

Want to Know More  
 About This Home?

CONTACT OUR COMMUNITY SALES MANAGER  
 Call Us @ 678.424.6275



Elevation A & B

Want to Know More  
About This Home?

CONTACT OUR COMMUNITY SALES MANAGER  
Call Us @ 678.424.6275



OPT Owner's Walk-In Shower



OPT Extended Porch & Awning



OPT Covered Porch



OPT Sunroom; OPT Patio/Deck  
 OPT Fireplace on Sunroom



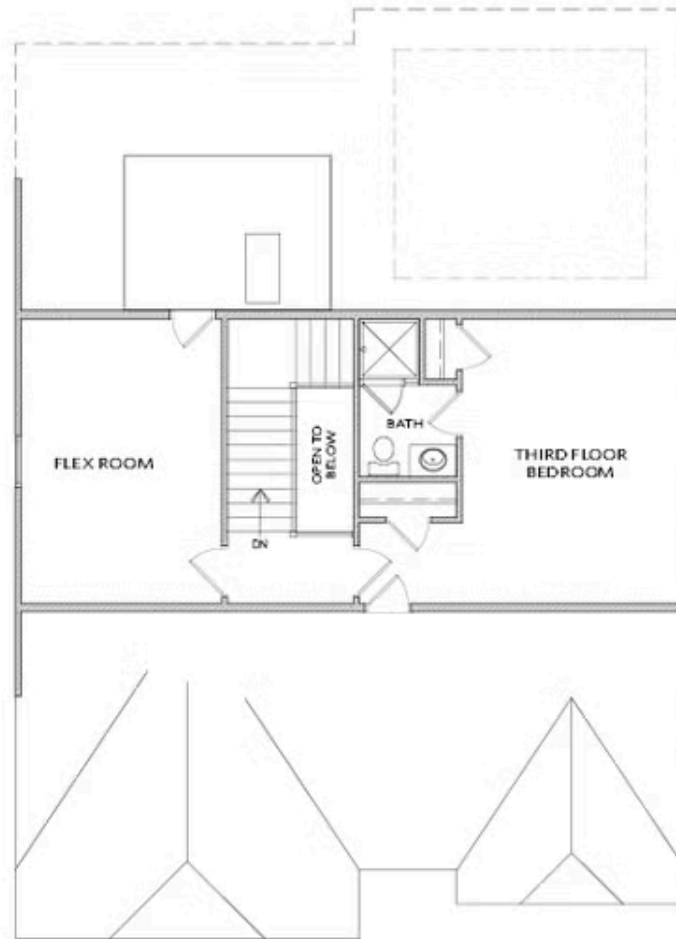
OPT Extended Kitchen



OPT Extended Kitchen w. OPT Sunroom &  
 OPT Patio/Deck

Want to Know More  
 About This Home?

CONTACT OUR COMMUNITY SALES MANAGER  
 Call Us @ 678.424.6275



\*ONLY Available on a Slab Home

Want to Know More  
About This Home?

CONTACT OUR COMMUNITY SALES MANAGER  
Call Us @ 678.424.6275