




PRICED FROM  
**\$752,400**

 2,734 - 3,333 Sq Ft

 5 - 6 Beds

 3 - 5 Baths

 2 Car Garage

 2.0 - 3.0 Story

- Expansive Two-Story Home Design with an open, light-filled main level
- Gourmet Kitchen with Center Island overlooking the dining and family rooms
- Main-Level Guest Retreat ideal for visitors or multi-generational living
- Dedicated Study offering flexible work-from-home or hobby space
- Front Porch and Rear Patio extending everyday living outdoors
- Upper-Level Owner's Suite featuring dual vanities and an oversized walk-in closet
- Upper-Level Secondary Bedrooms providing privacy and separation of space
- Laundry located on the Upper Level for added convenience

[Read More Online](#)

## Available Elevations



Elevation A



Elevation B



Elevation C



Elevation A, B, C, D

Want to Know More  
About This Home?

CONTACT OUR COMMUNITY SALES MANAGER  
Call Us @ 678.424.6275



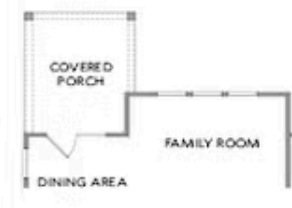
Elevation A, B, C, D

Want to Know More  
About This Home?

CONTACT OUR COMMUNITY SALES MANAGER  
Call Us @ 678.424.6275



OPT Sunroom



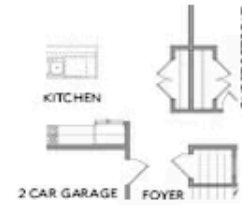
OPT Covered Porch



OPT Fireplace with OPT Built-Ins



OPT Rear Fireplace



OPT Pantry

FIRST FLOOR

Want to Know More  
 About This Home?

CONTACT OUR COMMUNITY SALES MANAGER  
 Call Us @ 678.424.6275



OPT Owner's Walk-in Shower



OPT Sitting Room ilo Bedroom 4

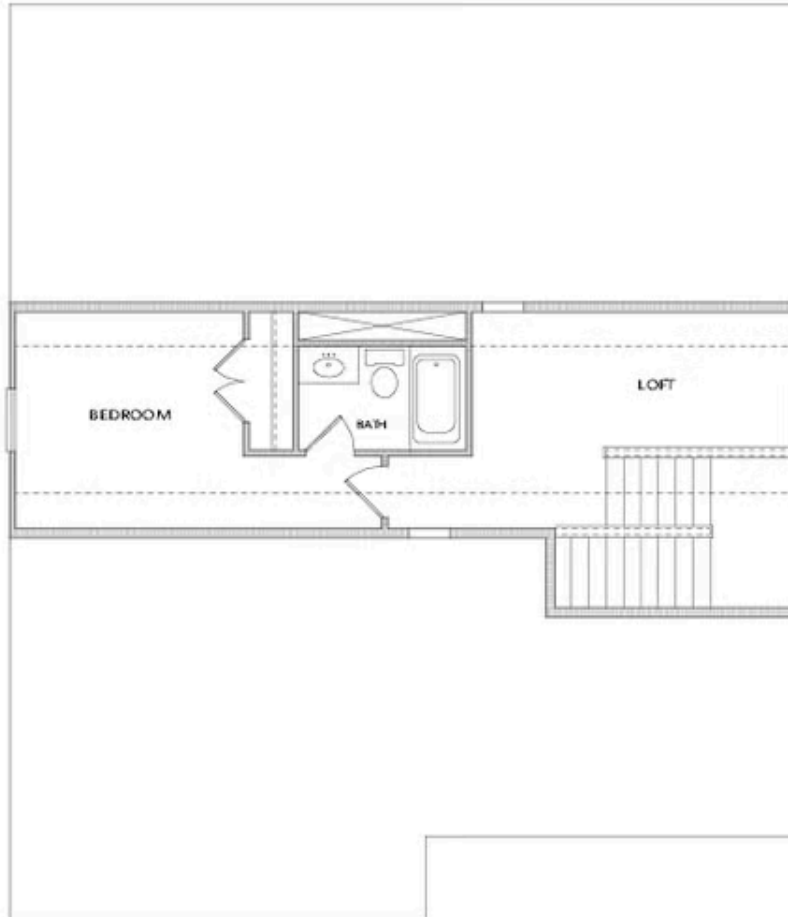


OPT Bath 3

## SECOND FLOOR

Want to Know More  
About This Home?

CONTACT OUR COMMUNITY SALES MANAGER  
Call Us @ 678.424.6275



OPT Third Floor with Bedroom, Full Bath, & Loft

Want to Know More  
About This Home?

CONTACT OUR COMMUNITY SALES MANAGER  
Call Us @ 678.424.6275