




PRICED FROM  
**\$735,900**

 2,852 - 3,996 Sq Ft

 3 - 6 Beds

 2.5 - 6 Baths

 2 Car Garage

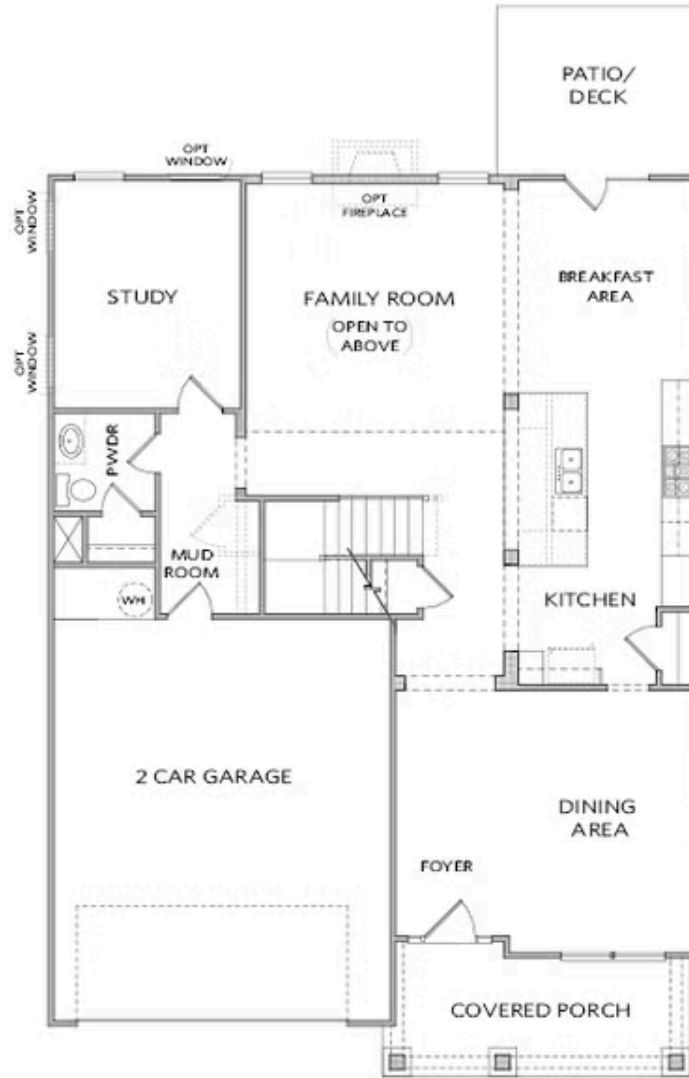
 2.0 - 3.0 Story

- Open Main Level Layout with Private Study and Formal Dining Room
- Optional Sunroom with Fireplace and Access to Deck/Patio
- Spacious Owner's Suite with Dual Walk-In Closets, Separate Tub, Shower and Dual Vanities
- Optional Third Level Retreat with Bedroom, Bonus Room and Large Storage Area
- Additional Bedroom Options To Provide Three to Six Bedrooms
- Optional Media Room On Upper Level

[Read More Online](#)

## Available Elevations

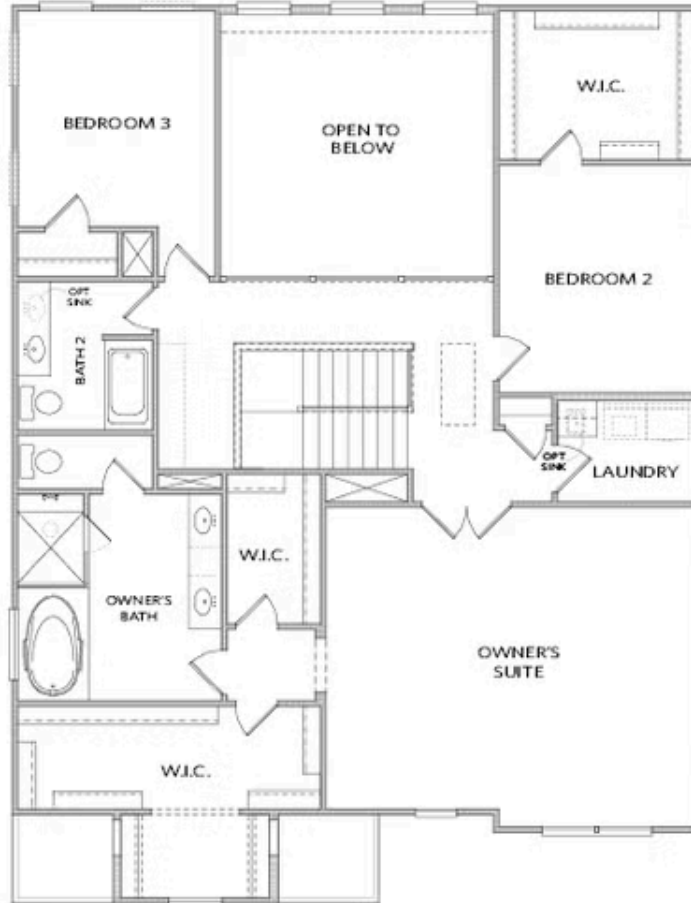




Elevation A

Want to Know More  
About This Home?

CONTACT OUR COMMUNITY SALES MANAGER  
Call Us @ 678.424.6275



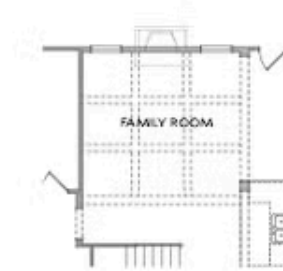
Elevation A

Want to Know More  
About This Home?

CONTACT OUR COMMUNITY SALES MANAGER  
Call Us @ 678.424.6275



OPT Covered Deck/Patio



OPT Coffered Ceilings  
With OPT Media Room -or- Bedroom 5 Above



OPT Bedroom 4 w. Full Bath 4  
No Study & Powder Room



OPT Sunroom

Want to Know More  
About This Home?

CONTACT OUR COMMUNITY SALES MANAGER  
Call Us @ 678.424.6275



OPT Media Room ilo of Two-Story Family Room



OPT Bedroom 5 ilo of Two-Story Family Room



OPT Bedroom 5 w. Bath 5 ilo of Two-Story Family Room



OPT Bath 3 at Bedroom 2



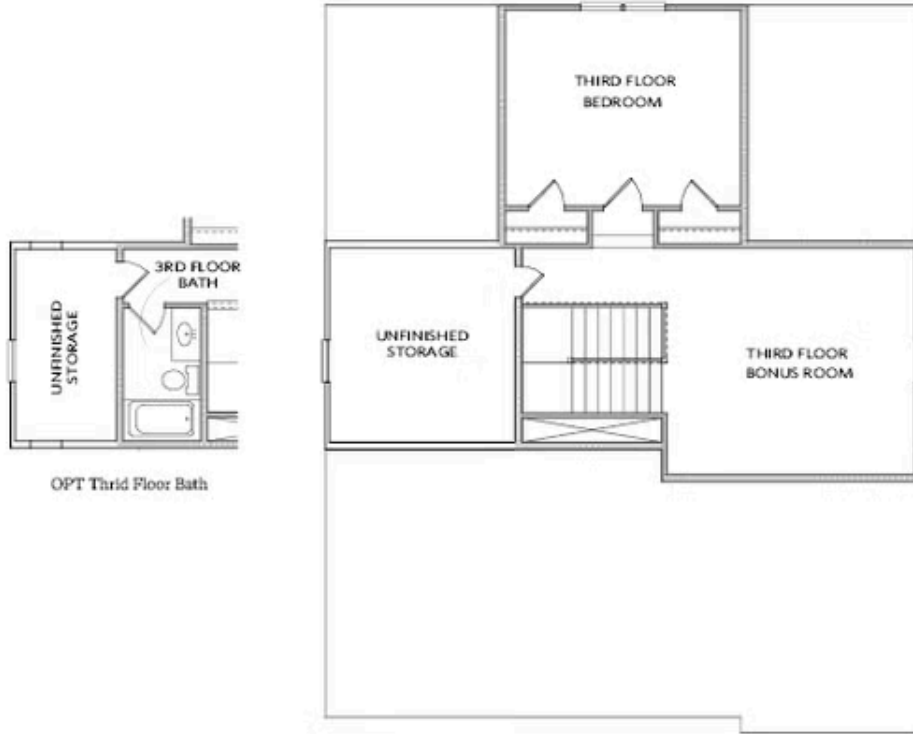
OPT Owner's Walk-In Shower



OPT En-Law Suite at Bedroom 3

Want to Know More  
 About This Home?

CONTACT OUR COMMUNITY SALES MANAGER  
 Call Us @ 678.424.6275



OPT Third Floor Bath

OPTIONAL THRID FLOOR

\*ONLY Available on a Slab Home

Want to Know More  
About This Home?

CONTACT OUR COMMUNITY SALES MANAGER  
Call Us @ 678.424.6275